

# STANDARD DRAWING

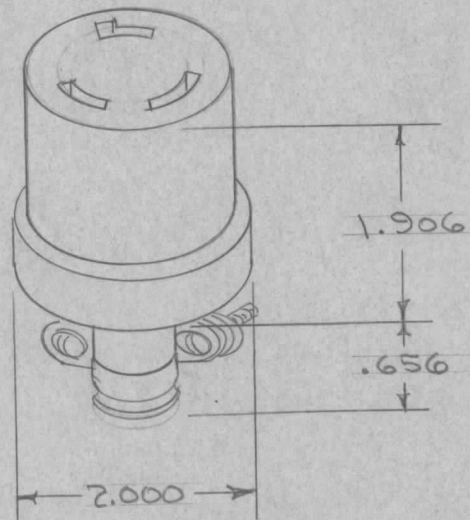
REQ. PER UNIT	USED ON			PL-134	Ø
	MODEL	ASS'Y. NO.	DATE		

TYPE	DESCRIPTION
NG	NOT GROUNDED
WG	WITH GROUND SHUNT

PL-134-NG  
 TMC NO.      TYPE

20 A. 250 V AC OR DC  
 10 A. 600 V AC

ADJUSTABLE CORD GRIP  
 CORD DIA. - .437 TO .750



(IF DESIRED WITH GROUND SHUNT)  
 ADD LETTER "G" TO CAT. NO.

REF. DWG. PL-133 & PL-135

REF: HARVEY HUBBELL INC. CAT. NO. 7313

							REQ. ITEM	PART NO.	DESCRIPTION	SYMBOL	
									THE TECHNICAL MATERIEL CORP. MAMARONECK, NEW YORK		
							STOCK SIZE		CONNECTOR, 3 WIRE		
							MATERIAL		LOCKING TYPE POLARIZED		
ISSUE	ITEM	CHANGED FROM	DATE	CH. NO.	DRAFTS	CHECKER	ENG. APP.	DRAWN	CHECKED	FINAL APPROVAL	
Ø		ORIGINAL RELEASE	9/1/65	Ø				CD 17/8/65	JAW	R.P. King 9/1/65	
TOLERANCES			SCALE:			TYPE & TEMPER		HEAT TREAT. SPEC.		FINISH & SPEC. NO.	
DEC. DIM. ±			MAXIMUM ALLOWABLE TOLERANCES HAVE BEEN DETERMINED AND ANY DEVIATIONS WILL BE CAUSE FOR REJECTION.							PL-134	
FRAC. DIM. ±			REMOVE ALL BURRS AND SHARP EDGES							Ø	
ANGULAR DIM. ±											