

IF IT IS FOUND DESIRABLE TO CHANGE ANY TOLERANCE OR OTHER DETAIL SPECIFIED ON THIS DRAWING NOTIFY THE PURCHASER PROMPTLY.

STANDARD DRAWING

PL-127 B

MAXIMUM ALLOWABLE TOLERANCES HAVE BEEN DETERMINED AND DEVIATIONS WILL BE CAUSE FOR REJECTION. REMOVE ALL BURRS AND SHARP EDGES

REQ. PER UNIT

USED ON

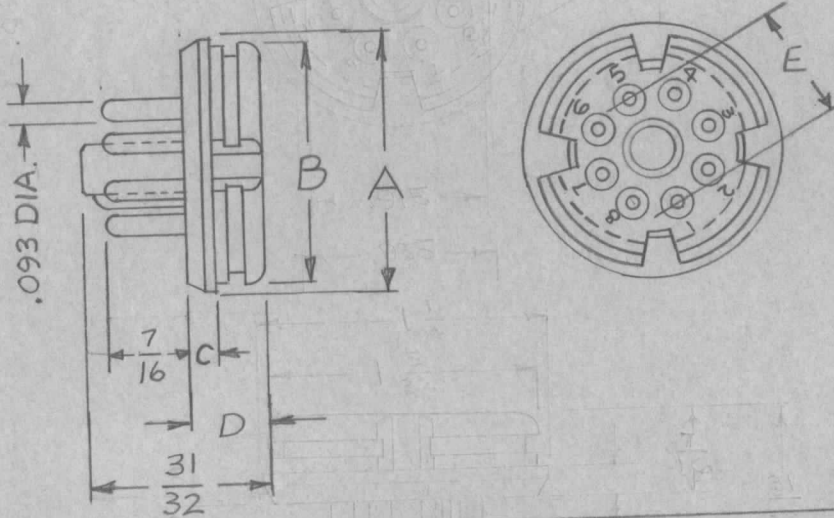
MODEL

PROJECT NO.

ASS'Y. NO.

DATE

TMC P/N	S401-71 MFG P/N	S401-76 MFG P/N	CONTACTS	VOLTAGE RATING	CUR. RATING	A	B	C	D	E
				RMS AT SEA LEVEL	RATING AMPS					
PL127	86-CP8T	16022	8 OCTAL	1250	5	1-1/4	1-5/32	.145	7/16	.687
PL127-2	86-CP11T		11	500	5	1-1/4	1-5/32	.145	7/16	.750



REQ.	ITEM	PART NO.		DESCRIPTION			SYMBOL
				THE TECHNICAL MATERIEL CORP. MAMARONECK. NEW YORK			
		STOCK SIZE		CONNECTOR, PLUG, MALE			
		MICA FILLED PHENOLIC					
		MATERIAL	WEIGHT PER PC.				
B	REV. & UPDATED	4.30.68	18896	W.S.	WV	FB	
A	REF: CLARIFIED MATERIALS CLARIFIED	4-28-66	16168	WHD	WV	QC	
ISSUE	ITEM	CHANGED FROM	DATE	CN. NO.	DRAFTS	CHECKER	ENG. APP.
TOLERANCES		SCALE					
ALL OTHERS	DEC. DIM. ± FRAC. DIM. ± ANGULAR DIM. ±	DRILL, PUNCH, COMMERCIAL STOCK SIZES AND MANUFACTURERS TOLERANCES ARE NOT INCLUDED.					
				HEAT TREAT. SPEC.		FINISH & SPEC. NO.	
				DRAWN		ELEC. DES. APP.	
				CHECKED		FINAL APPROVAL	
						PL-127 B	