

IF IT IS FOUND DESIRABLE TO CHANGE ANY TOLERANCE OR OTHER DETAIL SPECIFIED ON THIS DRAWING NOTIFY THE PURCHASER PROMPTLY.

# STANDARD DRAWING

PL-116

MAXIMUM ALLOWABLE TOLERANCES HAVE BEEN DETERMINED AND DEVIATIONS WILL BE CAUSE FOR REJECTION. REMOVE ALL BURRS AND SHARP EDGES

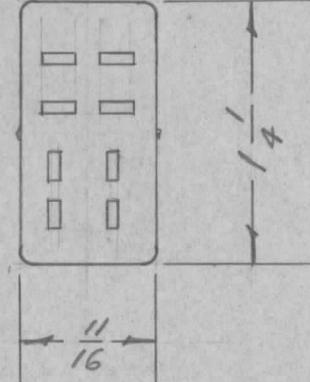
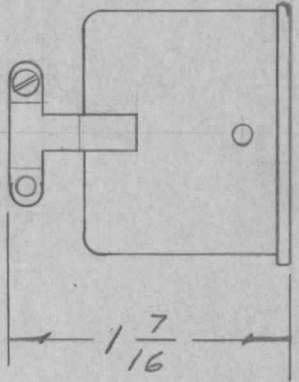
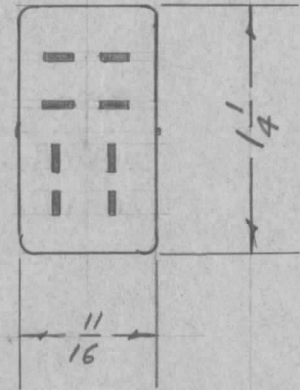
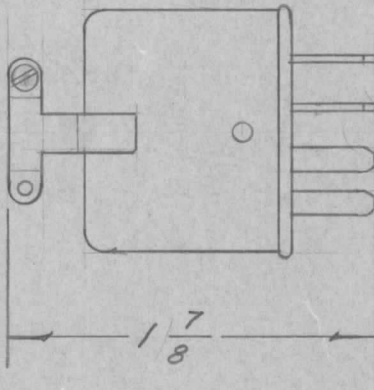
USED ON

MODEL

PROJECT NO.

ASS'Y. NO.

DATE



TMC NO.	CAT. NO.	TYPE
PL-116-1	P-308-CCT	MALE
PL-116-2	S-308-CCT	FEMALE

MATING JACK-JJ-127  
 DIM. FOR REF. ONLY  
 REF.: CINCH-JONES CAT.

REQ.	ITEM	PART NO.	DESCRIPTION	SYMBOL
		//	THE TECHNICAL MATERIEL CORP. MAMARONECK, NEW YORK	
		STOCK SIZE		
		//	CONNECTOR - 8 PRONG	
		//		
		MATERIAL		
		WEIGHT PER PC.		
		//		
		TYPE & TEMPER	16 9/14/53	A. J. J.
		//	DRAWN	ELEC. DES. APP.
		//	HEAT TREAT. SPEC.	MECH. DES. APP.
		//	CHECKED	FINAL APPROVAL
		FINISH & SPEC. NO.		PL-116

ISSUE ITEM CHANGED FROM DATE CN. NO. DRAFTS CHECKER ENG. APP.

TOLERANCES

SCALE

ALL OTHERS

DEC. DIM. ±  
 FRAC. DIM. ±  
 ANGULAR DIM. ±

DRILL, PUNCH, COMMERCIAL STOCK  
 SIZES AND MANUFACTURERS  
 TOLERANCES ARE NOT INCLUDED.