

PL 112 B

IF IT IS FOUND DESIRABLE TO CHANGE ANY TOLERANCE OR OTHER DETAIL SPECIFIED ON THIS DRAWING NOTIFY THE PURCHASER PROMPTLY.

MAXIMUM ALLOWABLE TOLERANCES HAVE BEEN DETERMINED AND DEVIATIONS WILL BE CAUSE FOR REJECTION. REMOVE ALL BURRS AND SHARP EDGES

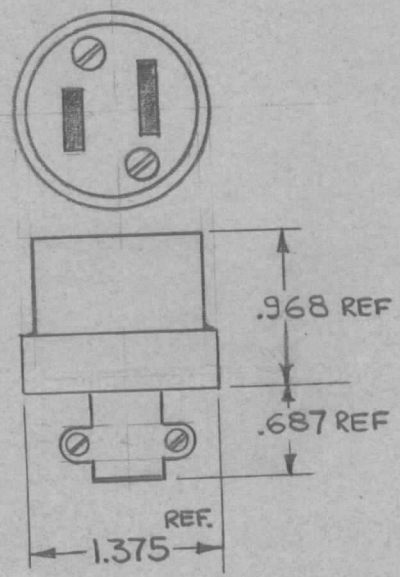
USED ON

MODEL	PROJECT NO.	ASS'Y. NO.	DATE
-------	-------------	------------	------

TMC NO	CAT NO.	CORD HOLE INCHES
PL 112-1	7259	.296 To .406
PL 112-2	7257	.406 To .625

SPECIFICATIONS

QUAN. OF CONTACTS: 2  
 QUAN. OF MATING ENDS: 1  
CONTACT DATA:  
 TYPE: FEMALE  
 CURRENT RATING: 10A @ 250V  
 15A @ 125V  
 POLARIZATION: CONTACT SIZE  
 CABLE ACCOMMODATION: SEE CHART  
 FUSE ACCOMMODATION: NONE  
 CORD PROTECTOR: NONE



**STANDARD DRAWING**

REQ.	ITEM	PART NO.	DESCRIPTION	SYMBOL
			THE TECHNICAL MATERIEL CORP. MAMARONECK. NEW YORK	
			CONNECTOR, PLUG	
			FEMALE, A.C.	
			DRAWN	ELEC. DES. APP. MECH. DES. APP.
			CHECKED	FINAL APPROVAL
				PL 112 B

ISSUE	ITEM	CHANGED FROM	DATE	CN. NO.	DRAFTS	CHECKER	ENG. APP.
B	2	DICT. & SPECS ADDED TITLE REVISED, MFR. DELE	10.27.64	12779	WBS	WBS	JC
A	1	CAT. NOS. ADDED	7/29/53	1	JAD		

TOLERANCES SCALE 5401-43

ALL OTHERS DEC. DIM. ±  
 FRAC. DIM. ±  
 ANGULAR DIM. ±

DRILL, PUNCH, COMMERCIAL STOCK SIZES AND MANUFACTURERS TOLERANCES ARE NOT INCLUDED.