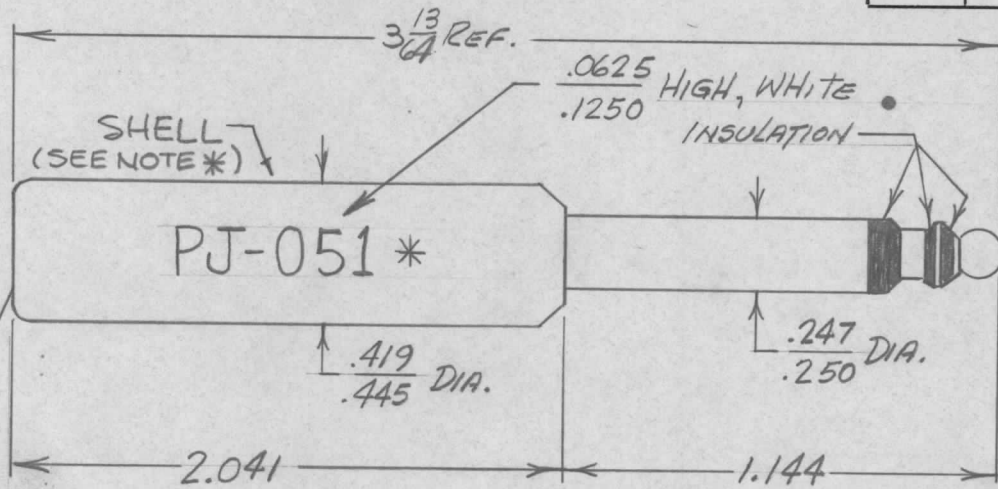
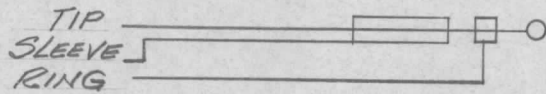


REQ. PER UNIT	USED ON			PJ051	Ø
	MODEL	ASS'Y. NO.	DATE		



INTERNAL THREAD $\frac{5}{16}$ -24 UNF-2B TRUNCATED .301 MAJOR DIA. ± 0.002

SCHEMATIC



* NOTE: "R" OR "B" DEPENDENT ON COLOR, RED OR BLACK RESPECTIVELY.

TMC P/N SHALL BE IN THE FOLLOWING FORM:

PJ051 B

BASIC P/N COLOR (SEE NOTE)

SPECIFICATIONS

MATERIAL:

TIP, ROD - MACHINED BRASS
 RING SLEEVE - MACHINED BRASS
 BODY - MACHINED BRASS
 SCREWS - MACHINED BRASS
 TERMINALS - BRASS, HOT TINNED
 DIELECTRIC - ETHYL CELLULOSE
 TYPE EM-1 PER MIL-P-3412
 HANDLE - PBE PHENOLIC PER
 MIL-P-79

COLOR: RED OR BLACK (SEE NOTE*)

VOLTAGE: 500 VRMS MAX.

CONTACT RESISTANCE: 0.02 OHM MAX.

APPLICABLE SPEC: MIL-P-642
 AND AMENDMENTS

MATES WITH TMC PART No. JJ033

REQ. ITEM	PART NO.	DESCRIPTION	SYMBOL
		THE TECHNICAL MATERIEL CORP. MAMARONECK, NEW YORK	
		STOCK SIZE	
Ø	ORIGINAL PACKAGE FOR PRODUCTION	42065	Ø 28
SYM	DESCRIPTION	DATE	CH. NO. DRAFTS CHECKER ENG. APP.
	UNLESS OTHERWISE SPECIFIED DIMENSIONS ARE IN INCHES AND INCLUDE CHEMICALLY APPLIED OR PLATED FINISHES	SCALE	1/4
	DECIMALS .X \pm .05 .XX \pm .01 .XXX \pm .005	FRACTIONS \pm 1/64 ANGLES \pm 0° 30'	CODE
	TOLERANCES		
		TYPE & TEMPER	HEAT TREAT. SPEC.
		FINISH & SPEC. NO.	ELEC. DES. APP. MECH. DES. APP.
		HLA	JOB
		drawn	checked
			FINAL APPROVAL
			PJ051 Ø

IF IT IS FOUND DESIRABLE TO CHANGE ANY TOLERANCE OR OTHER DETAIL SPECIFIED ON THIS DRAWING NOTIFY THE PURCHASER PROMPTLY.

STANDARD DRAWING

PJ-054(*)

MAXIMUM ALLOWABLE TOLERANCES HAVE BEEN DETERMINED AND DEVIATIONS WILL BE CAUSE FOR REJECTION. REMOVE ALL BURRS AND SHARP EDGES

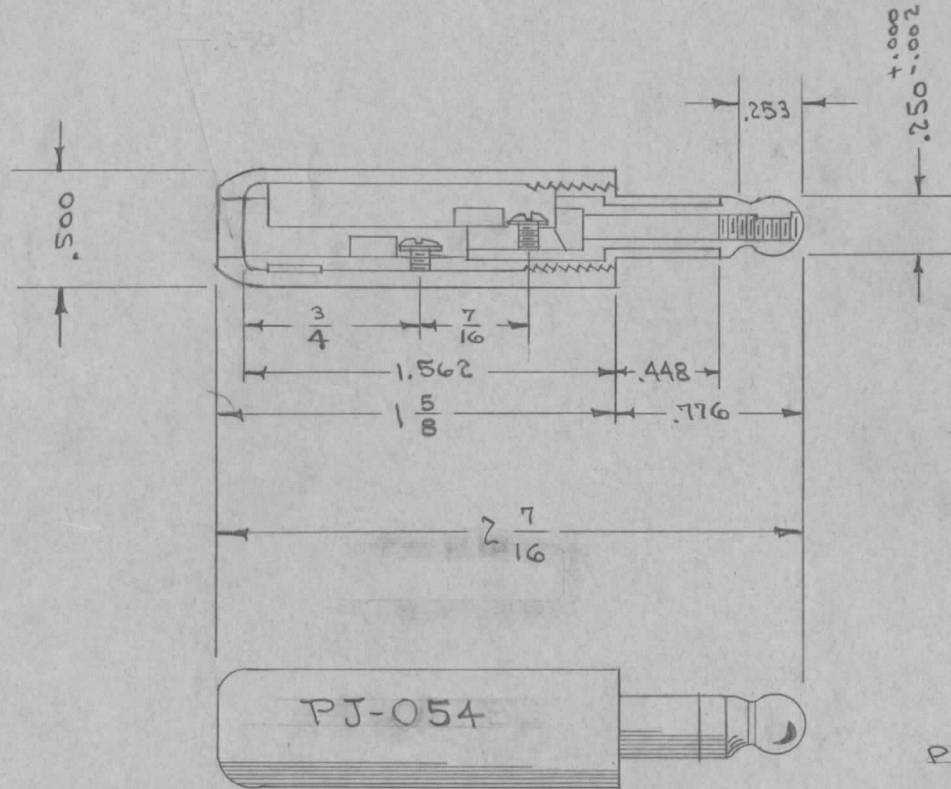
USED ON

MODEL

PROJECT NO.

ASS'Y. NO.

DATE



NOTE
SHELL SHALL BE MOLDED PLASTIC,
* BLACK FOR TYPE PJ-054B
RED FOR TYPE PJ-054R

PLUG SHALL BE IN ACC. WITH JAN-P-642 AND AMEND.

LETTERS TO BE 1/8 HIGH GOTHIC. WHITE FILLED

DIM. FOR REF. ONLY

REQ.	ITEM	PART NO.	DESCRIPTION	SYMBOL
		#	THE TECHNICAL MATERIEL CORP. MAMARONECK, NEW YORK	
		STOCK SIZE		
		#	PLUG, TELEPHONE	
		MATERIAL	(TIP-SLEEVE)	
		WEIGHT PER PC.		
		TYPE & TEMPER	CDD 1-13-53	
			DRAWN	ELEC. DES. APP. MECH. DES. APP.
		HEAT TREAT. SPEC.	Checked	Final Approval
		FINISH & SPEC. NO.	SUPERSEDES PL-54 (JAN-P-642)	PJ-054(*)

ISSUE	ITEM	CHANGED FROM	DATE	CN. NO.	DRAFTS	CHECKER	ENG. APP.
TOLERANCES			SCALE				
ALL OTHERS	DEC. DIM. $\pm .005$ FRAC. DIM. $\pm 1/64$ ANGULAR DIM. \pm	DRILL, PUNCH, COMMERCIAL STOCK SIZES AND MANUFACTURERS TOLERANCES ARE NOT INCLUDED.					

IF IT IS FOUND DESIRABLE TO CHANGE ANY TOLERANCE OR OTHER DETAIL SPECIFIED ON THIS DRAWING NOTIFY THE PURCHASER PROMPTLY.

STANDARD DRAWING

PJ-055

MAXIMUM ALLOWABLE TOLERANCES HAVE BEEN DETERMINED AND DEVIATIONS WILL BE CAUSE FOR REJECTION. REMOVE ALL BURRS AND SHARP EDGES

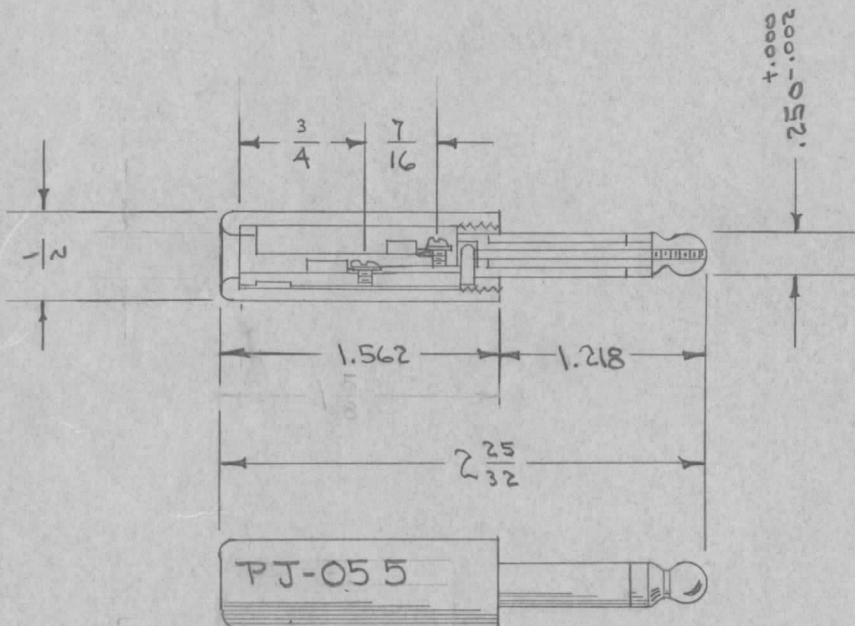
USED ON

MODEL

PROJECT NO.

ASS'Y. NO.

DATE



NOTE
 SHELL SHALL BE MOLDED PLASTIC,
 * { BLACK FOR TYPE PJ-055 B
 RED FOR TYPE PJ-055 R
 METAL FOR TYPE PJ-055 M

LETTERS TO BE 1/8 HIGH GOTHIC - WHITE - FILLED

DIM. FOR REF. ONLY

PLUG SHALL BE IN ACC. WITH JAN. P-642 AND AMEND.

REQ.	ITEM	PART NO.	DESCRIPTION	SYMBOL
			THE TECHNICAL MATERIEL CORP. MAMARONECK, NEW YORK	
		STOCK SIZE		
			PLUG, TELEPHONE (TIP-SLEEVE)	
		MATERIAL		
		WEIGHT PER PC.		
		TYPE & TEMPER	CDD. 1-12-54	
			DRAWN	ELEC. DES. APP. MECH. DES. APP.
		HEAT TREAT. SPEC.	CHECKED	FINAL APPROVAL
			SUPERSEDES PL-55 (JAN-P-642)	PJ-055(*)
		FINISH & SPEC. NO.		

ISSUE	ITEM	CHANGED FROM	DATE	CN. NO.	DRAFTS	CHECKER	ENG. APP.
TOLERANCES			SCALE				
ALL OTHERS	DEC. DIM. ± FRAC. DIM. ± ANGULAR DIM. ±	DRILL, PUNCH, COMMERCIAL STOCK SIZES AND MANUFACTURERS TOLERANCES ARE NOT INCLUDED.					

IF IT IS FOUND DESIRABLE TO CHANGE ANY TOLERANCE OR OTHER DETAIL SPECIFIED ON THIS DRAWING NOTIFY THE PURCHASER PROMPTLY.

STANDARD DRAWING

PJ-068

MAXIMUM ALLOWABLE TOLERANCES HAVE BEEN DETERMINED AND DEVIATIONS WILL BE CAUSE FOR REJECTION. REMOVE ALL BURRS AND SHARP EDGES

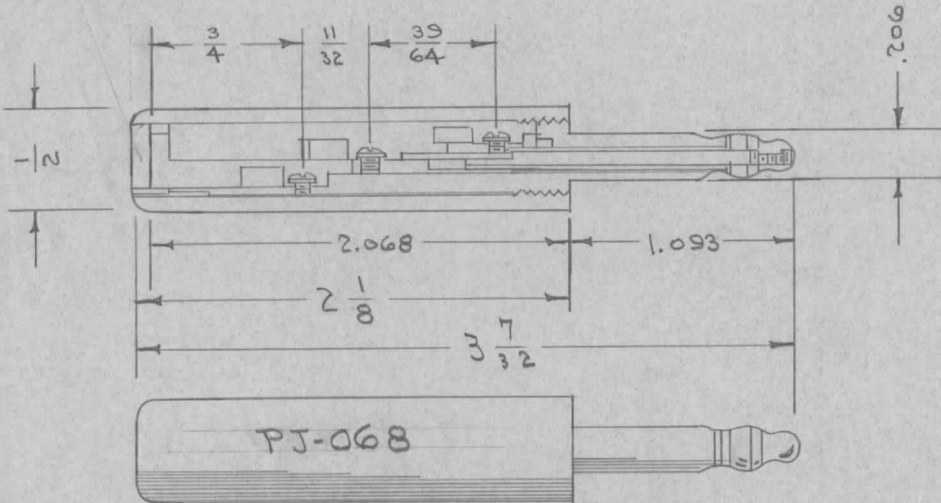
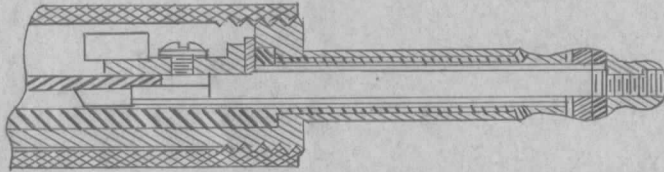
USED ON

MODEL

PROJECT NO.

ASS'Y. NO.

DATE



LETTERS TO BE 1/8 HIGH GOTHIC.- WHITE FILLED

DIM. FOR REF. ONLY

PLUG TO BE IN ACC. WITH JAN-P-642 & AMEND.

REQ.	ITEM	PART NO.	DESCRIPTION	SYMBOL
			THE TECHNICAL MATERIEL CORP. MAMARONECK, NEW YORK	
		STOCK SIZE	PLUG, TELE PHONE (TIP-SLEEVE-RING)	
		MATERIAL	WEIGHT PER PC.	
		TYPE & TEMPER	C.D.D. 1-13-54	
		HEAT TREAT. SPEC.	DRAWN	ELEC. DES. APP. MECH. DES. APP.
		FINISH & SPEC. NO.	CHECKED	FINAL APPROVAL
			SUPERSEDES PL-68 (JAN-P-642)	
			PJ-068	

ISSUE	ITEM	CHANGED FROM	DATE	CN. NO.	DRAFTS	CHECKER	ENG. APP.
TOLERANCES			SCALE $\frac{1}{1}$				
ALL OTHERS	DEC. DIM. \pm FRAC. DIM. \pm ANGULAR DIM. \pm		DRILL, PUNCH, COMMERCIAL STOCK SIZES AND MANUFACTURERS TOLERANCES ARE NOT INCLUDED.				

THE CONTENTS OF THIS DRAWING ARE THE EXCLUSIVE PROPERTY OF THE TECHNICAL MATERIEL CORP. ITS UNAUTHORIZED USE OR REPRODUCTION IN WHOLE OR IN PART IS STRICTLY FORBIDDEN.

REQ. PER UNIT

USED ON

MODEL

ASS'Y. NO.

DATE

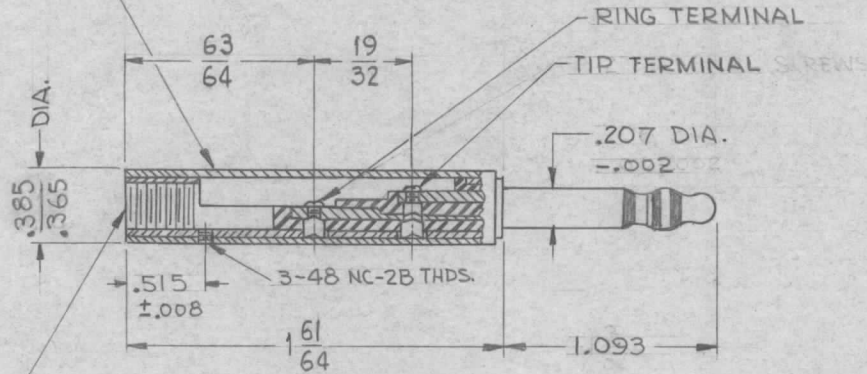
1

SPU-2

8-24-62

PJ-309

NOTE: MIL TYPE NO. PJ-309 TO BE MOLDED, ENGRAVED OR METAL STAMPED ON SHELL.



SPECIFICATIONS:

TIP ROD
RING SLEEVE } MACHINED FROM BRASS
BODY } NATURAL FINISH
SCREWS }
TERMINALS - BRASS, HOT TINNED
INSULATION - ETHYL CELLULOSE, TYPE PER MIL-M-3412
SHELL - RED PLASTIC, PER MIL-P-642 A

NOTE:

MATES WITH MILITARY JACK JJ-083, JJ-033, & JJ-133.

REF: MIL TYPE PJ-309 PER MIL-P-642 A

							REQ.	ITEM	PART NO.	DESCRIPTION			SYMBOL	
										THE TECHNICAL MATERIEL CORP. MAMARONECK, NEW YORK PLUG, TELEPHONE (LITTEL)				
SYM	DESCRIPTION	DATE	CH. NO.	DRAFTS	CHECKER	ENG. APP.	MATERIAL							
UNLESS OTHERWISE SPECIFIED:														
DIMENSIONS ARE IN INCHES							SCALE: —							
TOLERANCES ON							MAXIMUM ALLOWABLE TOLERANCES HAVE BEEN DETERMINED AND ANY DEVIATIONS WILL BE CAUSE FOR REJECTION. REMOVE ALL BURRS AND SHARP EDGES							
FRAC. ± 1/64 DEC. ± .005 ANGLES ± 1/2°														
							TYPE & TEMPER	HEATTREAT. SPEC.	DRAWN	CHECKED	FINAL APPROVAL			
							FINISH & SPEC. NO.			ELEC. DES. APP.	MECH. DES. APP.	PJ-309		