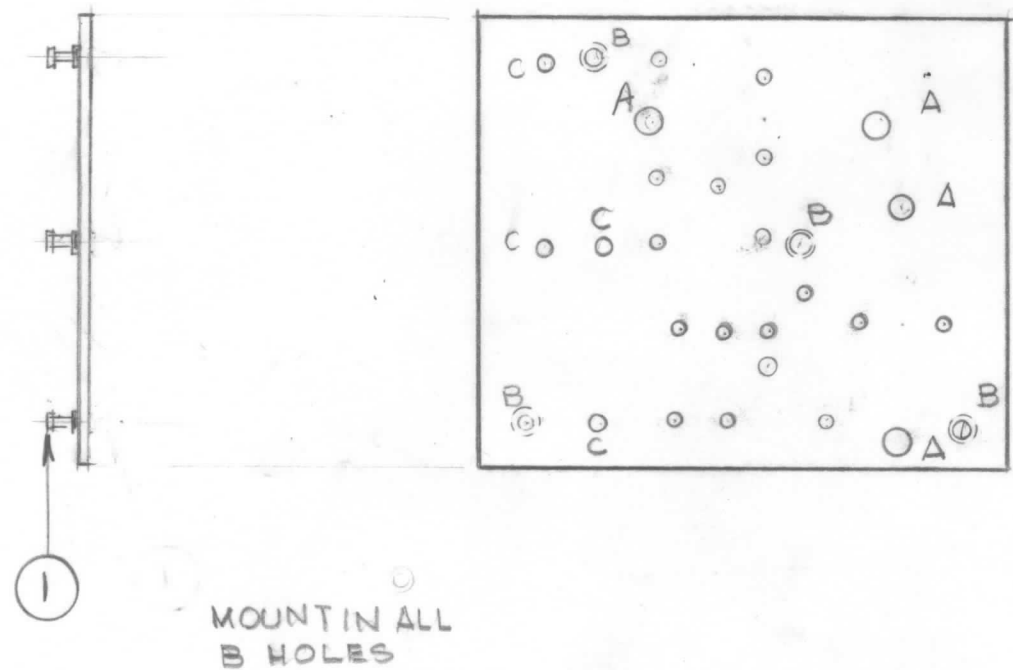


REVISIONS							
E.M.N. NO.	DRAFT	CHKD	ZONE	LTR	DESCRIPTION	DATE	APPROVED
	GDL			Ø	ORIGINAL RELEASE FOR PRODUCTION	3-19-91	ØB



HOLES:
 A - .144 DIA 4 REQ'D
 B - .081 DIA, 4 REQ'D
 C - .062 DIA 4 REQ'D
 .052 DIA ALL OTHERS HOLES

1	PAL-15	A5874
QTY / UNIT	MODEL USED ON	ASS'Y NO.
APPLICATION		
	CODE	

NOTICE TO PERSONS RECEIVING THIS DRAWING
 THE TECHNICAL MATERIEL CORPORATION claims proprietary right in the material disclosed hereon. This drawing is issued in confidence for engineering information only and may not be reproduced or used to manufacture anything shown hereon without permission from THE TECHNICAL MATERIEL CORPORATION to the user. This drawing is loaned for mutual assistance and is subject to recall at any time.

UNLESS OTHERWISE SPECIFIED DIMENSIONS ARE IN INCHES AND INCLUDE CHEMICALLY APPLIED OR PLATED FINISHES		FINAL APPROVAL	DATE
DECIMALS .X ± .05 .XX ± .01 .XXX ± .005		MECH. DES.	DATE
FRACTIONS 1/64 ANGLES 0° -30'		ELECT. DES.	DATE
MATERIAL		CHECKED	DATE
FINISH		DRAWN	DATE

4	1	TE 127-2	TERMINAL, STUD	B
REQ'D ITEM	PART NUMBER	DESCRIPTION		SYM.
LIST OF MATERIAL				
THE TECHNICAL MATERIEL CORP. MAMARONECK, NEW YORK				
MACHINING P.C. BOARD (BY PASS CONTROL (UHF))				
SIZE	CODE IDENT. NO.	DWG NO.	ISSUE	
B	82679	PC 874	Ø	
SCALE	1:1	SHEET 2 OF 2		