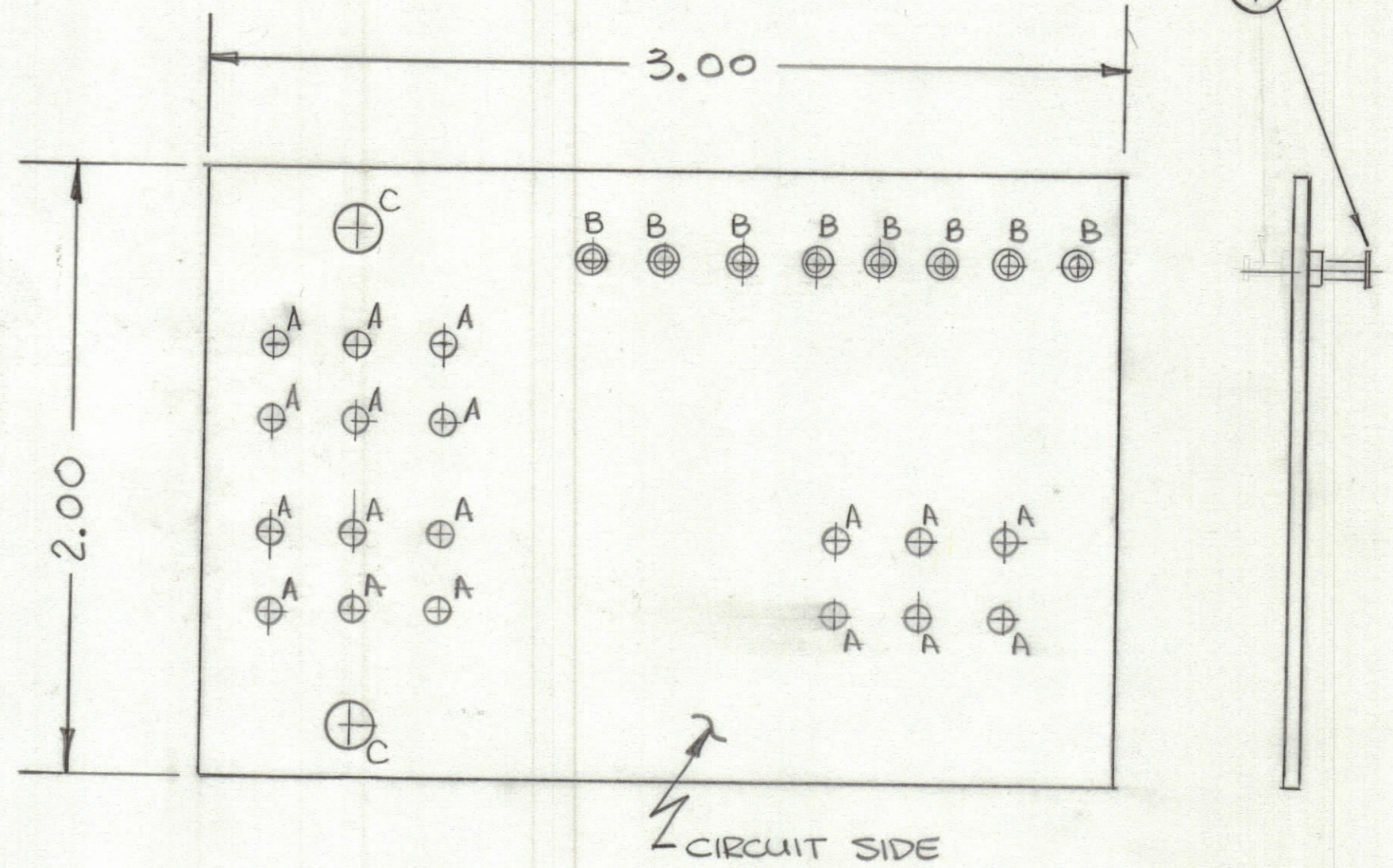


REVISIONS						
ZONE	LTR	DESCRIPTION	DATE	E.M.N.NO	DRAFT	CHKD APPD
	Ø	ORIGINAL RELEASE FOR PRODUCTION	4/18/83			



FABRICATION NOTES:
 TO BE MANUFACTURED IN ACCORDANCE WITH TMC SPEC S735 AND SPECIFICALLY TO BE MANUFACTURED IN ACCORDANCE WITH TMC SPEC S735 AND SPECIFICALLY
 1. OVERALL MATERIAL THICKNESS .062±.006 AS PER (pp3.1,3.2)
 2. CONDUCTOR PATTERN TO BE COPPER FOIL AS PER (pp4.1), PLATING TO BE TIN LEAD AS PER (pp13.2.2,13.2.1)
 3. MATERIAL TO BE G10 GLASS EPOXY, LAMINATE 2 OZ COPPER CLAD, (SINGLE SIDE)

Hole	Description	Req
A	.070 DIA	18
B	.081 DIA	8
C	11/64 DIA	2

1	AX5256 RCST-2	
QTY / UNIT	MODEL USED ON	ASS'Y NO.
APPLICATION		
CODE		
<small>NOTICE TO PERSONS RECEIVING THIS DRAWING</small> <small>THE TECHNICAL MATERIEL CORPORATION claims proprietary right in the material disclosed hereon. This drawing is issued in confidence for engineering information only and may not be reproduced or used to manufacture anything shown hereon without permission from THE TECHNICAL MATERIEL CORPORATION to the user. This drawing is loaned for mutual assistance and is subject to recall at any time.</small>		

UNLESS OTHERWISE SPECIFIED DIMENSIONS ARE IN INCHES AND INCLUDE CHEMICALLY APPLIED OR PLATED FINISHES	
TOLERANCES ON	
DECIMALS .X ± .05 .XX ± .01 .XXX ± .005	FRACTIONS ± 1/64 ANGLES ± 0° .30'
MATERIAL	
FINISH	

7	1	TE127-2	TERMINAL STUD	B
QTY. REQ.	ITEM	PART NO.	DESCRIPTION	SYMBOL
LIST OF MATERIAL				
<small>FINAL APPROVAL</small> _____ <small>DATE</small> _____ <small>MECH. DES.</small> _____ <small>DATE</small> _____ <small>ELECT. DES.</small> _____ <small>DATE</small> _____ <small>CHECKED</small> _____ <small>DATE</small> _____ <small>DRAWN</small> _____ <small>DATE</small> 4-18-83				
THE TECHNICAL MATERIEL CORP. MAMARONECK, NEW YORK PRINTED CIRCUIT BOARD SWITCHING CIRCUIT				
SIZE	CODE	IDENT.NO.	DWG NO.	ISSUE
C	82679	PC845		Ø
SCALE			SHEET	OF