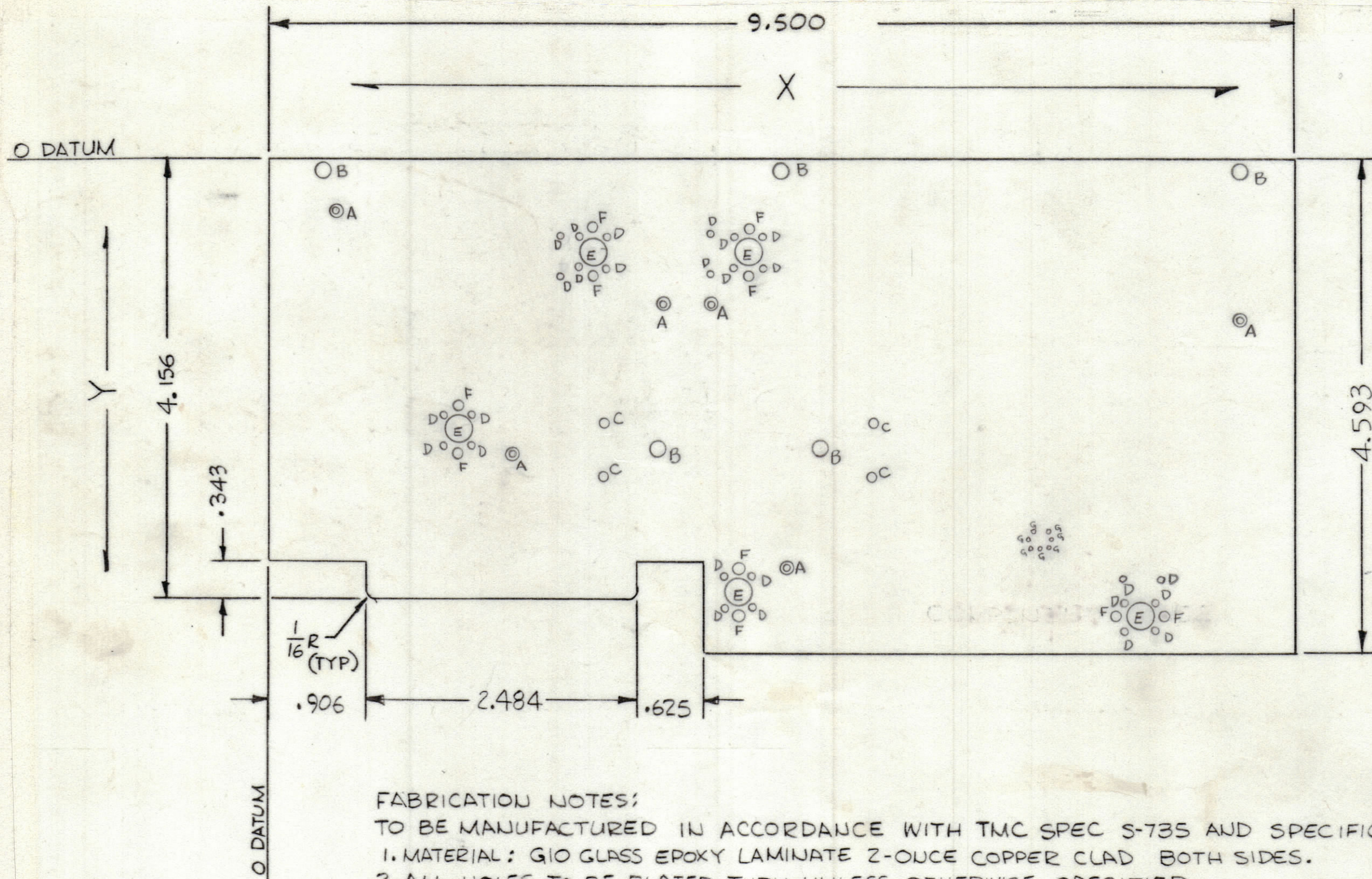


REVISIONS						
ZONE	LTR	DESCRIPTION	DATE	E.M.N.NO	DRAFT	CHKD APPD
	Ø	ORIGINAL RELEASE for PRODUCTION	3-5-82			



Hole	Description	Req
A	.081 DIA.	6
B	.125 DIA.	5
C	.062 DIA.	4
D	.050 DIA.	26
E	.312 DIA.	5
F	.072 DIA.	10
G	.032 DIA.	7
H	.042 DIA	338 REQ

DO NOT PLATE-THRU

- FABRICATION NOTES:
 TO BE MANUFACTURED IN ACCORDANCE WITH TMC SPEC S-735 AND SPECIFICALLY.
 1. MATERIAL: GIO GLASS EPOXY LAMINATE 2-OUNCE COPPER CLAD BOTH SIDES.
 2. ALL HOLES TO BE PLATED THRU UNLESS OTHERWISE SPECIFIED.
 3. EDGE BOARD CONNECTOR (FINGERS) SHALL BE GOLD PLATED (PARAGRAPH 10)
 4. HOLE LOCATIONS LOCATED APPROX AS SHOWN.
 5. MARKING TO BE WHITE GOTHIC, COMPONENT SIDE.
 6. SOLDER MASK REQUIRED ON CIRCUIT SIDE.

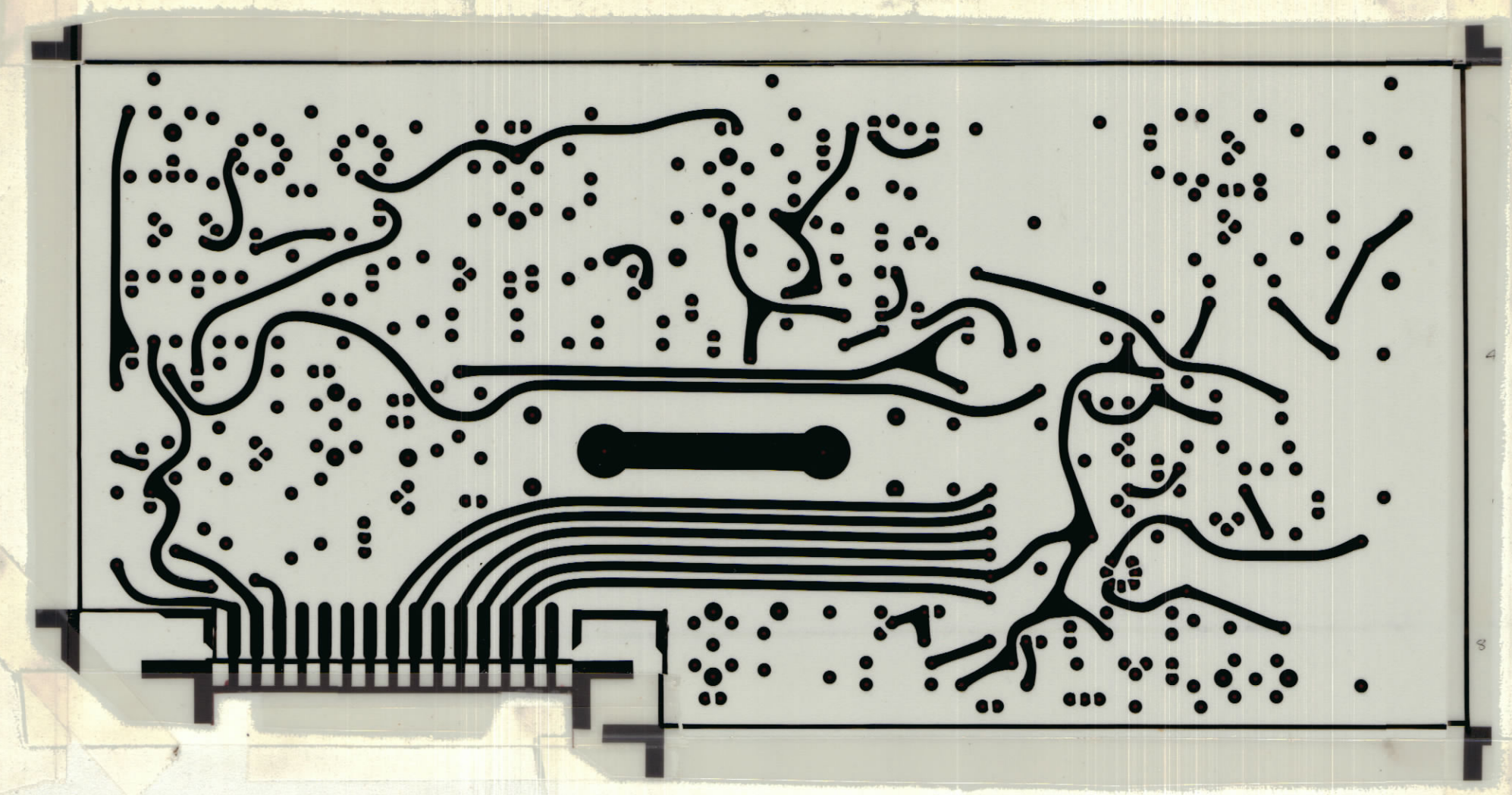
6	1	TE127-2	TERMINAL STUD (TPI-TP6)	A
QTY. REQ.	ITEM	PART NO.	DESCRIPTION	SYMBOL

LIST OF MATERIAL			
THE TECHNICAL MATERIEL CORP. MAMARONECK, NEW YORK			
CARRIER GENERATOR PRINTED WIRING BOARD REFERENCE NO.4079994-1			
SIZE	CODE IDENT.NO.	DWG NO.	ISSUE
C	82679	PC826-1	Ø
SCALE			SHEET 1 OF 2

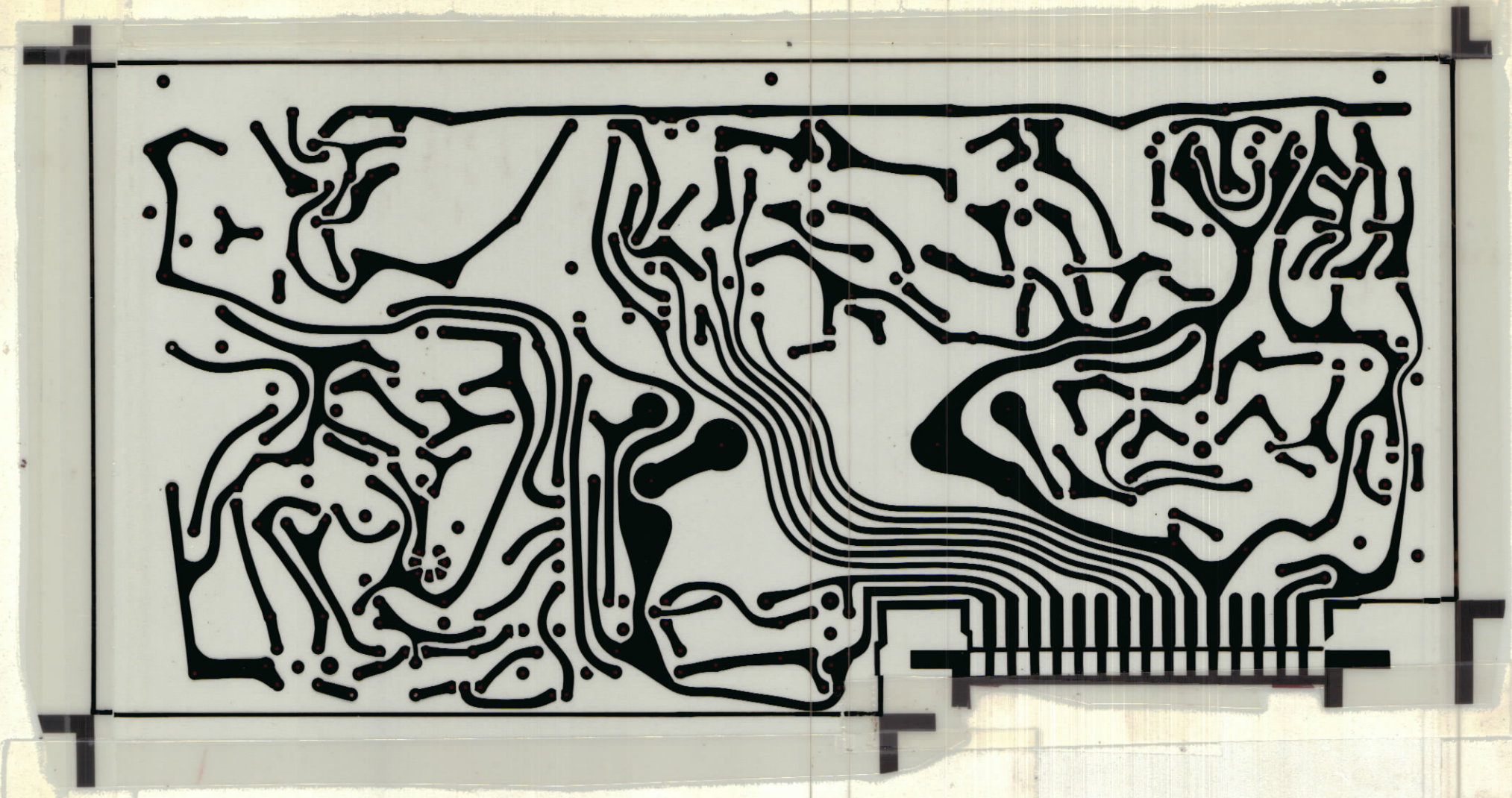
UNLESS OTHERWISE SPECIFIED DIMENSIONS ARE IN INCHES AND INCLUDE CHEMICALLY APPLIED OR PLATED FINISHES		FINAL APPROVAL	DATE
TOLERANCES ON		MECH. DES.	DATE
DECIMALS	FRACTIONS	ELECT. DES.	DATE
.X ± .05	± 1/64	CHECKED	DATE
.XX ± .01	ANGLES	DRAWN	DATE
.XXX ± .005	± 0° -30'		
MATERIAL			
FINISH			

QTY / UNIT	MODEL USED ON	ASS'Y NO.
		A5794
APPLICATION		
CODE		
NOTICE TO PERSONS RECEIVING THIS DRAWING THE TECHNICAL MATERIEL CORPORATION claims proprietary right in the material disclosed hereon. This drawing is issued in confidence for engineering information only and may not be reproduced or used to manufacture anything shown hereon without permission from THE TECHNICAL MATERIEL CORPORATION to the user. This drawing is loaned for mutual assistance and is subject to recall at any time.		

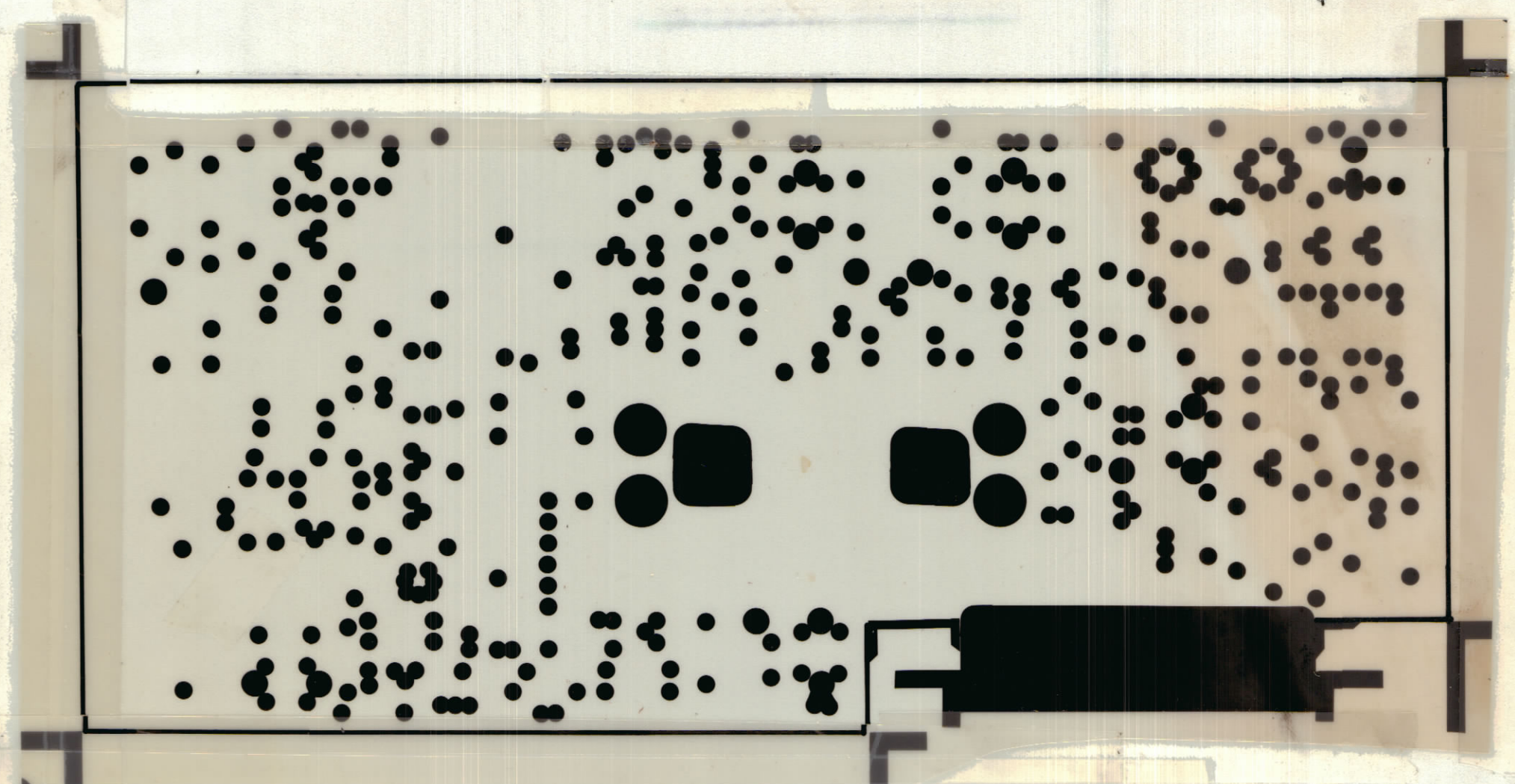
REVISIONS							
E.M.N.O.	DRAFT	CHKD	ZONE	LTR	DESCRIPTION	DATE	APPROVED



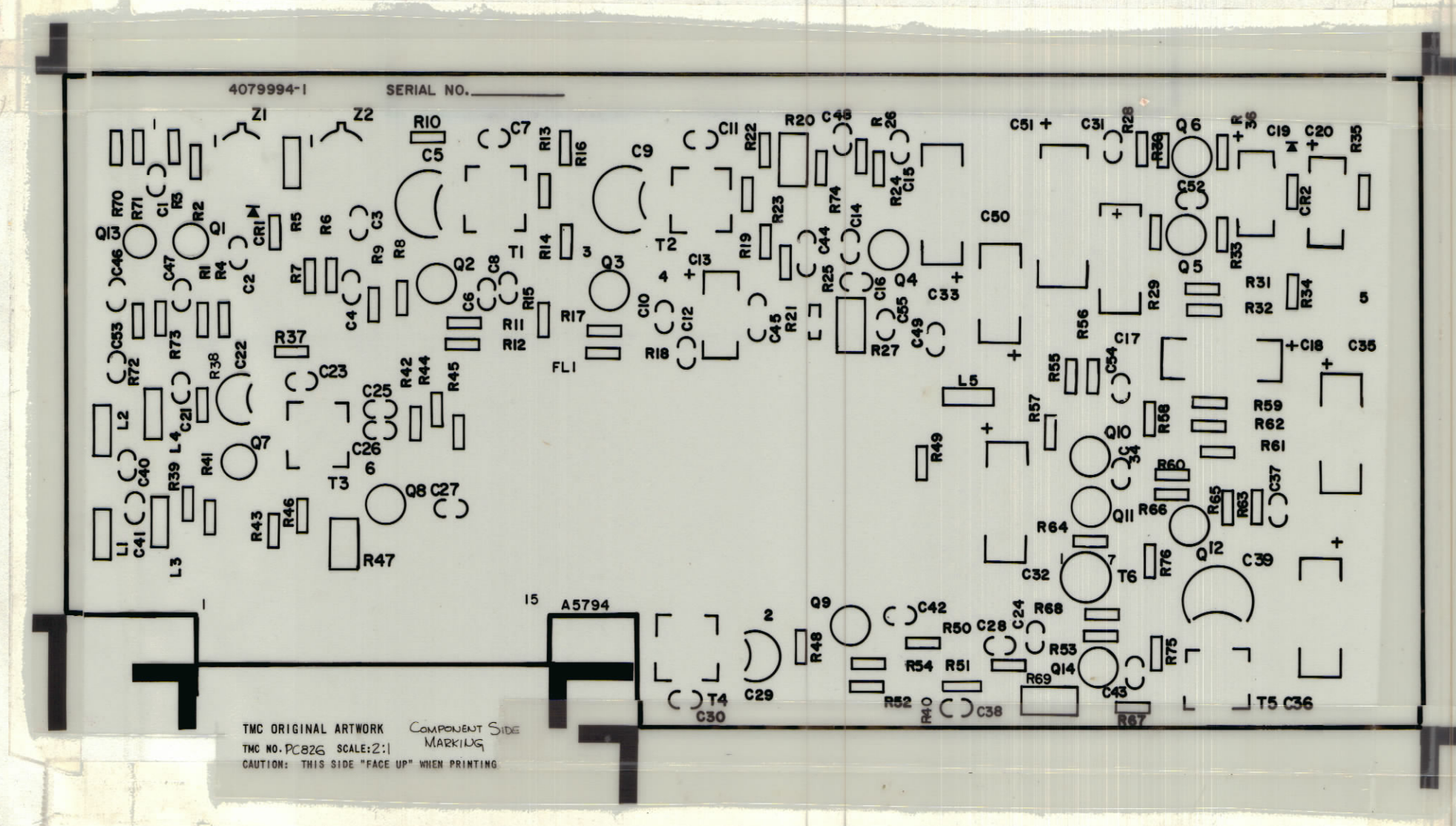
COMPONENT SIDE PC826-2



CIRCUIT SIDE PC826-3



SOLDER MASK PC826-5
(CIRCUIT SIDE)



MARKING PC826-4
(COMPONENT SIDE)

LOCKHEED SPECIAL		A5794
QTY / UNIT	MODEL USED ON	ASS'Y NO.
	APPLICATION	
	CODE	

UNLESS OTHERWISE SPECIFIED
DIMENSIONS ARE IN INCHES
AND INCLUDE CHEMICALLY APPLIED
OR PLATED FINISHES

TOLERANCES ON
DECIMALS .X ± .05
.XX ± .01
.XXX ± .005

FRACTIONS ± 1/64
ANGLES ± 0° -30'

QTY. REQ.	ITEM	PART NO.	DESCRIPTION	SYMBOL
LIST OF MATERIAL				
FINAL APPROVAL		DATE		THE TECHNICAL MATERIEL CORP. MAMARONECK, NEW YORK CARRIER GENERATOR PRINTED WIRING BOARD REFERENCE NO. 4079994-1
MECH. DES. <i>RU</i>		DATE 11-25-81		
ELECT. DES.		DATE		
CHECKED		DATE		
DRAWN		DATE 11-25-81		SIZE CODE IDENT NO. DWG NO. ISSUE D 82679 PC826 2
MATERIAL				
FINISH				SCALE SHEET 2 OF 2

NOTICE TO PERSONS RECEIVING THIS DRAWING
THE TECHNICAL MATERIEL CORPORATION claims proprietary right in the material disclosed hereon.
This drawing is issued in confidence for engineering information only and may not be reproduced or used
to manufacture anything shown hereon without permission from THE TECHNICAL MATERIEL CORPORATION
to the user. This drawing is loaned for mutual assistance and is subject to recall at any time.