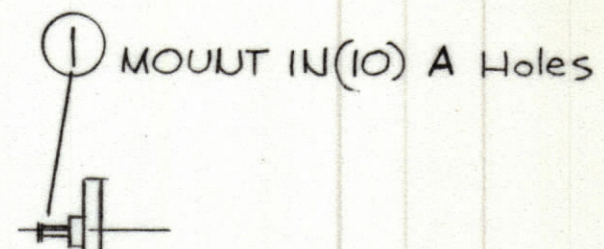
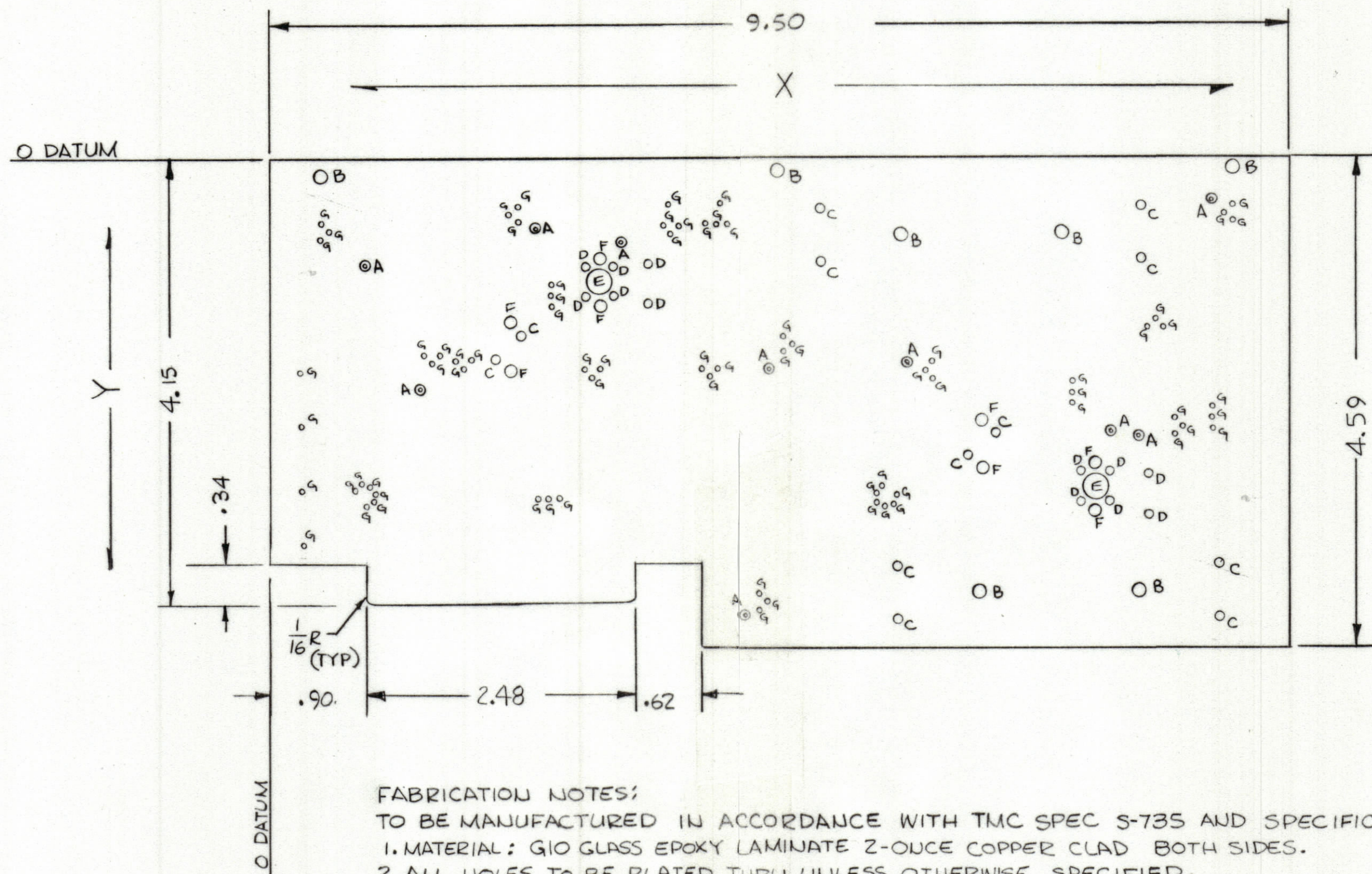


REVISIONS						
ZONE	LTR	DESCRIPTION	DATE	E.M.N.NO	DRAFT	CHKD APPD
	Ø	ORIGINAL RELEASE FOR PRODUCTION	8-5-82	-	VIB	



Hole	Description	Req
A	.081 DIA	10
B	.125 DIA	7
C	.062 DIA	12
D	.050 DIA	12
E	.281 DIA	2
F	.072 DIA	8
G	.032 DIA	71
UNMARKED Holes .042 DIA		277

DO NOT PLATE-THRU

- FABRICATION NOTES:**
 TO BE MANUFACTURED IN ACCORDANCE WITH TMC SPEC S-735 AND SPECIFICALLY.
 1. MATERIAL: GIO GLASS EPOXY LAMINATE 2-OUNCE COPPER CLAD BOTH SIDES.
 2. ALL HOLES TO BE PLATED THRU UNLESS OTHERWISE SPECIFIED.
 3. EDGE BOARD CONNECTOR (FINGERS) SHALL BE GOLD PLATED (PARAGRAPH 10)
 4. HOLE LOCATIONS LOCATED APPROX AS SHOWN.
 5. MARKING TO BE WHITE GOTHIC, COMPONENT SIDE.
 6. SOLDER MASK REQUIRED ON CIRCUIT SIDE.

QTY. REQ.	ITEM	PART NO.	DESCRIPTION	SYMBOL
10	1	TE127-2	TERMINAL, STANDOFF (TPI thru TPI)	A

LIST OF MATERIAL			
THE TECHNICAL MATERIEL CORP. MAMARONECK, NEW YORK			
SIDE BAND GENERATOR PRINTED WIRING BOARD REFERENCE NO. 4079992-1			

UNLESS OTHERWISE SPECIFIED DIMENSIONS ARE IN INCHES AND INCLUDE CHEMICALLY APPLIED OR PLATED FINISHES	FINAL APPROVAL	DATE
TOLERANCES ON DECIMALS .X ± .05 .XX ± .01 .XXX ± .005 FRACTIONS ± 1/64 ANGLES ± 0°-30'	MECH. DES.	DATE
	ELECT. DES.	DATE
	CHECKED	DATE
	DRAWN R Uzzo	DATE 10-22-81

QTY / UNIT	MODEL USED ON	ASS'Y NO. A5793
APPLICATION		
CODE		
<small>NOTICE TO PERSONS RECEIVING THIS DRAWING</small> THE TECHNICAL MATERIEL CORPORATION claims proprietary right in the material disclosed herein. This drawing is issued in confidence for engineering information only and may not be reproduced or used to manufacture anything shown hereon without permission from THE TECHNICAL MATERIEL CORPORATION to the user. This drawing is loaned for mutual assistance and is subject to recall at any time.		

MATERIAL	SIZE	CODE IDENT. NO.	DWG NO.	ISSUE
FINISH	C	82679	PC825-1	Ø
SCALE			SHEET 1	OF 2