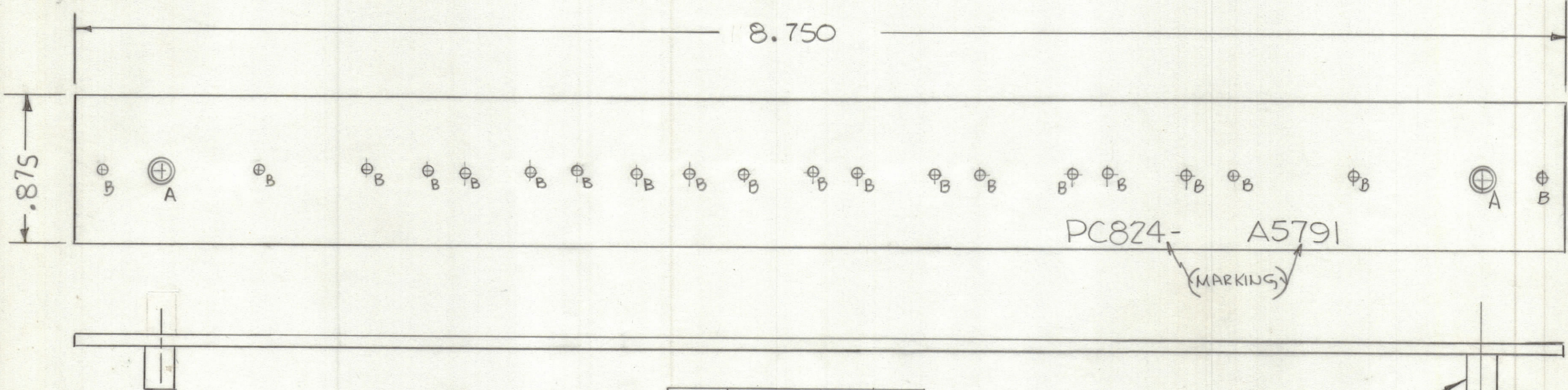


REVISIONS						
ZONE	LTR	DESCRIPTION	DATE	E.M.N.NO	DRAFT	CHKD APPD
	Ø	ORIGINAL RELEASE	11-11-81			

FABRICATION NOTES:
 TO BE MANUFACTURED IN ACCORDANCE WITH TMC SPEC S735 AND SPECIFICALLY
 1. OVERALL MATERIAL THICKNESS .062±.006 AS PER (pp3.1,3.2)
 2. CONDUCTOR PATTERN TO BE COPPER FOIL AS PER (pp4.1), PLATING TO BE TIN LEAD AS PER (pp13.2.2,13.2.1)
 3. MATERIAL TO BE G10 GLASS EPOXY, LAMINATE 2 OZ COPPER CLAD, (SINGLE SIDE)
 4. ~~ALL CONNECTORS (PINS) SHALL BE GOLD PLATED AS PER (pp 10.1)~~
 5. ALL HOLES TO BE PLATED THRU AS PER (pp 8.9.5) UNLESS OTHERWISE SPECIFIED



Hole	Description	Req
A	.189 DIA	2
B	.062 DIA	20

1 MOUNT ON SIDE OPPOSITE MARKING (2 REQ)

SCALE 2:1

QTY / UNIT	MODEL USED ON	ASS'Y NO.
1	RW139	
APPLICATION		
	CODE	

NOTICE TO PERSONS RECEIVING THIS DRAWING
 THE TECHNICAL MATERIEL CORPORATION claims proprietary right in the material disclosed hereon. This drawing is issued in confidence for engineering information only and may not be reproduced or used to manufacture anything shown hereon without permission from THE TECHNICAL MATERIEL CORPORATION to the user. This drawing is loaned for mutual assistance and is subject to recall at any time.

UNLESS OTHERWISE SPECIFIED DIMENSIONS ARE IN INCHES AND INCLUDE CHEMICALLY APPLIED OR PLATED FINISHES

TOLERANCES ON
 DECIMALS: .X ± .05, .XX ± .01, .XXX ± .005
 FRACTIONS: ± 1/64, ANGLES: ± 0° -30'

QTY. REQ.	ITEM	PART NO.	DESCRIPTION	SYMBOL
2	1	TE164-11	TERMINAL STANDOFF	
LIST OF MATERIAL				
FINAL APPROVAL		DATE	THE TECHNICAL MATERIEL CORP. MAMARONECK, NEW YORK MACHINING PRINTED CIRCUIT Bd (Resistor Mts)	
MECH. DES.		DATE		
ELECT. DES.		DATE		
CHECKED		DATE		
DRAWN		DATE	SIZE	CODE IDENT.NO.
			C	82679
			DWG NO.	
			DC824	
			SCALE	ISSUE
				Ø
			SHEET	OF