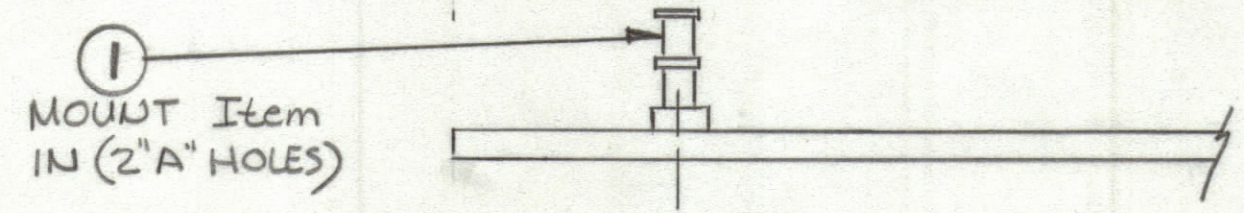
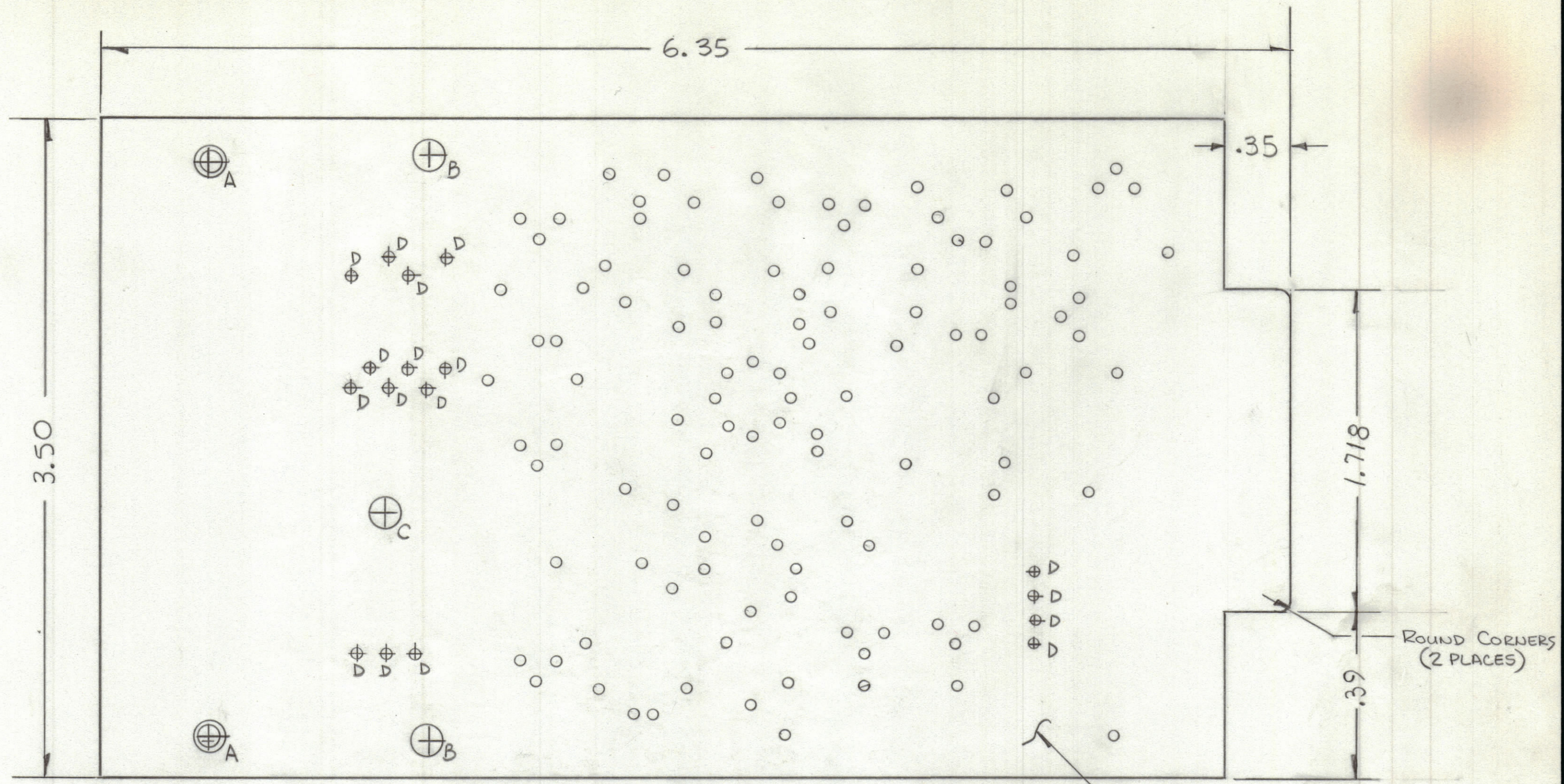


REVISIONS						
ZONE	LTR	DESCRIPTION	DATE	E.M.NNO	DRAFT	CHKD APPD



Hole	Description	Req.
A	.156 DIA	2
B	.203 DIA	2
C	.171 DIA	1
D	.050 DIA	17
Unmarked	.042 DIA	115 APPROX

- FABRICATION NOTES:
- TO BE MANUFACTURED IN ACCORDANCE WITH TMC SPEC S735 AND SPECIFICALLY
  - OVERALL MATERIAL THICKNESS .062±.006 AS PER (pp3.1,3.2)
  - CONDUCTOR PATTERN TO BE COPPER FOIL AS PER (pp4.1), PLATING TO BE TIN LEAD AS PER (pp13.2.2,13.2.1)
  - MATERIAL TO BE G10 GLASS EPOXY, LAMINATE 2 OZ COPPER CLAD, (Double SIDE)
  - EDGE BOARD CONNECTORS (FINGER) SHALL BE GOLD PLATED AS PER (pp 10)
  - ALL HOLES TO BE PLATED THRU AS PER (pp 8.9.5) UNLESS OTHERWISE SPECIFIED

QTY / UNIT	GPTR-1K/J2B	A5790
	MODEL USED ON	ASS'Y NO.
APPLICATION		
	CODE	
NOTICE TO PERSONS RECEIVING THIS DRAWING		
THE TECHNICAL MATERIEL CORPORATION claims proprietary right in the material disclosed hereon. This drawing is issued in confidence for engineering information only and may not be reproduced or used to manufacture anything shown hereon without permission from THE TECHNICAL MATERIEL CORPORATION to the user. This drawing is loaned for mutual assistance and is subject to recall at any time.		

UNLESS OTHERWISE SPECIFIED DIMENSIONS ARE IN INCHES AND INCLUDE CHEMICALLY APPLIED OR PLATED FINISHES	
TOLERANCES ON	
DECIMALS	FRACTIONS
.X ± .05	± 1/64
.XX ± .01	ANGLES
.XXX ± .005	± 0° -30'
MATERIAL	
FINISH	

2	1	TE127-9	TERMINAL, STUD	
QTY. REQ.	ITEM	PART NO.	DESCRIPTION	SYMBOL
LIST OF MATERIAL				
FINAL APPROVAL			DATE	
MECH. DES.			DATE	
ELECT. DES.			DATE	
CHECKED			DATE	
DRAWN			DATE	
THE TECHNICAL MATERIEL CORP. MAMARONECK, NEW YORK				
PRINTED CIRCUIT Bd. (CONTROL CIRCUIT)				
SIZE	CODE IDENT.NO	DWG NO.	ISSUE	
C	82679	PC823	XI	
SCALE			SHEET	OF