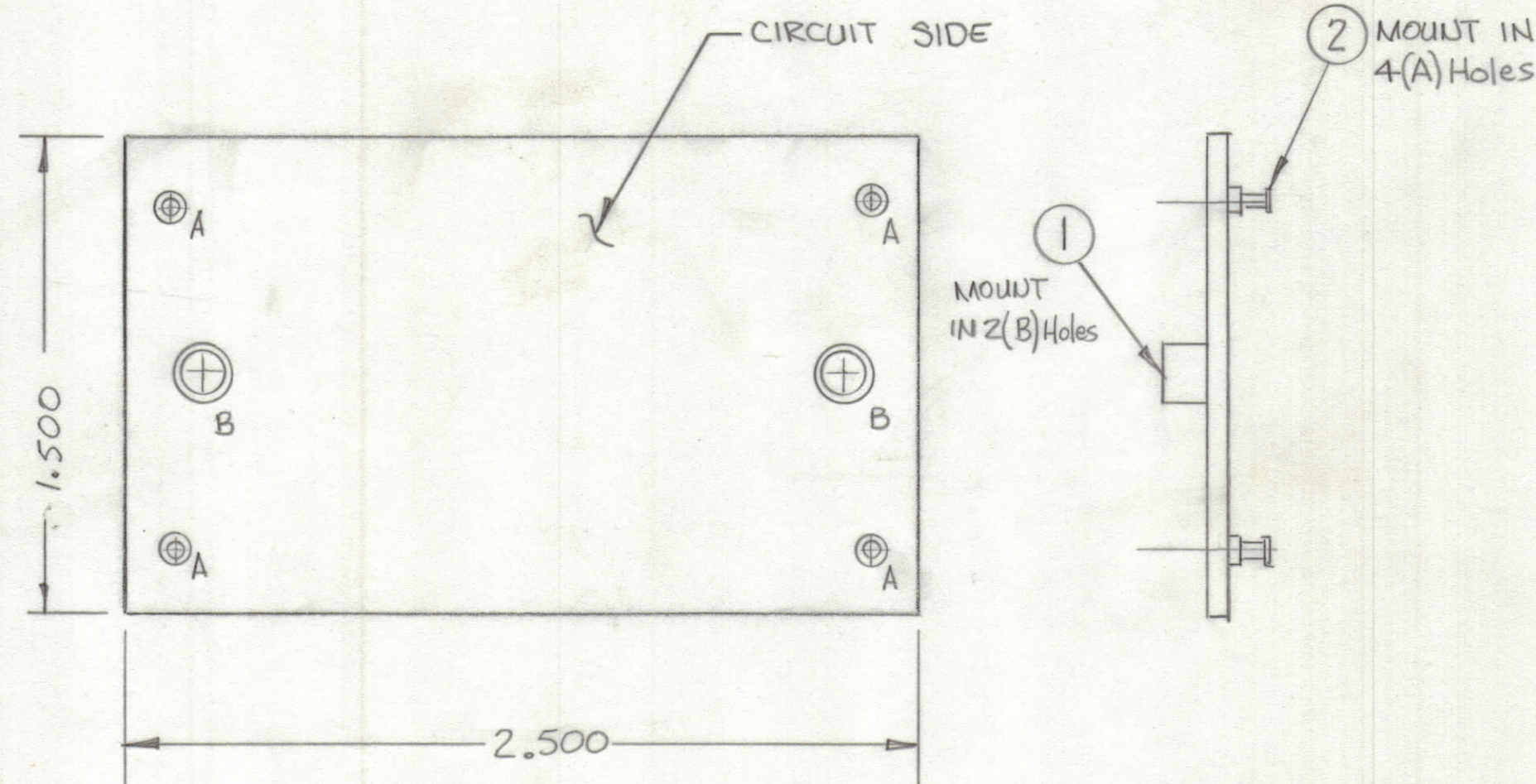


REVISIONS							
ZONE	LTR	DESCRIPTION	DATE	E.M.N.NO	DRAFT	CHKD	APPD
	Ø	ORIGINAL RELEASE FOR PRODUCTION	3 6 80	7	MAC		EB



NOTES:
 FABRICATION NOTES (SEE 5735)
 1. OVERALL MATERIAL THICKNESS .062 ± .006 AS PER PP3.1, 3.2
 2. CONDUCTOR PATTERN TO BE COPPER FOIL AS PER PP4.1.
 3. MATERIAL: G10 GLASS EPOXY LAMINATE 2 OZ COPPER CLAD, (ONE(1) SIDE)

Hole	Description	Req
A	.081 DIA	4
B	.189 DIA	2
	Unmarked .042 DIA	12

QTY. REQ.	ITEM	PART NO.	DESCRIPTION	SYMBOL
4	2	TE127-2	Terminal Stud	A
2	1	TE164-1	NUT, PLAIN, CLINCH	B

LIST OF MATERIAL

UNLESS OTHERWISE SPECIFIED DIMENSIONS ARE IN INCHES AND INCLUDE CHEMICALLY APPLIED OR PLATED FINISHES

TOLERANCES ON
 DECIMALS .X ± .05
 .XX ± .01
 .XXX ± .005
 FRACTIONS ± 1/64
 ANGLES ± 0° .30'

FINAL APPROVAL *[Signature]* DATE
 MECH. DES. DATE
 ELECT. DES. DATE
 CHECKED DATE
 DRAWN DATE

THE TECHNICAL MATERIEL CORP.
 MAMARONECK, NEW YORK

PRINTED CIRCUIT Bd.
 RF FILTER

SIZE	CODE IDENT.NO.	DWG NO.	ISSUE
C	82679	PC 818	Ø

SCALE SHEET OF

1	AMC-8A	A5780
1	AMC-32A	A5780
QTY / UNIT	MODEL USED ON	ASS'Y NO.
APPLICATION		
CODE		
NOTICE TO PERSONS RECEIVING THIS DRAWING		
THE TECHNICAL MATERIEL CORPORATION claims proprietary right in the material disclosed hereon. This drawing is issued in confidence for engineering information only and may not be reproduced or used to manufacture anything shown hereon without permission from THE TECHNICAL MATERIEL CORPORATION to the user. This drawing is loaned for mutual assistance and is subject to recall at any time.		
MATERIAL		
FINISH		

PC 818
 Ø