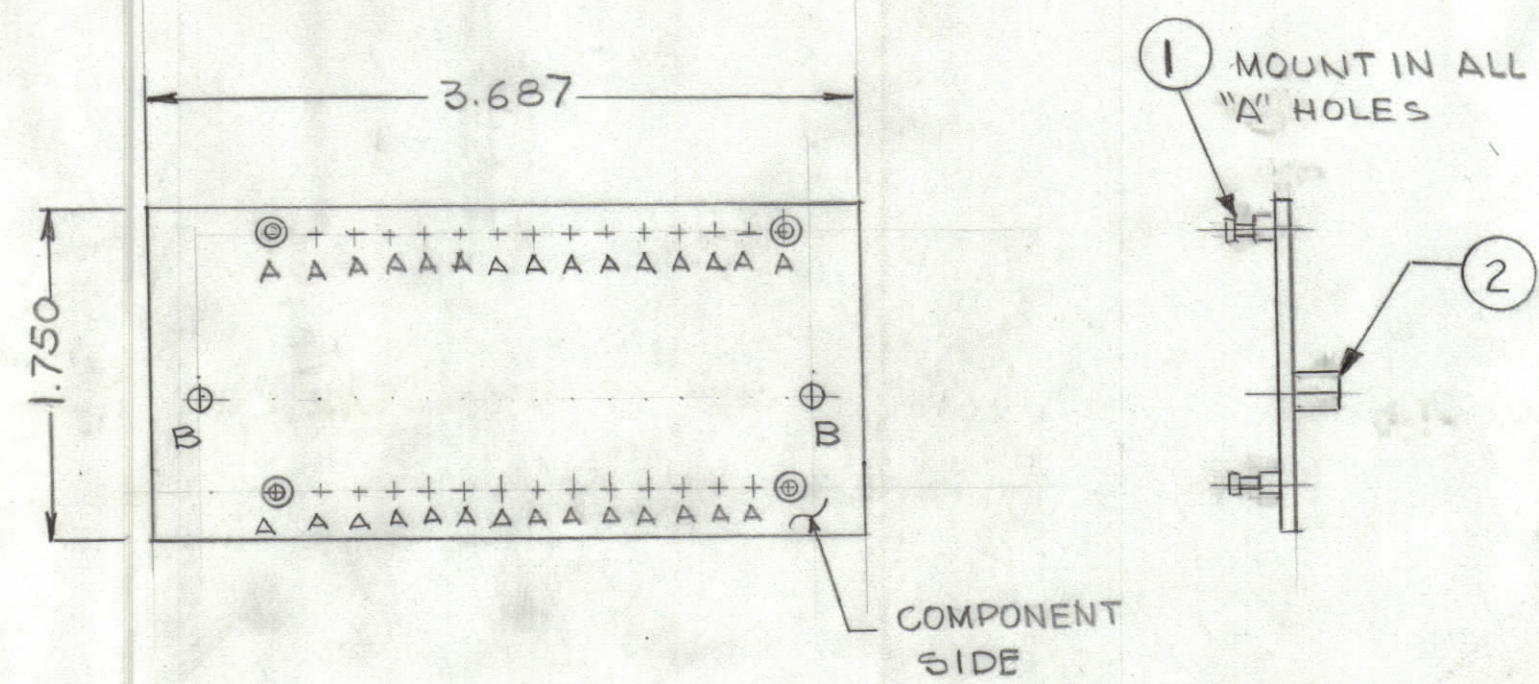


REVISIONS						
ZONE	LTR	DESCRIPTION	DATE	E.M.N.NO	DRAFT	CHKD APPD
	Ø	ORIGINAL RELEASE FOR PRODUCTION	9-17-79	#	MAC	FB

HOLE	DESCRIPTION	REQ
A	.081 DIA	30
B	.189 DIA	2
	UNMARKED .042	



NOTES:
 1-OVERALL MATERIAL THICKNESS .062±.006 AS PER PP 3-1, 3.2
 2-CONDUCTOR PATTERN TO BE COPPER FOIL AS PER PP 4.1,
 PLATING TO BE TIN LEAD AS PER PPI 3.2, 13.1
 3-MATERIAL: GIO GLASS EPOXY LAMINATE 202 COPPER

(REF CK2214)

QTY. REQ.	ITEM	PART NO.	DESCRIPTION	SYMBOL
2	Z	TE108-1	STAUFFOFF	B
30	I	TE127-2	TERMINAL STUD	A

LIST OF MATERIAL
 THE TECHNICAL MATERIEL CORP.
 MAMARONECK, NEW YORK

PRINTED CIRCUIT BD
 (DECOUPLING)

UNLESS OTHERWISE SPECIFIED DIMENSIONS ARE IN INCHES AND INCLUDE CHEMICALLY APPLIED OR PLATED FINISHES		FINAL APPROVAL	DATE
TOLERANCES ON		MECH. DES.	DATE
DECIMALS	FRACTIONS	ELECT. DES.	DATE
.X ± .05	± 1/64	CHECKED	DATE
.XX ± .01	ANGLES	DRAWN	DATE
.XXX ± .005	± 0° -30'	GDL	1-5-79

1	LFE-2A (MFT-10K/S)	AX5248
QTY / UNIT	MODEL USED ON	ASS'Y NO.
APPLICATION		
CODE		

NOTICE TO PERSONS RECEIVING THIS DRAWING
 THE TECHNICAL MATERIEL CORPORATION claims proprietary right in the material disclosed hereon. This drawing is issued in confidence for engineering information only and may not be reproduced or used to manufacture anything shown hereon without permission from THE TECHNICAL MATERIEL CORPORATION to the user. This drawing is loaned for mutual assistance and is subject to recall at any time.

SIZE	CODE IDENT.NO.	DWG NO.	ISSUE
C	82679	PC812	Ø
SCALE	SHEET		OF