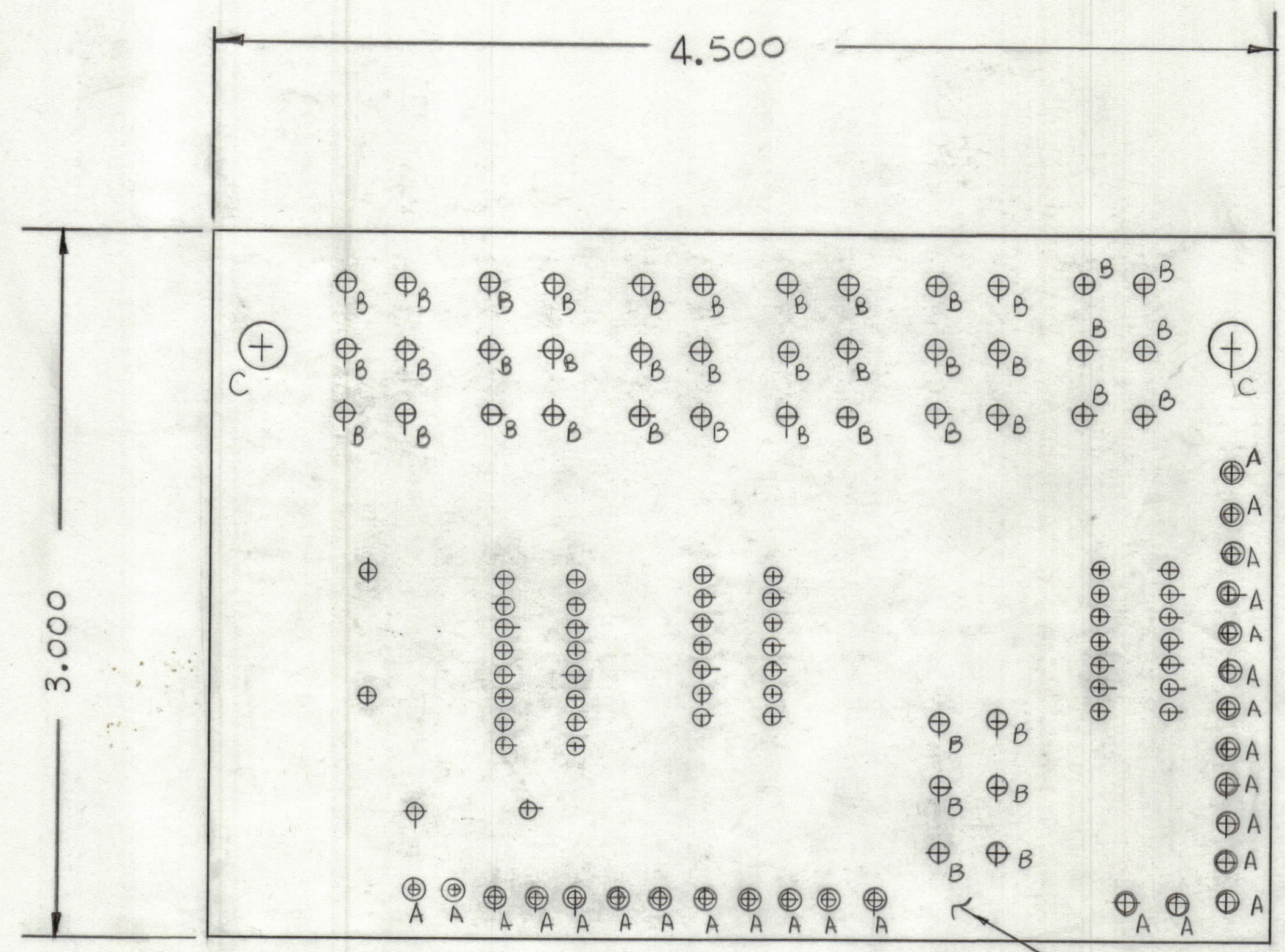


REVISIONS						
ZONE	LTR	DESCRIPTION	DATE	E.M.N.NO	DRAFT	CHKD APPD
	Ø	ORIGINAL Release for Production	8-14-81	~	llb	



FABRICATION NOTES:  
 TO BE MANUFACTURED IN ACCORDANCE WITH TMC SPEC S735 AND SPECIFICALLY  
 1. OVERALL MATERIAL THICKNESS .062±.006 AS PER (pp3.1,3.2)  
 2. CONDUCTOR PATTERN TO BE COPPER FOIL AS PER (pp4.1), PLATING TO BE TIN LEAD AS PER (pp13.2.2,13.2.1)  
 3. MATERIAL TO BE G10 GLASS EPOXY, LAMINATE 2 OZ COPPER CLAD,  
 4. All holes to be plated Thru as per (pp8.5)

Hole	Description	Reqd
A	.081 DIA	26
B	.070 DIA	42
C	11/64 DIA	2
UNMARKED Holes .042 DIA		

SCALE 2:1

CIRCUIT SIDE

QTY. REQ.	ITEM	PART NO.	DESCRIPTION	SYMBOL
26	1	TE127-2	TERMINAL STUD	A

LIST OF MATERIAL			
THE TECHNICAL MATERIEL CORP. MAMARONECK, NEW YORK			
PRINTED CIRCUIT BO. CARR. SUP. SWITCHING			
SIZE	CODE IDENT. NO.	DWG NO.	ISSUE
C	82679	PC788	Ø
SCALE			SHEET OF

1	RCST-1 (AX5223)	A5725
QTY / UNIT	MODEL USED ON	ASS'Y NO.
APPLICATION		
CODE		
NOTICE TO PERSONS RECEIVING THIS DRAWING		
<small>THE TECHNICAL MATERIEL CORPORATION claims proprietary right in the material disclosed hereon. This drawing is issued in confidence for engineering information only and may not be reproduced or used to manufacture anything shown hereon without permission from THE TECHNICAL MATERIEL CORPORATION to the user. This drawing is loaned for mutual assistance and is subject to recall at any time.</small>		

UNLESS OTHERWISE SPECIFIED DIMENSIONS ARE IN INCHES AND INCLUDE CHEMICALLY APPLIED OR PLATED FINISHES		FINAL APPROVAL	DATE
TOLERANCES ON		MECH. DES.	DATE
DECIMALS	FRACTIONS	ELECT. DES.	DATE
.X ± .05	± 1/64	CHECKED	DATE
.XX ± .01	ANGLES	DRAWN	DATE
.XXX ± .005	± 0° -30'		
MATERIAL			
FINISH			