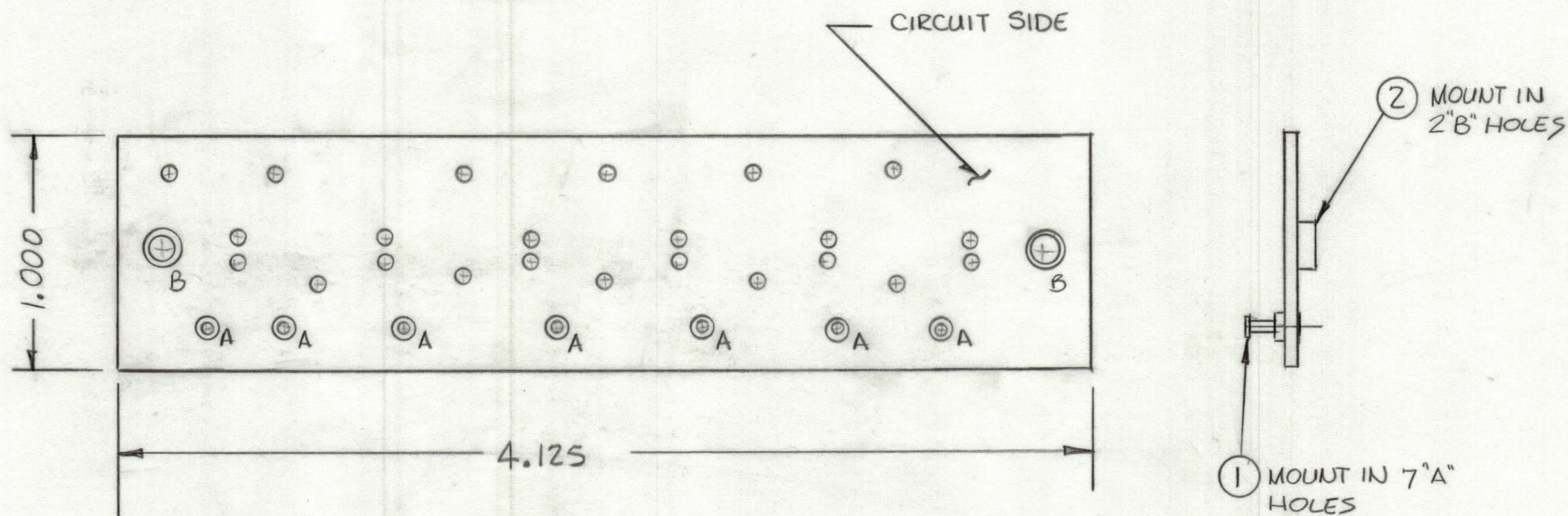


REVISIONS						
ZONE	LTR	DESCRIPTION	DATE	E.M.N.NO	DRAFT	CHKD APPD
	Ø	ORIGINAL RELEASE for PRODUCTION	8-16-81			

FABRICATION NOTES:
 TO BE MANUFACTURED IN ACCORDANCE WITH TMC SPEC S735 AND SPECIFICALLY
 1. OVERALL MATERIAL THICKNESS .062±.006 AS PER (pp3.1,3.2)
 2. CONDUCTOR PATTERN TO BE COPPER FOIL AS PER (pp4.1), PLATING TO BE TIN LEAD AS PER (pp13.2.2,13.2.1)
 3. MATERIAL TO BE G10 GLASS EPOXY, LAMINATE 2 OZ COPPER CLAD,
 4. ~~EDGE BOARD CONNECTOR (FINDER) SHALL BE COND PLATED AS PER (p. 10)~~
 5. ALL HOLES TO BE PLATED THRU AS PER (pp 8.9.5) UNLESS OTHERWISE SPECIFIED



Hole	Description	REQ
A	.081 DIA	7
B	.189 DIA	2
UNMARKED HOLE .053 DIA.		

SCALE 2:1

QTY. REQ.	ITEM	PART NO.	DESCRIPTION	SYMBOL
2	2	TE164	TERMINAL STANDOFF	B
7	1	TE127-2	TERMINAL STUD	A

LIST OF MATERIAL

UNLESS OTHERWISE SPECIFIED DIMENSIONS ARE IN INCHES AND INCLUDE CHEMICALLY APPLIED OR PLATED FINISHES		FINAL APPROVAL	DATE	THE TECHNICAL MATERIEL CORP. MAMARONECK, NEW YORK PRINTED CIRCUIT BD. (INDICATORS)			
TOLERANCES ON		MECH. DES.	DATE				
DECIMALS		ELECT. DES.	DATE				
FRACTIONS		CHECKED	DATE				
.X ± .05		DRAWN	DATE	SIZE	CODE IDENT. NO.	DWG NO.	ISSUE
.XX ± .01				C	82679	PC78.3	Ø
.XXX ± .005				SCALE		SHEET	OF
ANGLES ± 0° -30'							
MATERIAL							
FINISH							

1	RCST-1	AS720
QTY / UNIT	MODEL USED ON	ASS'Y NO.
APPLICATION		
CODE		
NOTICE TO PERSONS RECEIVING THIS DRAWING THE TECHNICAL MATERIEL CORPORATION claims proprietary right in the material disclosed hereon. This drawing is issued in confidence for engineering information only and may not be reproduced or used to manufacture anything shown hereon without permission from THE TECHNICAL MATERIEL CORPORATION to the user. This drawing is loaned for mutual assistance and is subject to recall at any time.		