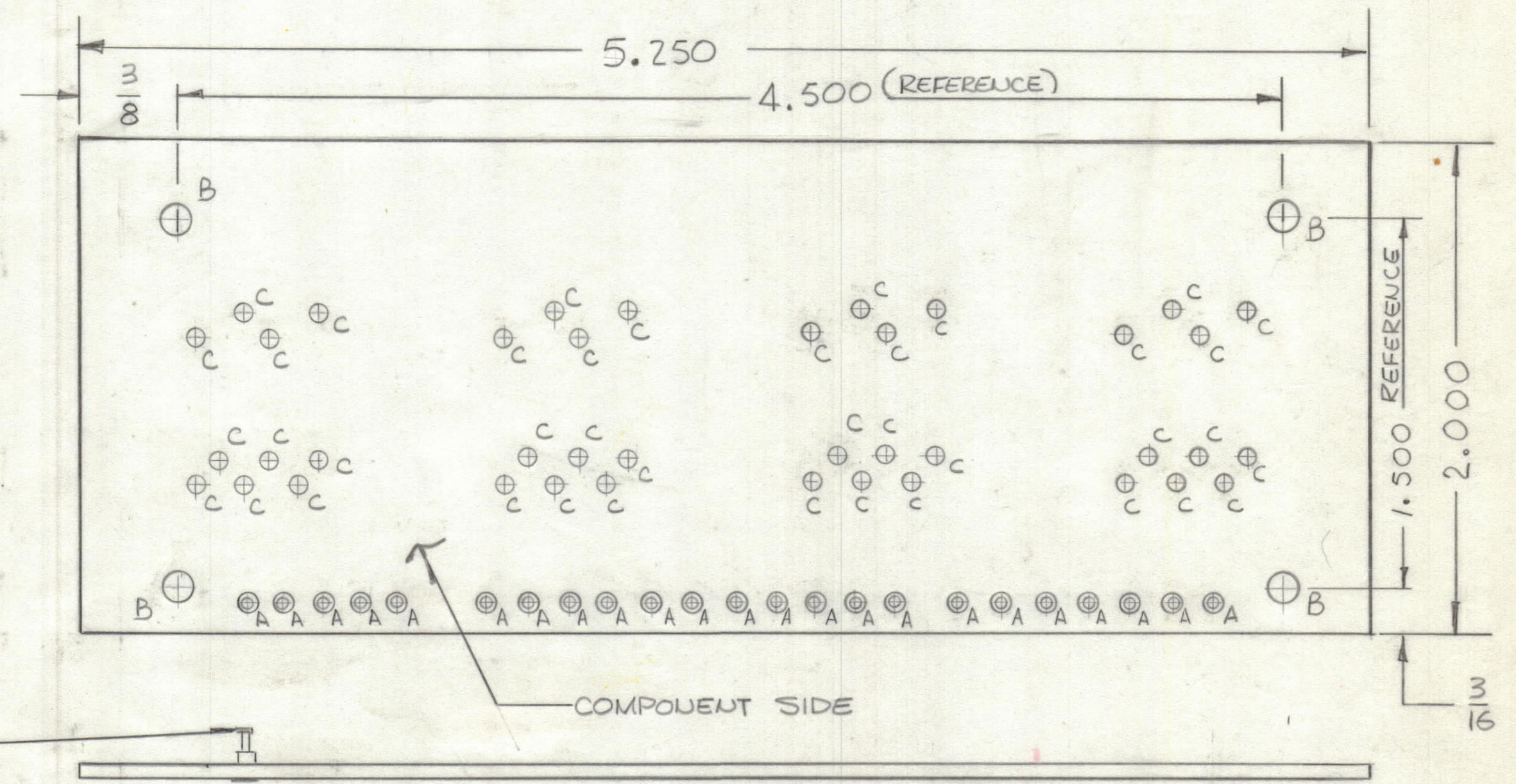


REVISIONS						
ZONE	LTR	DESCRIPTION	DATE	E.M.N.NO	DRAFT	CHKD APPD
	Ø	ORIG RELEASE	4/13/78		ES	FB



NOTES:  
 FABRICATION NOTES SEE S735  
 1. OVERALL MATERIAL THICKNESS .062±.006 AS PER PP3.1, 3.2.  
 2. CONDUCTOR PATTERN TO BE COPPER FOIL AS PER PP4.1. PLATING TO BE TIN LEAD AS PER PP13.2.2, 13.2.1.  
 3. MATERIAL: GIO GLASS EPOXY LAMINATE 2 OZ COPPER CLAD.

HOLE	DESCRIPTION	REQ
A	.081 DIA	23
B	9/64 DIA	4
C	.050	40
UNMARKED HOLES .042 DIA		

QTY. REQ.	ITEM	PART NO.	DESCRIPTION	SYMBOL
23	1	TEI27-2	TERMINAL, STUD	A

LIST OF MATERIAL

**THE TECHNICAL MATERIEL CORP.**  
 MAMARONECK, NEW YORK

PRINTED CIRCUIT Bd.  
 (RELAY CONTROLS)

QTY / UNIT	MODEL USED ON	ASS'Y NO.
1	AX 5231	A5715
APPLICATION		
	CODE	

UNLESS OTHERWISE SPECIFIED DIMENSIONS ARE IN INCHES AND INCLUDE CHEMICALLY APPLIED OR PLATED FINISHES	FINAL APPROVAL <i>[Signature]</i>	DATE 4/4/78
TOLERANCES ON DECIMALS .X ± .05 .XX ± .01 .XXX ± .005 FRACTIONS ± 1/64 ANGLES ± 0° -30'	MECH. DES. <i>[Signature]</i>	DATE 10-5-77
	ELECT. DES.	DATE
	CHECKED	DATE
	DRAWN <i>[Signature]</i>	DATE 10-5-77

NOTICE TO PERSONS RECEIVING THIS DRAWING  
 THE TECHNICAL MATERIEL CORPORATION claims proprietary right in the material disclosed hereon. This drawing is issued in confidence for engineering information only and may not be reproduced or used to manufacture anything shown hereon without permission from THE TECHNICAL MATERIEL CORPORATION to the user. This drawing is loaned for mutual assistance and is subject to recall at any time.

SIZE	CODE IDENT.NO.	DWG NO.	ISSUE
C	82679	PC779	Ø
SCALE	SHEET		OF