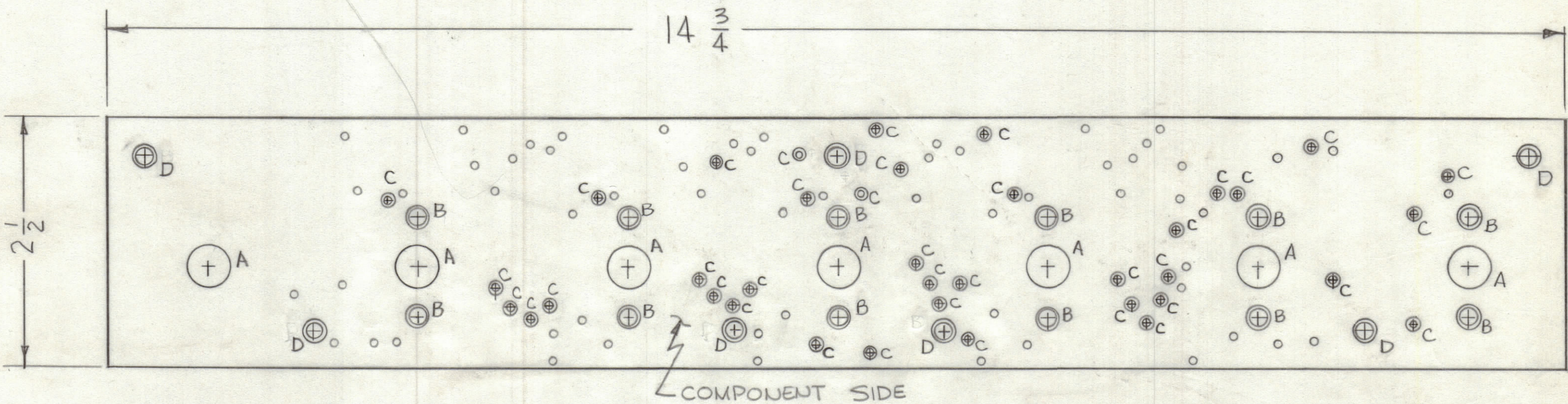
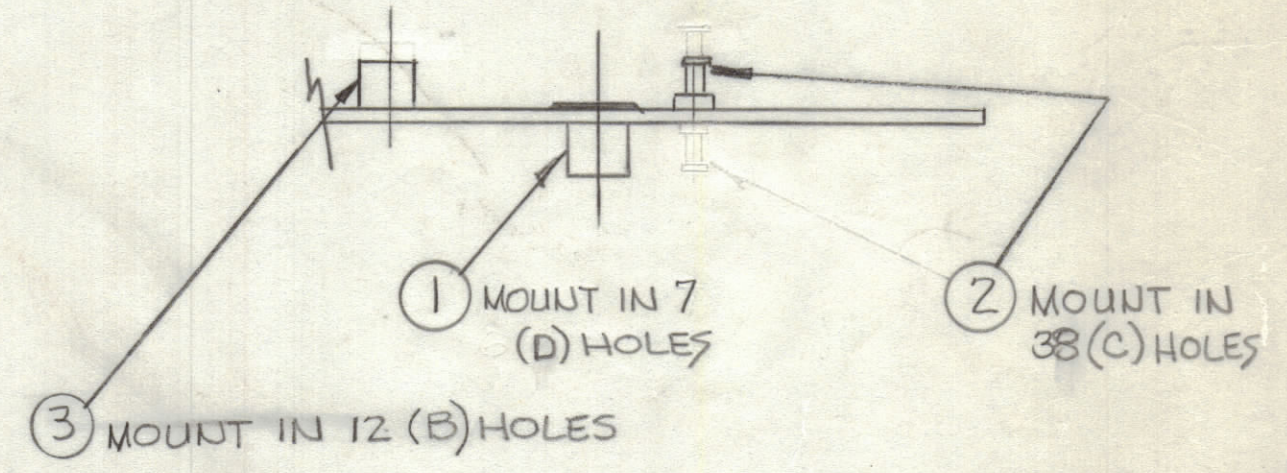


REVISIONS						
ZONE	LTR	DESCRIPTION	DATE	E.M.N.NO	DRAFT	CHKD APPD
	X1	DD Hole Added, SPACING REVISED	12-5-77		PH	
	X2	REV ITEMS 1 AND 3 (MADE SHORTER)	1-11-78		PH	
	Ø	ORIGINAL RELEASE FOR PRODUCTION	6-5-78		RU	WJB *



NOTE
 FABRICATION NOTES SEE S735
 1. OVERALL MATERIAL THICKNESS .092 ± .006 AS PER PP3.1, 3.2.
 2. CONDUCTOR PATTERN TO BE COPPER FOIL AS PER PP4.1.
 3. PLATING TO BE TIN LEAD AS PER PP13.2.2, 13.2.1
 4. MATERIAL: GIO GLASS EPOXY LAMINATE 2 OZ COPPER CLAD.
 5. ALL HOLES TO BE PLATED-THRU AS PER 8.9.5.

Hole	Description	Req
A	7/16 DIA	7
B	.189 DIA	12
C	.081 DIA	38
D	.189 DIA	7
UNMARKED HOLES .042 DIA		



12	3	TE164-18	NUT PLAIN CLINCH	B
38	2	TE127-3	TERMINAL MINATURE	C
7	1	TE164-18	NUT PLAIN CLINCH	D

QTY. REQ.	ITEM	PART NO.	DESCRIPTION	SYMBOL
-----------	------	----------	-------------	--------

LIST OF MATERIAL

UNLESS OTHERWISE SPECIFIED DIMENSIONS ARE IN INCHES AND INCLUDE CHEMICALLY APPLIED OR PLATED FINISHES		FINAL APPROVAL * <i>WJB</i>	DATE 8/2/78
TOLERANCES ON		MECH. DES. <i>WJB</i>	DATE 8-29-77
DECIMALS	FRACTIONS	ELECT. DES.	DATE
.X ± .05	± 1/64	CHECKED <i>WJB</i>	DATE 12/6/77
.XX ± .01	ANGLES	DRAWN <i>WJB</i>	DATE 8-29-77
.XXX ± .005	± 0° -30'		

THE TECHNICAL MATERIEL CORP.
 MAMARONECK, NEW YORK

PRINTED CIRCUIT Bd.,
 RF SWITCHING

1	MMX-ZB	A5713
QTY / UNIT	MODEL USED ON	ASS'Y NO.
APPLICATION		
CODE		

NOTICE TO PERSONS RECEIVING THIS DRAWING
 THE TECHNICAL MATERIEL CORPORATION claims proprietary right in the material disclosed hereon. This drawing is issued in confidence for engineering information only and may not be reproduced or used to manufacture anything shown hereon without permission from THE TECHNICAL MATERIEL CORPORATION to the user. This drawing is loaned for mutual assistance and is subject to recall at any time.

SIZE	CODE IDENT. NO.	DWG NO.	ISSUE
C	82679	PC777	Ø
SCALE	SHEET		OF