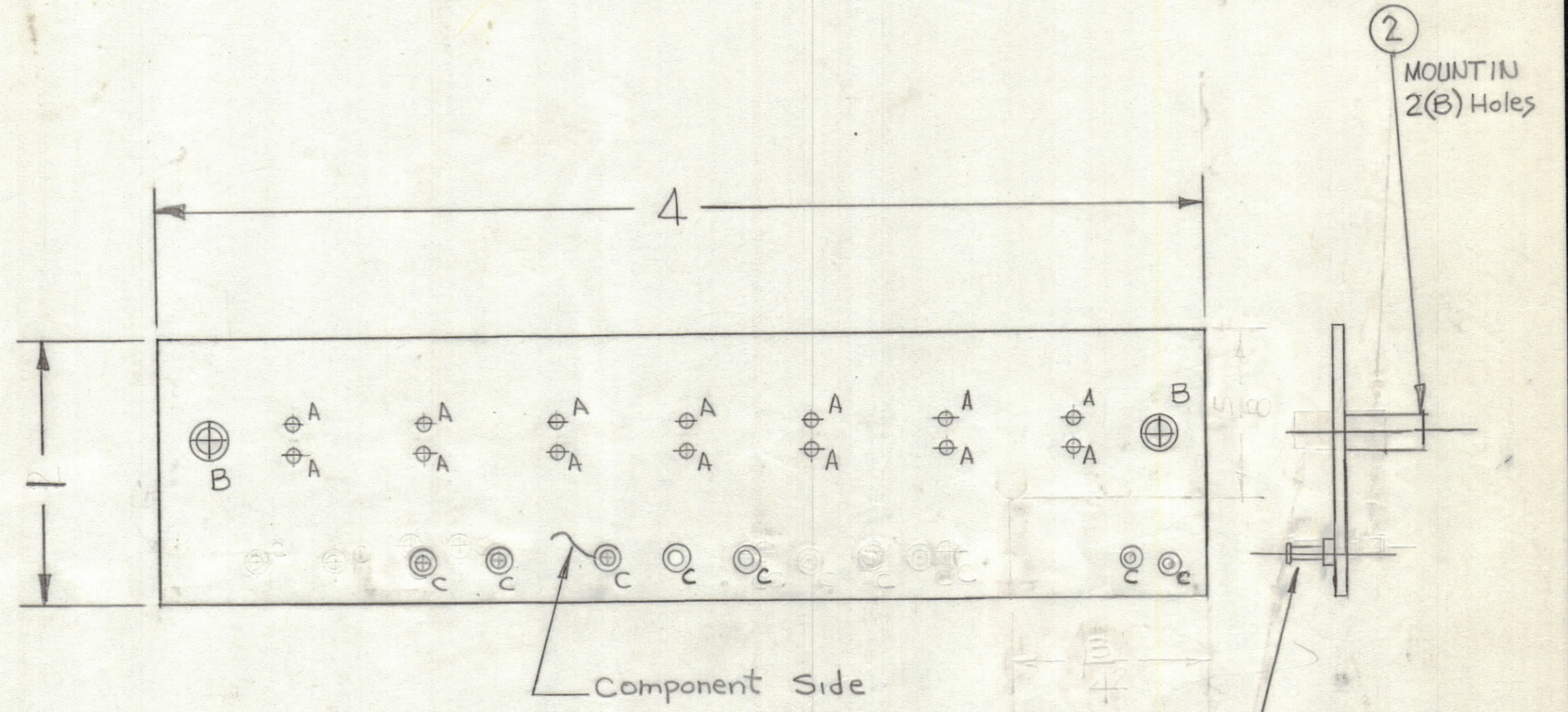


REVISIONS						
ZONE	LTR	DESCRIPTION	DATE	E.M.N.NO	DRAFT	CHKD APPD
	X1	COMPLETELY REDESIGNED	9-30-77		<i>[Signature]</i>	
	X2	ARTWORK REVISED	10-25-77		<i>[Signature]</i>	
	X3	ARTWORK COMPLETELY REVISED	1-23-78		<i>[Signature]</i>	
	Ø	ORIGINAL RELEASE FOR PRODUCTION	6-3-78		RU	WB *
	A	PINS 15E16 Conn. 13#14 Conn to GND	7-23-81	21887	<i>[Signature]</i>	



NOTE:
 FABRICATION NOTES SEE S735
 1. OVERALL MATERIAL THICKNESS .062 ± .006 AS PER pp 3.1, 3.2.
 2. CONDUCTOR PATTERN TO BE COPPER FOIL AS PER pp 4.1. PLATING TO BE TIN LEAD AS PER pp 13.2.2, 13.2.1.
 3. MATERIAL: GIO GLASS EPOXY LAMINATE 2 OZ COPPER CLAD.
 4. ALL HOLES TO BE PLATED-THRU AS PER (pp 8.9.5).

Hole	Description	Req
A	.055 DIA	14
B	.189 DIA	2
C	.081 DIA	7
UNMARKED Holes .042D.		

QTY. REQ.	ITEM	PART NO.	DESCRIPTION	SYMBOL
2	Z	TE164-11	NUT, PLAIN, CLINCH	B
7	I	TE127-2	TERMINAL, STUD	C

LIST OF MATERIAL

THE TECHNICAL MATERIEL CORP.
 MAMARONECK, NEW YORK

**PRINTED CIRCUIT BD.,
 INDICATORS**

SIZE	CODE IDENT. NO.	DWG NO.	ISSUE
C	82679	PC774	A

SCALE SHEET OF

1	MMXC)-2B	A5710
QTY / UNIT	MODEL USED ON	ASS'Y NO.
APPLICATION		
	CODE	
<small>NOTICE TO PERSONS RECEIVING THIS DRAWING</small> <small>THE TECHNICAL MATERIEL CORPORATION claims proprietary right in the material disclosed hereon. This drawing is issued in confidence for engineering information only and may not be reproduced or used to manufacture anything shown hereon without permission from THE TECHNICAL MATERIEL CORPORATION to the user. This drawing is loaned for mutual assistance and is subject to recall at any time.</small>		
MATERIAL		
FINISH		

UNLESS OTHERWISE SPECIFIED DIMENSIONS ARE IN INCHES AND INCLUDE CHEMICALLY APPLIED OR PLATED FINISHES

TOLERANCES ON

DECIMALS	FRACTIONS
.X ± .05	± 1/64
.XX ± .01	ANGLES
.XXX ± .005	± 0° -30'

FINAL APPROVAL	DATE
* <i>[Signature]</i>	6/2/78
MECH. DES.	DATE
<i>[Signature]</i>	8-15-77
ELECT. DES.	DATE
CHECKED	DATE
<i>[Signature]</i>	12/4/77
DRAWN	DATE
<i>[Signature]</i>	8-15-77