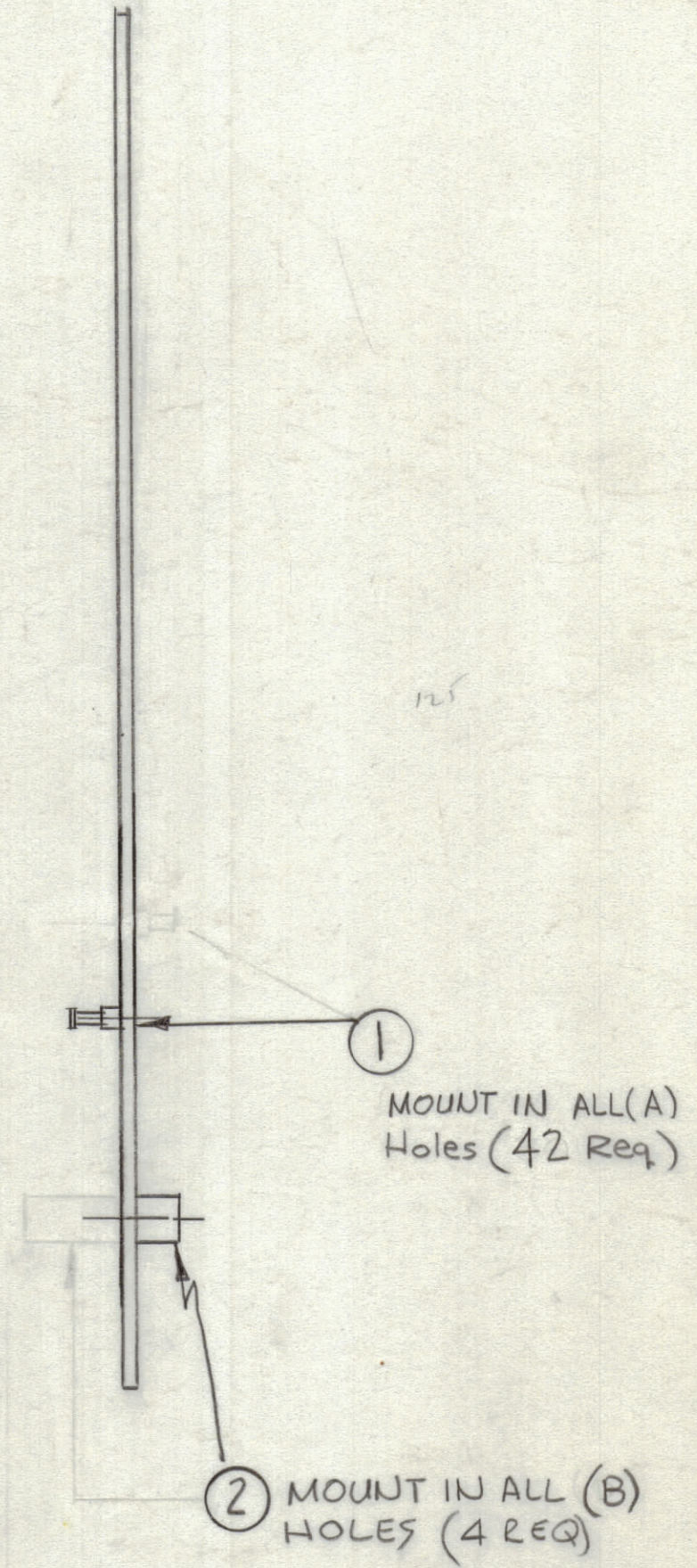
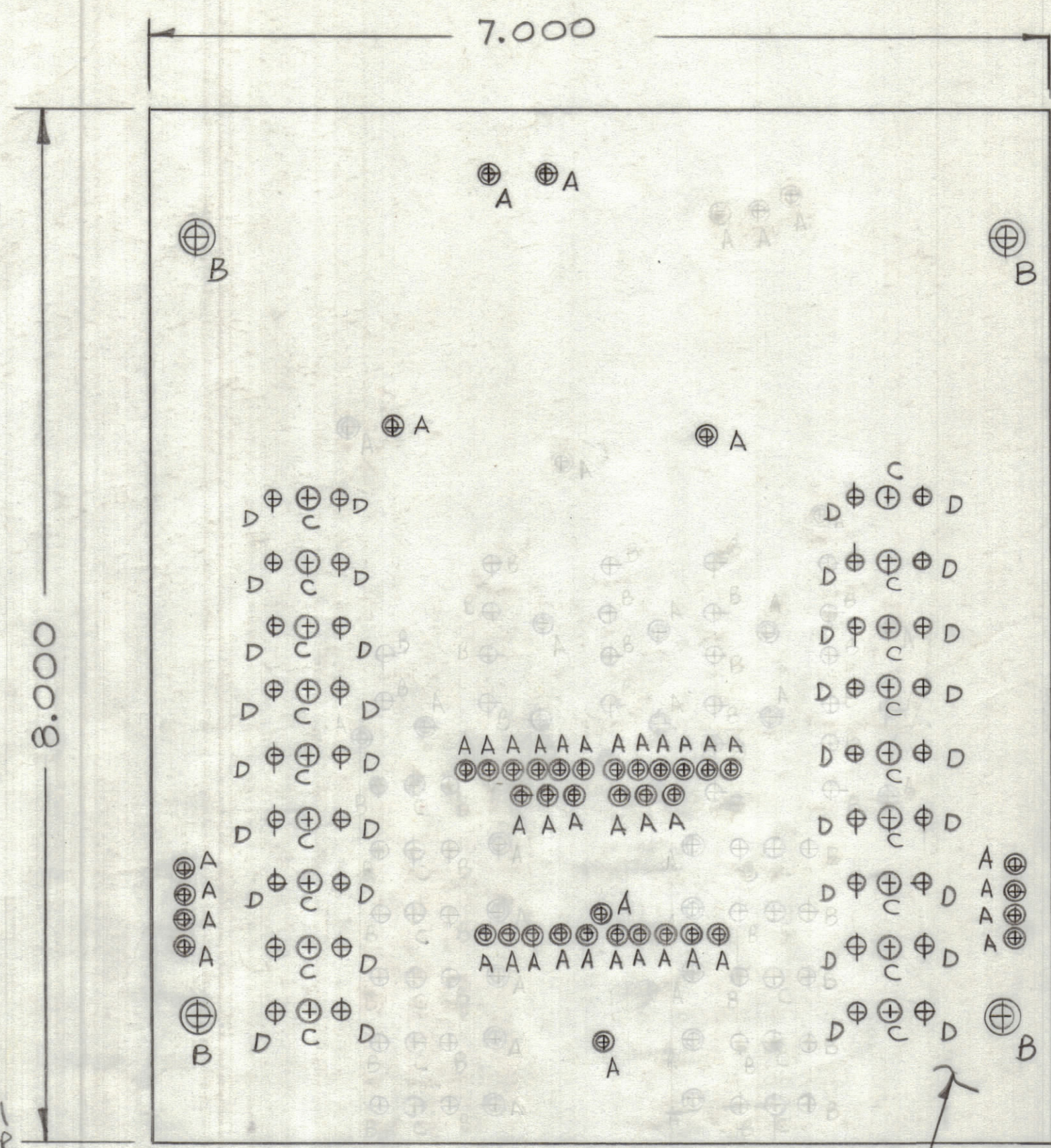


REVISIONS						
ZONE	LTR	DESCRIPTION	DATE	E.M.N.NO	DRAFT	CHKD APPD
	X	ARTWORK Was Rush (Full Scale)	3-22-77			
	X1	ARTWORK SCALE 2:1, Revised	6-29-77			

ARTWORK MADE TO FULL SCALE  
1:1 - Do Not Reduce

NOTE  
1. OVERALL MATERIAL THICKNESS .062 ± .006 AS PER PP 3.1, 3.2  
2. CONDUCTOR PATTERN TO BE COPPER FOIL AS PER PP 4.1, PLATING TO BE TIN LEAD AS PER PP 13.2, 13.1  
3. MATERIAL: GIO GLASS EPOXY LAMINATE 2 OZ COPPER CLAD.



Hole	Description	Req.
A	.081 DIA	42
B	.189 DIA	4
C	5/32 DIA	18
D	.093 DIA	36
	UNMARKED	.042

QTY. REQ.	ITEM	PART NO.	DESCRIPTION	SYMBOL
4	Z	TE108-1	TERMINAL, STADOFF	B
42	1	TE127-2	TERMINAL, STUD	A

LIST OF MATERIAL

1	AX5222 (KIT424)	A5663
QTY / UNIT	MODEL USED ON	ASS'Y NO.
APPLICATION		
CODE		

NOTICE TO PERSONS RECEIVING THIS DRAWING  
THE TECHNICAL MATERIEL CORPORATION claims proprietary right in the material disclosed hereon. This drawing is issued in confidence for engineering information only and may not be reproduced or used to manufacture anything shown hereon without permission from THE TECHNICAL MATERIEL CORPORATION to the user. This drawing is loaned for mutual assistance and is subject to recall at any time.

UNLESS OTHERWISE SPECIFIED DIMENSIONS ARE IN INCHES AND INCLUDE CHEMICALLY APPLIED OR PLATED FINISHES		FINAL APPROVAL F. B.	DATE 3-22-77
TOLERANCES ON		MECH. DES. R. U. W.	DATE 3-22-77
DECIMALS .X ± .05 .XX ± .01 .XXX ± .005	FRACTIONS ± 1/64 ANGLES ± 0° -30'	ELECT. DES.	DATE
MATERIAL		CHECKED	DATE
FINISH		DRAWN R. U. W.	DATE 3-22-77

THE TECHNICAL MATERIEL CORP. MAMARONECK, NEW YORK			
PRINTED CIRCUIT BD 1 KHz SWITCHING			
SIZE	CODE IDENT. NO.	DWG NO.	ISSUE
C	82679	PC760	X1
SCALE		SHEET OF	