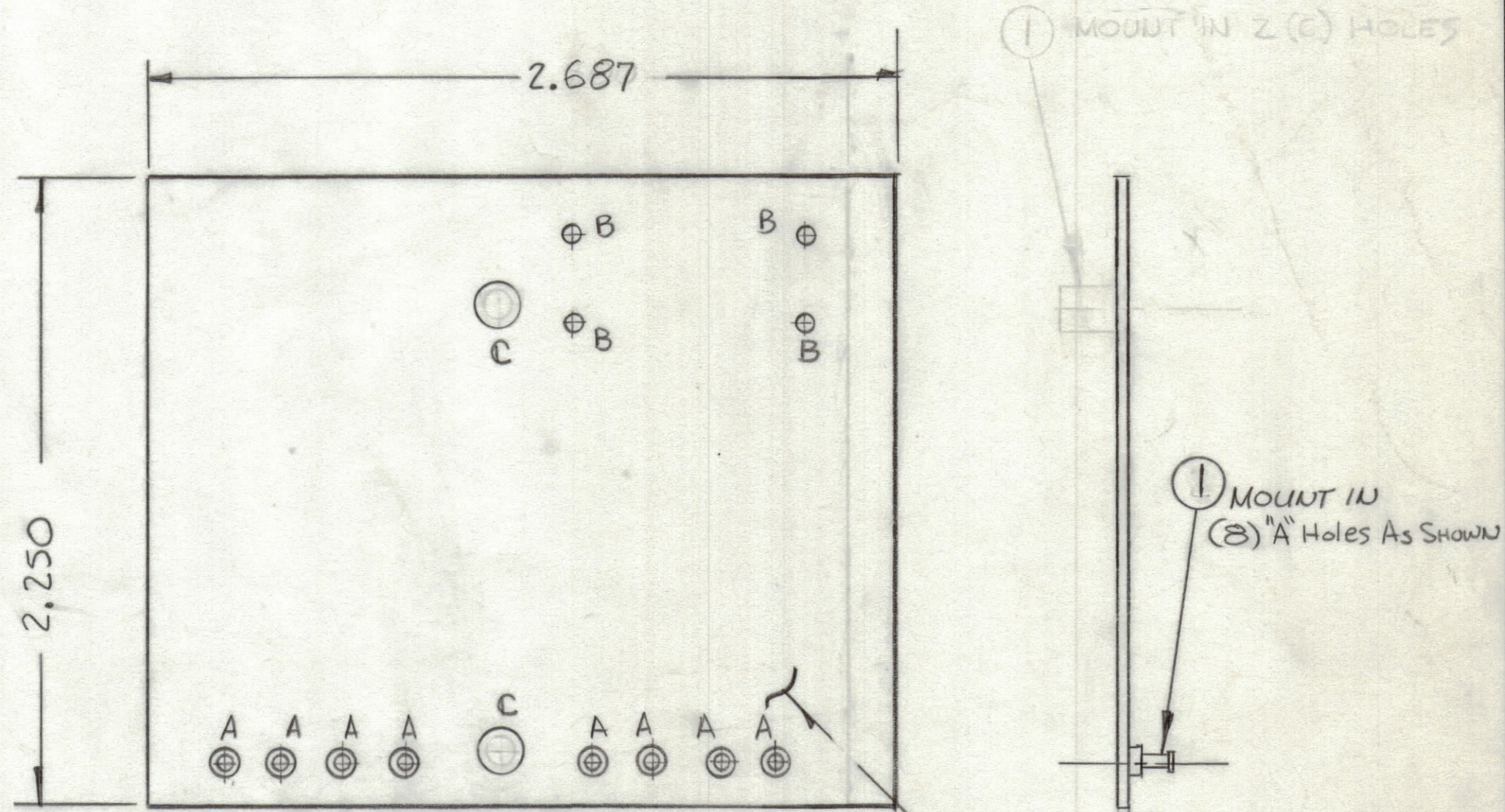


REVISIONS						
ZONE	LTR	DESCRIPTION	DATE	E.M.N.NO	DRAFT	CHKD APPD
	X1	TE108-1 IN(C) HOLES Deleted	11-4-76	—	<i>[Signature]</i>	
	A	DIODE CRS Added	2-28-77	—	<i>[Signature]</i>	*



THIS IS NOT ORIGINAL ARTWORK
THIS IS TO BE USED FOR REF ONLY

- TO BE MANUFACTURED IN ACCORDANCE WITH TMC SPEC S735
- OVERALL MATERIAL THICKNESS .062 ± .006 AS PER PP3.1, 3.2
 - CONDUCTOR PATTERN TO BE COPPER FOIL AS PER PP4.1.
PLATING TO BE TIN-LEAD AS PER 13.2.2, 13.2.1
 - MATERIAL: GIO GLASS EPOXY LAMINATE 2 OZ COPPER CLAD.

HOLE	DESCRIPTION	Req
A	.081 DIA	8
B	.062 DIA	4
C	13/64 DIA	2
UNMARKED HOLES .042 DIA		

QTY. REQ.	ITEM	PART NO.	DESCRIPTION	SYMBOL
8	1	TE127-Z	TERMINAL, STUD	A
2	1	TE108-1	STANDOFF	C

LIST OF MATERIAL

UNLESS OTHERWISE SPECIFIED DIMENSIONS ARE IN INCHES AND INCLUDE CHEMICALLY APPLIED OR PLATED FINISHES		FINAL APPROVAL <i>[Signature]</i>	DATE 3/1/77
TOLERANCES ON		MECH. DES. <i>[Signature]</i>	DATE 10-29-76
DECIMALS	FRACTIONS	ELECT. DES.	DATE
.X ± .05	± 1/64	CHECKED	DATE
.XX ± .01	ANGLES	DRAWN R U220	DATE 10-29-76
.XXX ± .005	± 0° -30'		

THE TECHNICAL MATERIEL CORP.
MAMARONECK, NEW YORK

PRINTED CIRCUIT Bd.
METER, OVLD ADJUST

SIZE	CODE IDENT.NO.	DWG NO.	ISSUE
C	82679	DC 753	A

SCALE SHEET OF

1	HFL100A	A5651
1	HFL100C	A5651
QTY / UNIT	MODEL USED ON	ASS'Y NO.
APPLICATION		
CODE		
NOTICE TO PERSONS RECEIVING THIS DRAWING THE TECHNICAL MATERIEL CORPORATION claims proprietary right in the material disclosed hereon. This drawing is issued in confidence for engineering information only and may not be reproduced or used to manufacture anything shown hereon without permission from THE TECHNICAL MATERIEL CORPORATION to the user. This drawing is loaned for mutual assistance and is subject to recall at any time.		
MATERIAL		
FINISH		