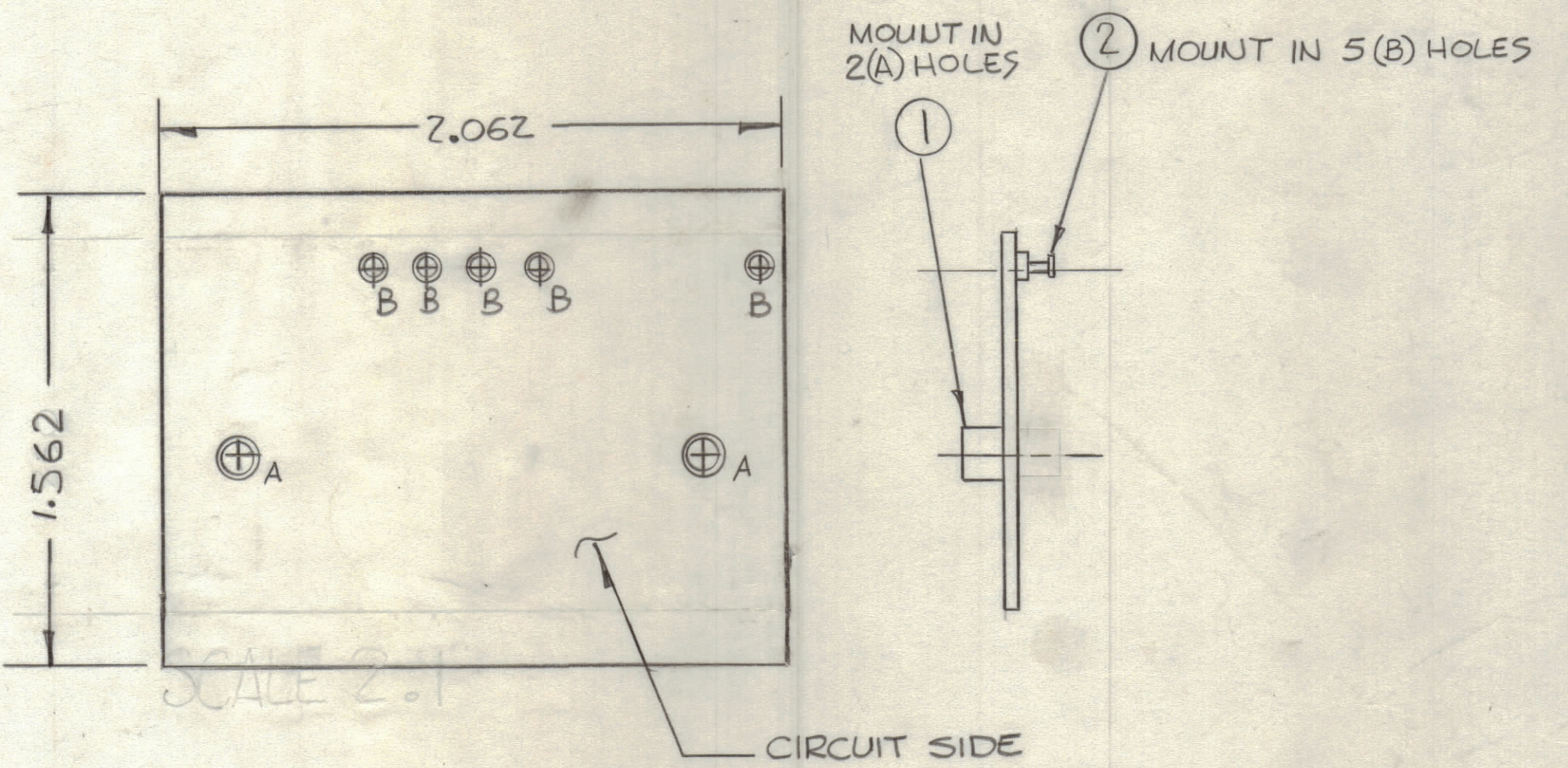


REVISIONS						
ZONE	LTR	DESCRIPTION	DATE	E.M.N.NO	DRAFT	CHKD APPD
	XI	REVISED				
	Ø	ORIGINAL RELEASE FOR PRODUCTION	5-13-77			W.B. +



THIS IS NOT ORIGINAL ARTWORK  
THIS IS TO BE USED FOR REF ONLY

- TO BE MANUFACTURED IN ACCORDANCE WITH TMC SPEC S735E SPECIFICALLY
1. OVERALL MATERIAL THICKNESS .062±.006 AS PER PP3.1, 3.2
  2. CONDUCTOR PATTERN TO BE COPPER FOIL AS PER PP4.1
  3. PLATING TO BETIN LEAD AS PER 13.2.2, 13.2.1
  4. MATERIAL: GIO GLASS EPOXY LAMINATE 2 OZ COPPER CLAD SINGLE SIDE

HOLE	DESCRIPTION	REQ
A	.189 DIA	2
B	.081 DIA	5
C	UNMARKED .042	

QTY. REQ.	ITEM	PART NO.	DESCRIPTION	SYMBOL
5	2	TE127-2	TERMINAL, STUD	B
2	1	TE164-1	TERMINAL, STUD	A

LIST OF MATERIAL

UNLESS OTHERWISE SPECIFIED DIMENSIONS ARE IN INCHES AND INCLUDE CHEMICALLY APPLIED OR PLATED FINISHES		FINAL APPROVAL <i>[Signature]</i>	DATE 5/10/77	<b>THE TECHNICAL MATERIEL CORP.</b> MAMARONECK, NEW YORK  <b>PRINTED CIRCUIT</b> <b>ALDC</b>
TOLERANCES ON		MECH. DES. <i>[Signature]</i>	DATE 10-14-76	
DECIMALS	FRACTIONS	ELECT. DES. <i>[Signature]</i>	DATE	
.X ± .05	± 1/64	CHECKED R UZZO	DATE 10-14-76	
.XX ± .01	ANGLES	DRAWN <i>[Signature]</i>	DATE 10-14-76	SIZE CODE IDENT. NO. DWG NO.
.XXX ± .005	± 0° -30'	MATERIAL		C 82679 PC750
FINISH		SCALE		ISSUE Ø
		SHEET		OF

TMA IKC	A5648
QTY. / UNIT	MODEL USED ON ASS'Y NO.
APPLICATION	
CODE	
NOTICE TO PERSONS RECEIVING THIS DRAWING THE TECHNICAL MATERIEL CORPORATION claims proprietary right in the material disclosed hereon. This drawing is issued in confidence for engineering information only and may not be reproduced or used to manufacture anything shown hereon without permission from THE TECHNICAL MATERIEL CORPORATION to the user. This drawing is loaned for mutual assistance and is subject to recall at any time.	