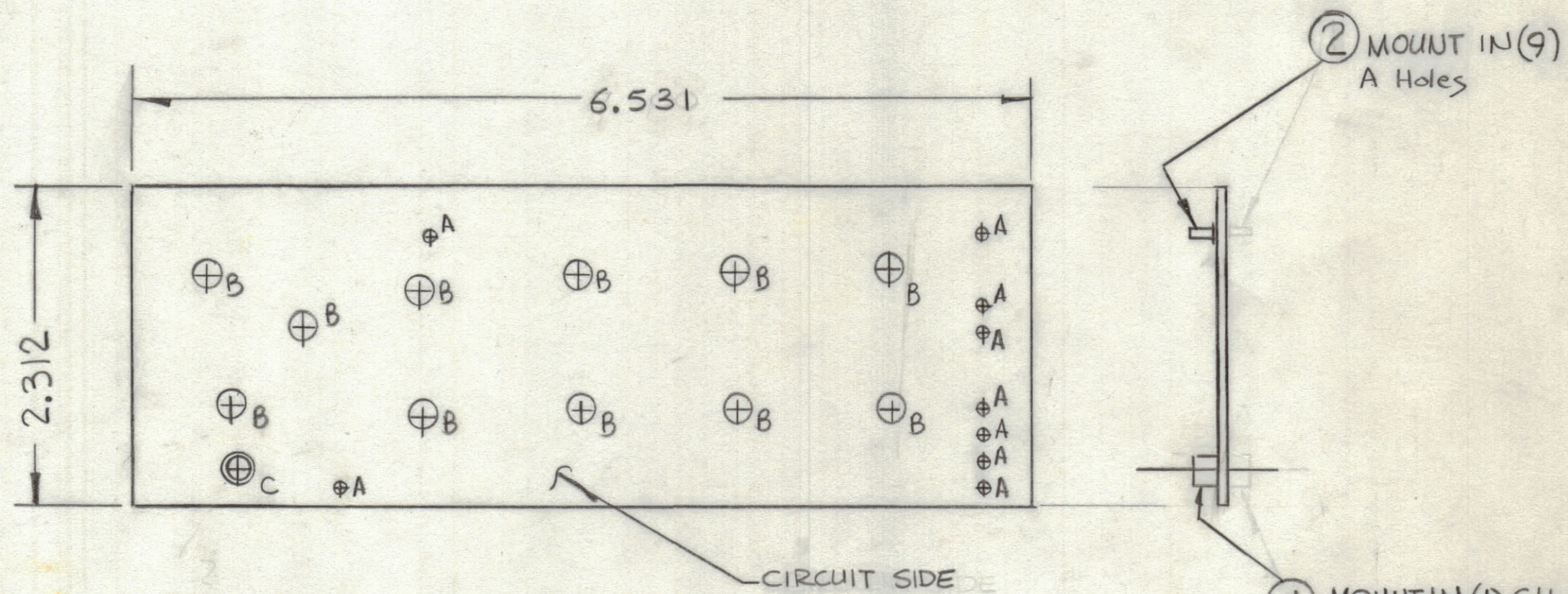


REVISIONS							
ZONE	LTR	DESCRIPTION	DATE	E.M.N.NO	DRAFT	CHKD	APPD
	X1	CSZ Added,	12-26-76				
	X2	DRAFTING ERROR, SIDE VIEW REVERSED	12-27-76				



NOTES:

FABRICATION NOTES (SEE S735)

1. OVERALL MATERIAL THICKNESS $.062 \pm .006$ AS PER pp 3.1, 3.2.
2. CONDUCTOR PATTERN TO BE COPPER FOIL AS PER pp 4.1.
PLATING TO BE TIN LEAD AS PER (pp 8.9.5)
3. MATERIAL: GIO GLASS EPOXY LAMINATE 2 OZ COPPER CLAD
4. ALL HOLES TO BE PLATED-THRU AS PER (pp 8.9.5)
— SEE MASTER ARTWORK FOR 1:1 PHOTO —

HOLE	DESCRIPTION	REQ
A	.050 DIA.	9
B	3/16 DIA	11
C	.189 DIA	1
UNMARKED HOLES .042 DIA.		

① MOUNT IN (1) C Hole AS SHOWN

* THREADS MUST BE DRILLED OUT — THIS IS USED FOR CLEARANCE ONLY!

QTY. REQ.	ITEM	PART NO.	DESCRIPTION	SYMBOL
9	2	JJ357-1	CONNECTOR, PIN	A
1	1	TE108-30	TERMINAL, STANDOFF	C

LIST OF MATERIAL

UNLESS OTHERWISE SPECIFIED DIMENSIONS ARE IN INCHES AND INCLUDE CHEMICALLY APPLIED OR PLATED FINISHES	FINAL APPROVAL	DATE
TOLERANCES ON	MECH. DES.	DATE
DECIMALS	<i>R Jzro</i>	12-26-76
.X $\pm .05$	ELECT. DES.	DATE
.XX $\pm .01$	CHECKED	DATE
.XXX $\pm .005$	<i>R Upr</i>	12-26-76
FRACTIONS	DRAWN	DATE
$\pm 1/64$		
ANGLES		
$\pm 0^{\circ} - 30'$		

THE TECHNICAL MATERIEL CORP.
MAMARONECK, NEW YORK

PRINTED CIRCUIT Bd.
PRE SELECTOR (FILTERS)

1	GPRI10A	AX
QTY / UNIT	MODEL USED ON	ASSY NO.
	APPLICATION	
	CODE	

MATERIAL	FINISH	SCALE	CODE IDENT. NO.	DWG NO.	ISSUE
			C 82679	PC748	X2
			SHEET	OF	

NOTICE TO PERSONS RECEIVING THIS DRAWING
THE TECHNICAL MATERIEL CORPORATION claims proprietary right in the material disclosed hereon. This drawing is issued in confidence for engineering information only and may not be reproduced or used to manufacture anything shown hereon without permission from THE TECHNICAL MATERIEL CORPORATION to the user. This drawing is loaned for mutual assistance and is subject to recall at any time.