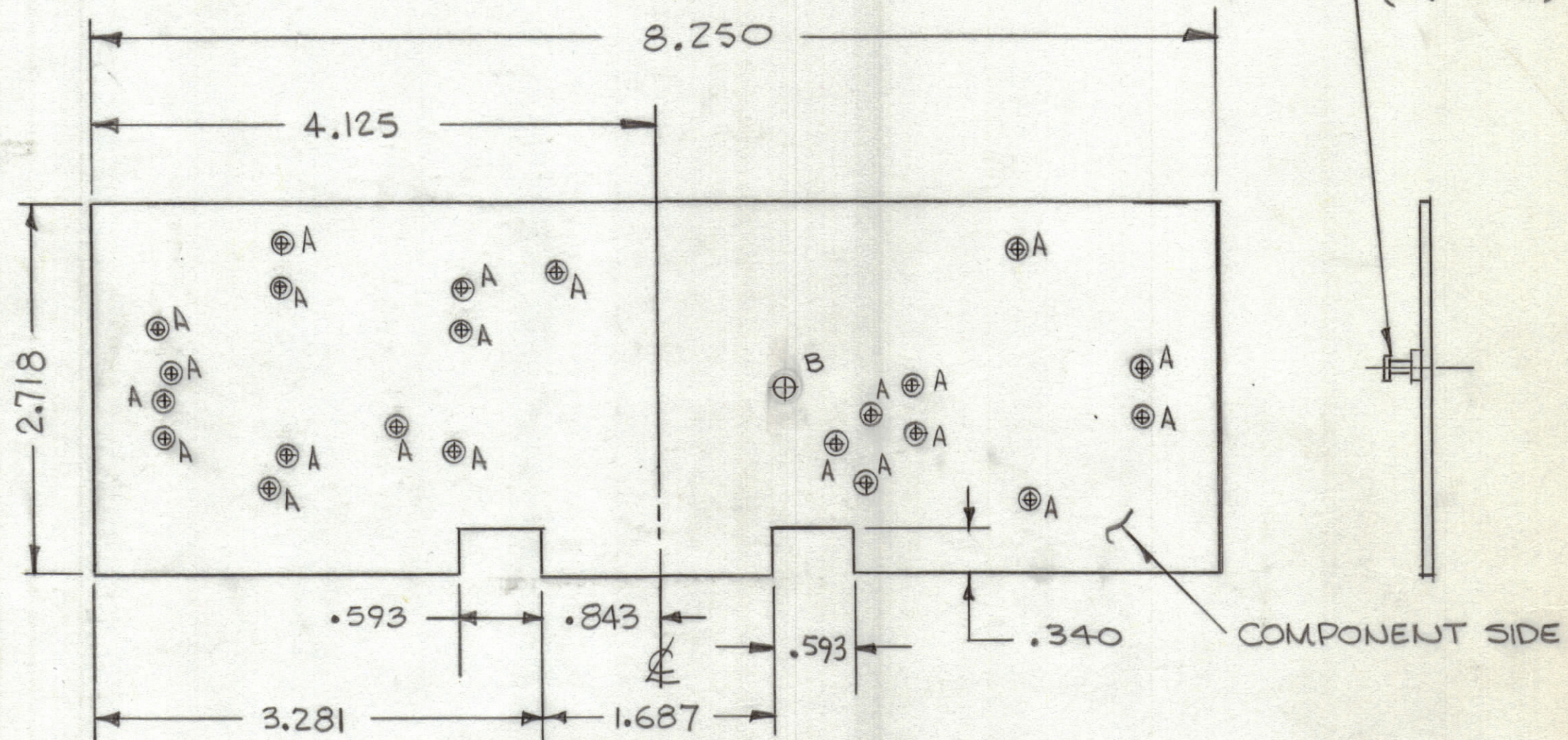


REVISIONS						
ZONE	LTR	DESCRIPTION	DATE	E.M.N.O	DRAFT	CHKD APPD



Hole	Description	Req
A	.081 DIA	22
B	.125 DIA	1
UNMARKED Holes .042 DIA		

REFERENCE Z104 (CK2125)

THIS IS NOT ORIGINAL ARTWORK  
THIS IS TO BE USED FOR REF ONLY

FABRICATION NOTES:

- TO BE MANUFACTURED IN ACCORDANCE WITH TMC SPEC 5735 F SPEC.
1. OVERALL MATERIAL THICKNESS .062 ± .006 AS PER (PP 3.1, 3.2)
2. CONDUCTOR PATTERN TO BE COPPER FOIL AS PER (PP 4.1)  
PLATING TO BE TIN LEAD AS PER PP 13.2.2, 13.2.1.
3. ALL HOLES TO BE PLATED - THRU AS PER (PP 8.9.5).
4. EDGE BOARD CONNECTOR FINGERS SHALL BE GOLD PLATED (PP 10)
5. MATERIAL: GIO GLASS EPOXY, LAMINATE 2 OZ COPPER CLAD, BOTH SIDES.

1	2	3	4
22	1	TE127-2	TERMINAL, STUD
QTY. REQ.	ITEM	PART NO.	DESCRIPTION
			SYMBOL

LIST OF MATERIAL

UNLESS OTHERWISE SPECIFIED DIMENSIONS ARE IN INCHES AND INCLUDE CHEMICALLY APPLIED OR PLATED FINISHES		FINAL APPROVAL	DATE	<b>THE TECHNICAL MATERIEL CORP.</b> MAMARONECK, NEW YORK  <b>PRINTED CIRCUIT BD.</b> <b>COMPARATOR</b>
TOLERANCES ON		MECH. DES.	DATE	
DECIMALS	FRACTIONS	ELECT. DES.	DATE	
.X ± .05	± 1/64	CHECKED	DATE	
.XX ± .01	ANGLES	DRAWN	DATE	SIZE CODE IDENT. NO. DWG. NO. ISSUE C 82679 PC741 $\emptyset$
.XXX ± .005	± 0° - 30'			SCALE SHEET OF
MATERIAL	FINISH			

QTY / UNIT	MODEL USED ON	ASS'Y NO.
1	KIT 416	A5636
1	GPR 110-A	A5636
APPLICATION		
	CODE	
NOTICE TO PERSONS RECEIVING THIS DRAWING THE TECHNICAL MATERIEL CORPORATION claims proprietary right in the material disclosed hereon. This drawing is issued in confidence for engineering information only and may not be reproduced or used to manufacture anything shown hereon without permission from THE TECHNICAL MATERIEL CORPORATION to the user. This drawing is loaned for mutual assistance and is subject to recall at any time.		