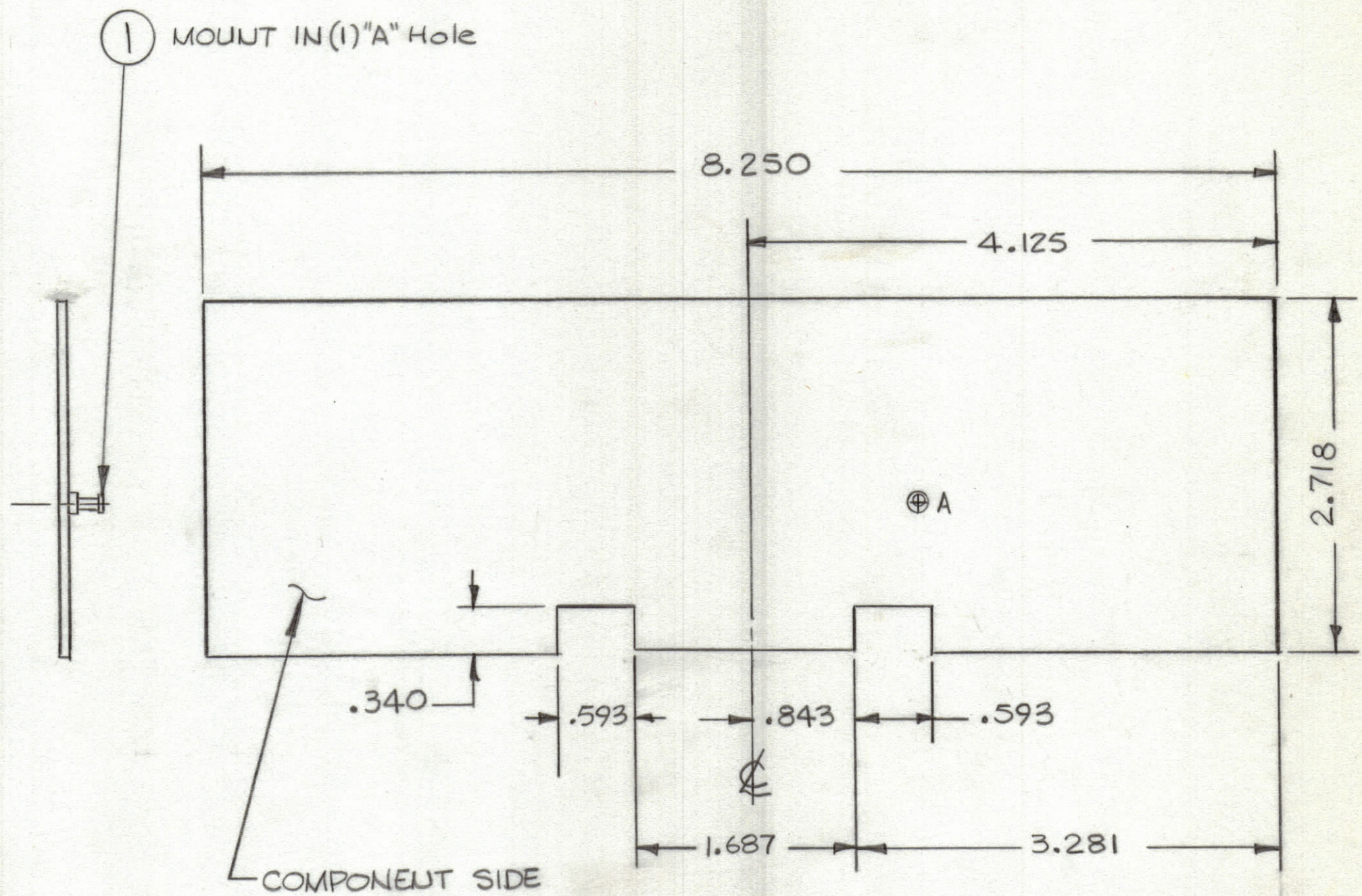


REVISIONS							
ZONE	LTR	DESCRIPTION	DATE	E.M.N.NO	DRAFT	CHKD	APPD



Hole	Description	Req
A	.081 DIA.	1
	UNMARKED HOLES .042 DIA	

REFERENCE Z106 (CK2124)

THIS IS TO BE USED FOR REF ONLY
THIS IS NOT ORIGINAL ARTWORK

- FABRICATION NOTES:
- TO BE MANUFACTURED IN ACCORDANCE WITH TMC SPEC S735 & SPEC.
 - OVERALL MATERIAL THICKNESS .062 ± .006 AS PER (pp 3.1, 3.2)
 - CONDUCTOR PATTERN TO BE COPPER FOIL AS PER (pp 4.1) PLATING TO BE TIN LEAD AS PER (pp 13.2.2, 13.2.1)
 - ALL HOLES TO BE PLATED-THRU AS PER (pp 8.9.5)
 - EDGE BOARD CONNECTOR FINGERS SHALL BE GOLD PLATED (pp 10)
 - MATERIAL: GIO GLASS EPOXY, LAMINATE 2 OZ COPPER CLAD, BOTH SIDES.

1	KIT 416	A5635
1	GPRIIO-A KIT	A5635
QTY / UNIT	MODEL USED ON	ASS'Y NO.
APPLICATION		
	CODE	
<p>NOTICE TO PERSONS RECEIVING THIS DRAWING</p> <p>THE TECHNICAL MATERIEL CORPORATION claims proprietary right in the material disclosed hereon. This drawing is issued in confidence for engineering information only and may not be reproduced or used to manufacture anything shown hereon without permission from THE TECHNICAL MATERIEL CORPORATION to the user. This drawing is loaned for mutual assistance and is subject to recall at any time.</p>		

TOLERANCES ON	
DECIMALS	FRACTIONS
.X ± .05	± 1/64
.XX ± .01	ANGLES
.XXX ± .005	± 0° -30'

QTY. REQ.	ITEM	PART NO.	DESCRIPTION	SYMBOL
1	1	TE127-2	TERMINAL, STUD	A
LIST OF MATERIAL				
FINAL APPROVAL		DATE		
MECH. DES. <i>RA</i>		DATE 3-31-76		
ELECT. DES.		DATE		
CHECKED <i>RA</i>		DATE 3-31-76		
DRAWN <i>R Uyo</i>		DATE 3-31-76		
SIZE	CODE IDENT. NO.	DWG NO.	ISSUE	
C	82679	PC740	Ø	
SCALE	SHEET		OF	

THE TECHNICAL MATERIEL CORP.
MAMARONECK, NEW YORK

PRINTED CIRCUIT BD.
7 MHz GENERATOR