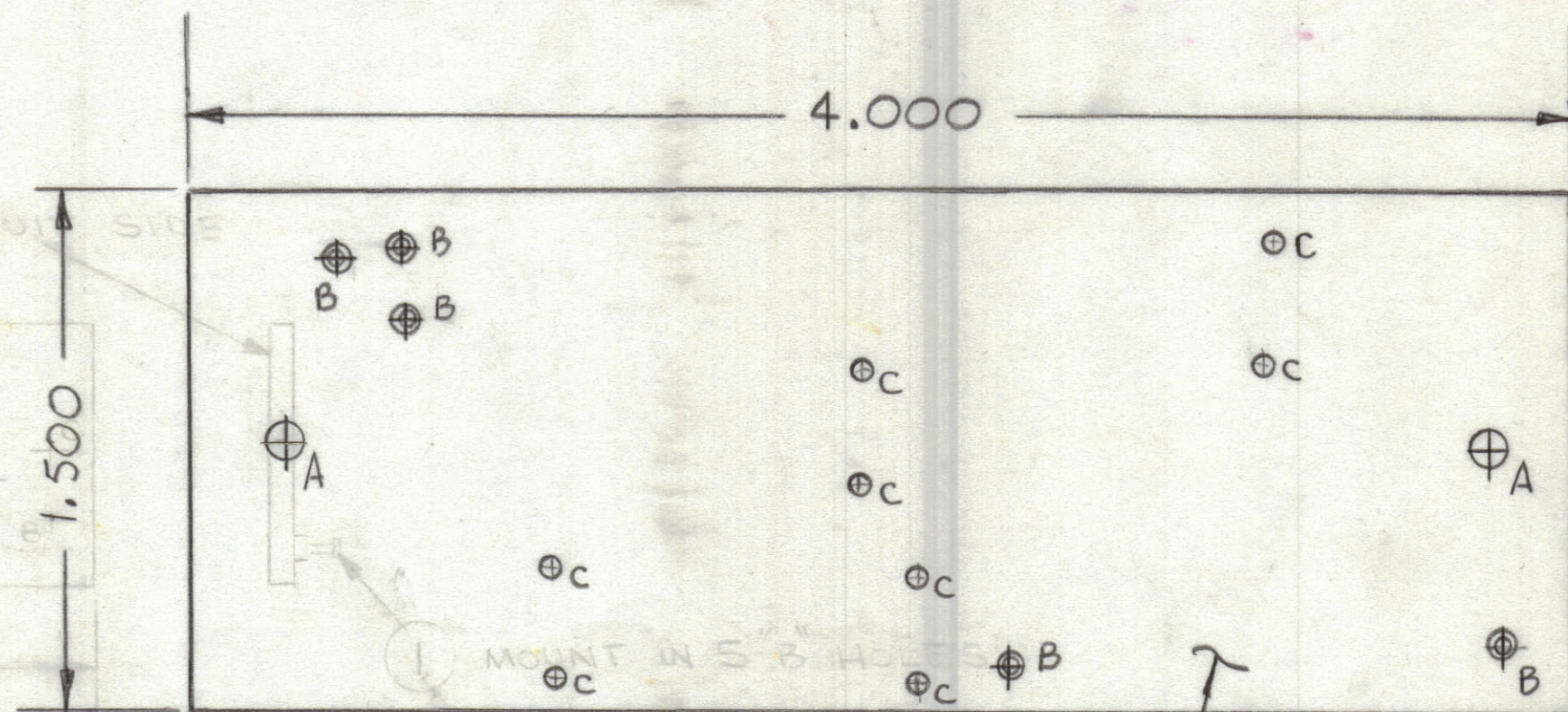


REVISIONS						
ZONE	LTR	DESCRIPTION	DATE	E.M.N.NO	DRAFT	CHKD APPD
	X	EXP. RELEASE	4-5-76			
		8(C) Holes Added	4-12-76			
A		C16, C10 MODIFIED, +9V LINE CLARIFIED ARTWORK UPDATED	5-28-76			



HOLE	DESCRIPTION	REQ
A	13/64 DIA.	2
B	.081 DIA.	5
C	.062 DIA.	8
UNMARKED HOLES .042 DIA		

FABRICATION NOTES:

- OVERALL MATERIAL THICKNESS $.062 \pm .006$ AS PER (PP3.1, PP3.2)
- CONDUCTOR PATTERN TO BE COPPER FOIL AS PER (PP4.1) PLATING TO BE TIN LEAD AS PER (PP13.2.2, 13.2.1)
- MIN FINISHED CONDUCTOR WIDTH SHALL NOT BE LESS THAN .020. MAX FINISHED CONDUCTOR WIDTH SHALL BE DETERMINED BY THE ARTWORK LINE WIDTH $\pm .010$.
- MATERIAL: GIO GLASS EPOXY, LAMINATE 20Z COPPER CLAD, SINGLE SIDE.

REF. CK2102

QTY. REQ.	ITEM	PART NO.	DESCRIPTION	SYMBOL
5	1	TE127-2	TERMINAL, STUD	B

LIST OF MATERIAL

UNLESS OTHERWISE SPECIFIED DIMENSIONS ARE IN INCHES AND INCLUDE CHEMICALLY APPLIED OR PLATED FINISHES		FINAL APPROVAL	DATE
TOLERANCES ON		MECH. DES.	DATE
DECIMALS	FRACTIONS	ELECT. DES.	DATE
.X $\pm .05$	$\pm 1/64$	CHECKED	DATE
.XX $\pm .01$	ANGLES	DRAWN	DATE
.XXX $\pm .005$	$\pm 0^{\circ} - 30'$		

THE TECHNICAL MATERIEL CORP. MAMARONECK, NEW YORK			
PRINTED CIRCUIT BD. SINGLE HF OSC.			
SIZE	CODE IDENT. NO.	DWG NO.	ISSUE
C	82679	PC 737	A
SCALE	SHEET		OF

1	BMA 516	A5632
QTY / UNIT	MODEL USED ON	ASS'Y NO.
APPLICATION		
CODE		
NOTICE TO PERSONS RECEIVING THIS DRAWING		
THE TECHNICAL MATERIEL CORPORATION claims proprietary right in the material disclosed herein. This drawing is issued in confidence for engineering information only and may not be reproduced or used to manufacture anything shown hereon without permission from THE TECHNICAL MATERIEL CORPORATION to the user. This drawing is loaned for mutual assistance and is subject to recall at any time.		