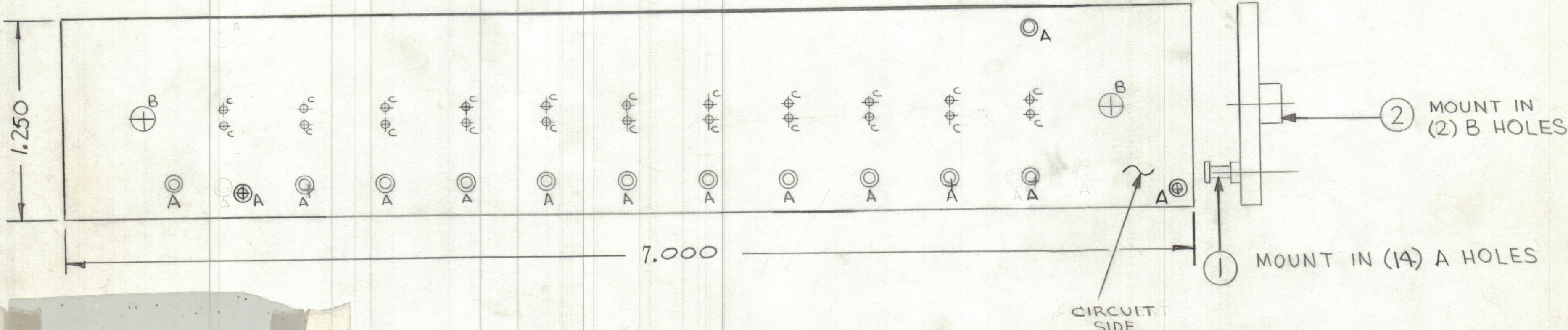


REVISIONS						
ZONE	LTR	DESCRIPTION	DATE	E.M.N.NO	DRAFT	CHKD APPD
X	A	REVISED + REDRAWN	12-31-74			
	B	DIM. CLARIFIED, E13, C13, CR12, CR13 R4, R5 Added	10-27-76	21471		* [Signature]



THIS IS NOT ORIGINAL ARTWORK. TO BE USED FOR REFERENCE ONLY.

- FABRICATION NOTES:  
 TO BE MANUFACTURED IN ACCORDANCE WITH TMC SPEC S735 AND SPECIFICALLY.
- OVERALL MATERIAL THICKNESS .062 ± .006 AS PER (PP 3.1, 3.2)
  - CONDUCTOR PATTERN TO BE COPPER FOIL AS PER (PP 4.1). PLATING TO BE TIN LEAD AS PER (PP 3.2.2, 3.2.1)
  - MATERIAL TO BE GIO GLASS EPOXY, LAMINATE 20Z COPPER CLAD. SINGLE SIDE.

HOLE	DESCRIPTION	REQ.
A	.081 DIA.	14
B	.189 DIA.	2
C	.062 DIA.	22
UNMARKED HOLES .042 DIA.		

QTY. REQ.	ITEM	PART NO.	DESCRIPTION	SYMBOL
2	2	TE164-6	TERMINAL, STANDOFF	B
14	1	TE127-2	TERMINAL, STUD	A

LIST OF MATERIAL

THE TECHNICAL MATERIEL CORP.  
MAMARONECK, NEW YORK

PRINTED CIRCUIT BD.  
Indicator Circuit

SIZE	CODE	IDENT. NO.	DWG. NO.	ISSUE
C	82679	PC715		B
SCALE	2:1		SHEET	OF

UNLESS OTHERWISE SPECIFIED DIMENSIONS ARE IN INCHES AND INCLUDE CHEMICALLY APPLIED OR PLATED FINISHES		FINAL APPROVAL * [Signature]	DATE 3/13/75
TOLERANCES ON		MECH. DES. E. IANNUZZI	DATE 2-7-75
DECIMALS .X ± .05 .XX ± .01 .XXX ± .005	FRACTIONS ± 1/64 ANGLES ± 0° -30'	ELECT. DES. E. IANNUZZI	DATE 2-7-75
MATERIAL		CHECKED E. IANNUZZI	DATE 2-7-75
FINISH		DRAWN E. IANNUZZI	DATE 12-31-74

1	TMA-1K	A4997
QTY / UNIT	MODEL USED ON	ASS'Y NO.
APPLICATION		
	CODE	
NOTICE TO PERSONS RECEIVING THIS DRAWING		
THE TECHNICAL MATERIEL CORPORATION claims proprietary right in the material disclosed hereon. This drawing is issued in confidence for engineering information only and may not be reproduced or used to manufacture anything shown hereon without permission from THE TECHNICAL MATERIEL CORPORATION to the user. This drawing is loaned for mutual assistance and is subject to recall at any time.		