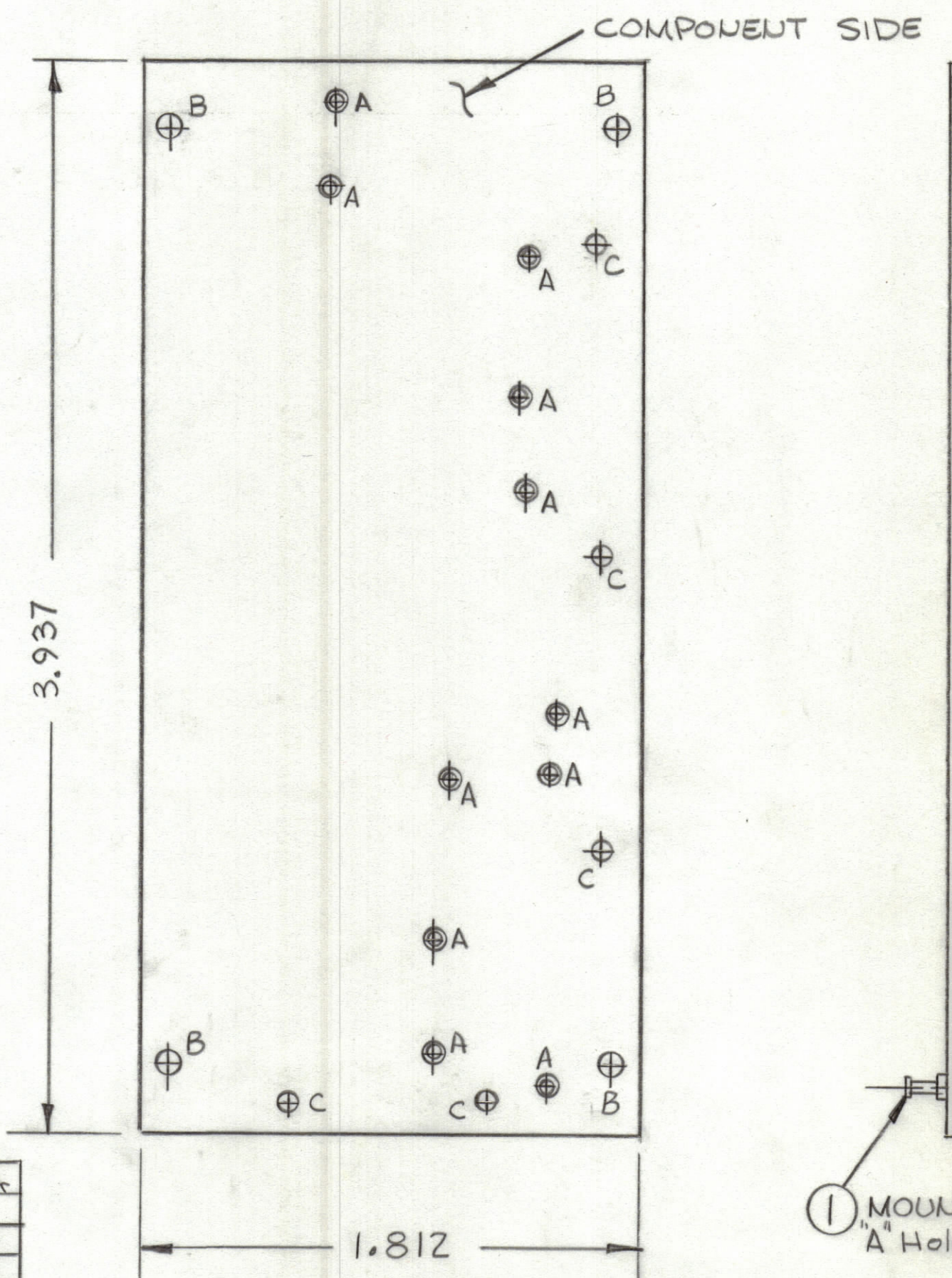


REVISIONS						
ZONE	LTR	DESCRIPTION	DATE	E.M.N.NO	DRAFT	CHKD APPD



MACHINING SCALE 2:1



THIS IS NOT ORIGINAL ARTWORK
THIS IS TO BE USED FOR REF ONLY

FABRICATION NOTES:

- TO BE MANUFACTURED IN ACCORDANCE WITH TMC SPEC S735 AND SPECIFICALLY
- 1. OVERALL MATERIAL THICKNESS $.062 \pm .0062$ AS PER (pp 3.1, 3.2)
- 2. CONDUCTOR PATTERN TO BE COPPER FOIL AS PER (pp 4.1) PLATING TO BE TIN LEAD AS PER (pp 13.2.2, 13.2.1)
- 3. MIN FINISHED CONDUCTOR WIDTH SHALL NOT BE LESS THAN $.020$
MAX FINISHED CONDUCTOR WIDTH SHALL BE DETERMINED BY THE ARTWORK LINE WIDTH $\pm .010$
- 4. ALL HOLES TO BE PLATED THRU AS PER (pp 8.9.5).. UNLESS OTHERWISE SPECIFIED
- 5.
- 6. ALL UNMARKED HOLES TO BE NO. 60 ($.040$) DRILL (SEE INDIVIDUAL ARTWORK FOR LOCATION)
- 7. MATERIAL: G10 GLASS EPOXY, LAMINATE 2 OZ. COPPER CLAD, BOTH SIDES

Hole	Description	Req
A	.081 DIA	11
B	11/64 DIA	4
C	9/64 DIA	5
Unmarked Holes .040 DIA		

(REF CK1888 E306)

QTY. REQ.	ITEM	PART NO.	DESCRIPTION	SYMBOL
11	1	TE127-2	TERMINAL, STUD	A

LIST OF MATERIAL

UNLESS OTHERWISE SPECIFIED DIMENSIONS ARE IN INCHES AND INCLUDE CHEMICALLY APPLIED OR PLATED FINISHES	FINAL APPROVAL	DATE
TOLERANCES ON DECIMALS .X $\pm .05$.XX $\pm .01$.XXX $\pm .005$ FRACTIONS $\pm 1/64$ ANGLES $\pm 0^\circ -30'$	MECH. DES.	DATE
	ELECT. DES.	DATE
	CHECKED	DATE
	DRAWN <i>R. Ulf</i>	DATE 12-10-73

THE TECHNICAL MATERIEL CORP. MAMARONECK, NEW YORK			
PRINTED CIRCUIT BD HF, IF			
SIZE	CODE IDENT.NO	DWG NO.	ISSUE
C	82679	PC698	\emptyset
SCALE	SHEET		OF

1	BMA 516	A4973
QTY / UNIT	MODEL USED ON	ASS'Y NO.
APPLICATION		
CODE		
NOTICE TO PERSONS RECEIVING THIS DRAWING THE TECHNICAL MATERIEL CORPORATION claims proprietary right in the material disclosed hereon. This drawing is issued in confidence for engineering information only and may not be reproduced or used to manufacture anything shown hereon without permission from THE TECHNICAL MATERIEL CORPORATION to the user. This drawing is loaned for mutual assistance and is subject to recall at any time.		