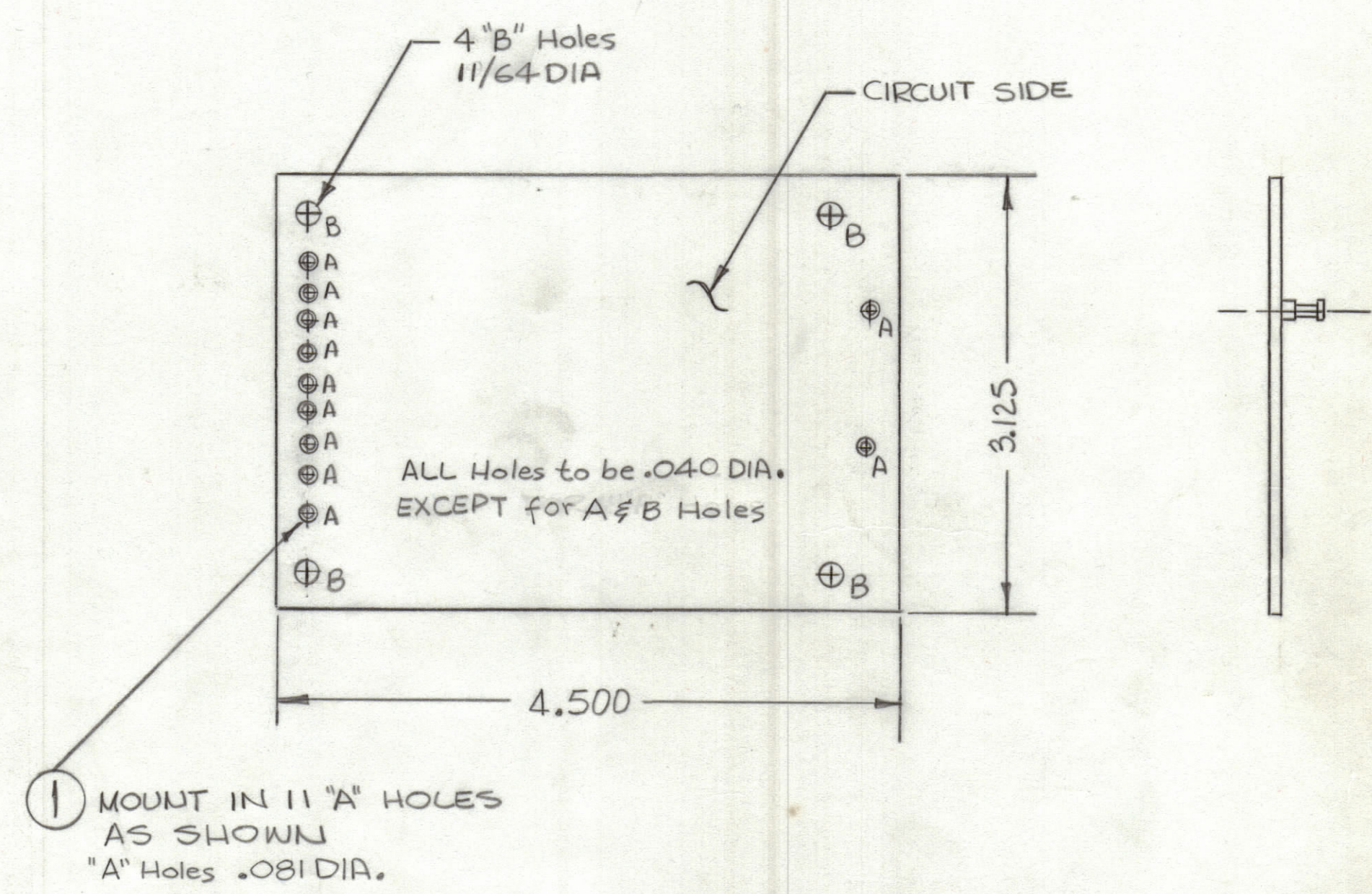


REVISIONS						
ZONE	LTR	DESCRIPTION	DATE	E.M.N.NO	DRAFT	CHKD APPD
	Ø	ORIGINAL RELEASE FOR PRODUCTION	11/2/73		DV	

THIS IS NOT ORIGINAL ARTWORK
THIS IS TO BE USED FOR REF ONLY



FABRICATION NOTES:

TO BE MANUFACTURED IN ACCORDANCE WITH TMC SPEC S735 AND SPECIFICALLY

1. OVERALL MATERIAL THICKNESS .062 ± .0062 AS PER (pp 3.1, 3.2)
2. CONDUCTOR PATTERN TO BE COPPER FOIL AS PER (pp 4.1) PLATING TO BE TIN LEAD AS PER (pp 13.2.2, 13.2.1)
3. MIN FINISHED CONDUCTOR WIDTH SHALL NOT BE LESS THAN .020
MAX FINISHED CONDUCTOR WIDTH SHALL BE DETERMINED BY THE ARTWORK LINE WIDTH ± .010.
4. ALL UNMARKED HOLES TO BE NO. 60 (.040) DRILL (SEE INDIVIDUAL ARTWORK FOR LOCATION)
5. MATERIAL: G10 GLASS EPOXY, LAMINATE 2 OZ. COPPER CLAD, ONESIDE
6. MARK COMPONENT SIDE, BLACK GOTHIC SIZE AND LOCATION AS SHOWN

1	BMA513	A4970
QTY / UNIT	MODEL USED ON	ASS'Y NO.
APPLICATION		
CODE		
<p>NOTICE TO PERSONS RECEIVING THIS DRAWING</p> <p>THE TECHNICAL MATERIEL CORPORATION claims proprietary right in the material disclosed hereon. This drawing is issued in confidence for engineering information only and may not be reproduced or used to manufacture anything shown hereon without permission from THE TECHNICAL MATERIEL CORPORATION to the user. This drawing is loaned for mutual assistance and is subject to recall at any time.</p>		
MATERIAL		
FINISH		

UNLESS OTHERWISE SPECIFIED DIMENSIONS ARE IN INCHES AND INCLUDE CHEMICALLY APPLIED OR PLATED FINISHES

TOLERANCES ON	
DECIMALS	FRACTIONS
.X ± .05	± 1/64
.XX ± .01	ANGLES
.XXX ± .005	± 0° -30'

11	1	TE127-2	TERMINAL, STUD	A
QTY. REQ.	ITEM	PART NO.	DESCRIPTION	SYMBOL
LIST OF MATERIAL				
FINAL APPROVAL		DATE	THE TECHNICAL MATERIEL CORP.	
MECH. DES.		DATE	MAMARONECK, NEW YORK	
ELECT. DES.		DATE	PRINTED CIRCUIT BD	
CHECKED		DATE	(POWER SUPPLY)	
DRAWN		DATE	SIZE	CODE IDENT.NO. DWG NO. ISSUE
			C	82679 PC695 Ø
SCALE			SHEET	OF

PC695 B