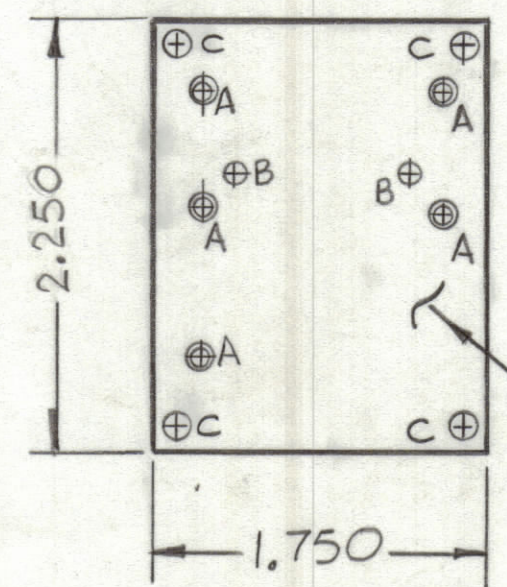
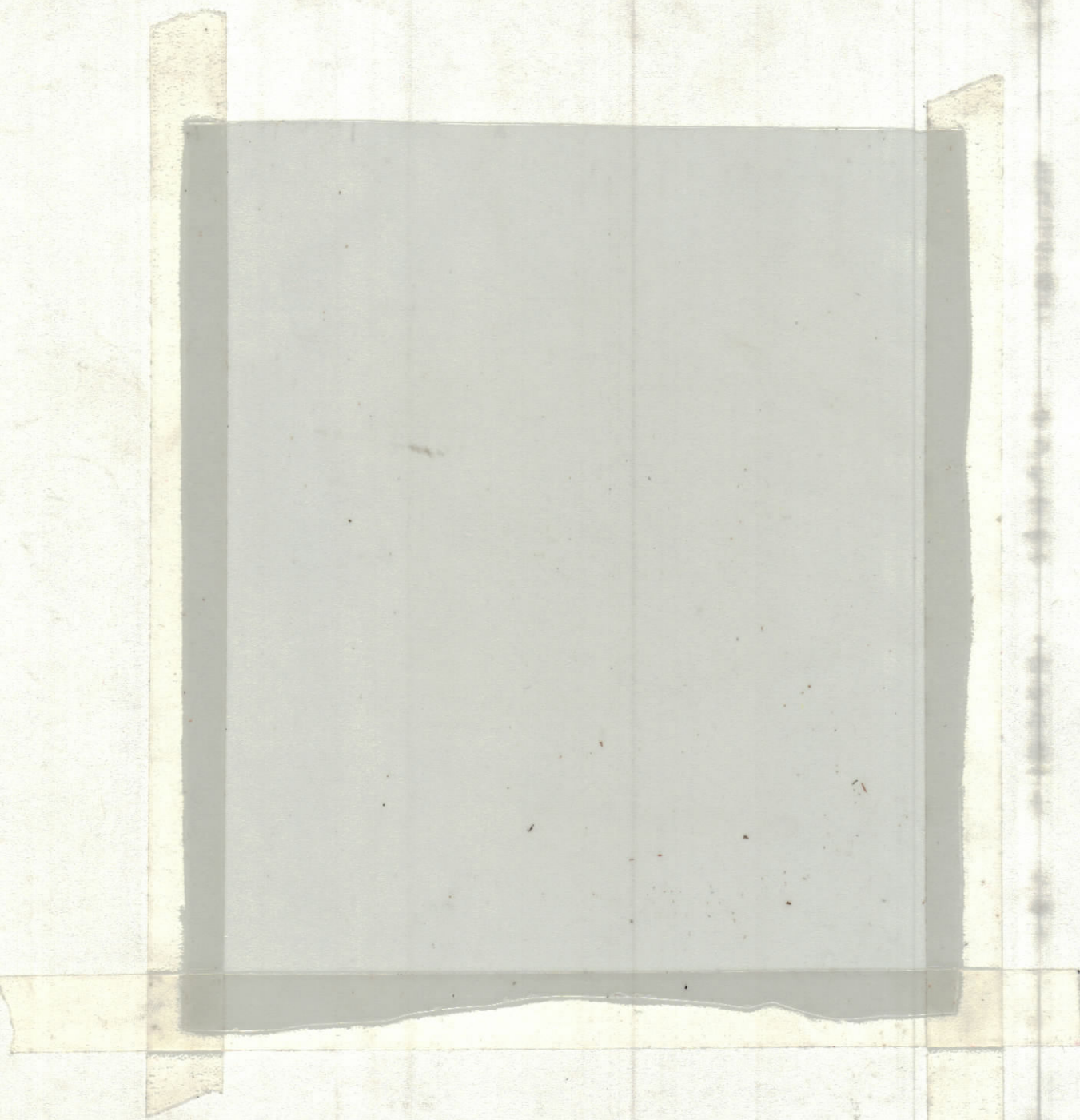


| REVISIONS | | | | | | |
|-----------|-----|---------------------------------|---------|----------|-------|-----------|
| ZONE | LTR | DESCRIPTION | DATE | E.M.N.NO | DRAFT | CHKD APPD |
| | 0 | ORIGINAL RELEASE FOR PRODUCTION | 8/27/73 | | CL | |



① MOUNT IN ALL "A" HOLES (5 REQ)

CIRCUIT SIDE

THIS IS NOT ORIGINAL ARTWORK
THIS IS TO BE USED FOR REF ONLY

- TO BE MANUFACTURED IN ACCORDANCE WITH TMC SPEC 5735 & SPEC.
- OVERALL MATERIAL THICKNESS .062 ± .006 AS PER pp 3.1, 3.2
 - CONDUCTOR PATTERN TO BE COPPER FOIL AS PER pp 4.1
PLATING TO BE TIN LEAD AS PER pp 13.2.2, 13.2.1
 - MATERIAL: GIO GLASS EPOXY, LAMINATE 2 OZ COPPER CLAD.
 - THIS IS A SINGLE SIDED BOARD

| HOLE | DESCRIPTION | REQ |
|-------------------------|-------------|-----|
| A | .092 DIA | 5 |
| B | .062 DIA | 2 |
| C | 11/64 DIA | 4 |
| UNMARKED HOLES .042 DIA | | |

(REF CK2050)

| QTY. REQ. | ITEM | PART NO. | DESCRIPTION | SYMBOL |
|-----------|------|----------|----------------|--------|
| 5 | 1 | TE127-6 | TERMINAL, STUD | A |

LIST OF MATERIAL

| | | | |
|----------------|--|------|--|
| FINAL APPROVAL | | DATE | THE TECHNICAL MATERIEL CORP. MAMARONECK, NEW YORK PRINTED CIRCUIT BD. ("L" SENSING) |
| MECH. DES. | | DATE | |
| ELECT. DES. | | DATE | |
| CHECKED | | DATE | |
| DRAWN | | DATE | |

| | | | |
|---|-----------|---------------|-----------------|
| UNLESS OTHERWISE SPECIFIED DIMENSIONS ARE IN INCHES AND INCLUDE CHEMICALLY APPLIED OR PLATED FINISHES | | TOLERANCES ON | |
| DECIMALS | FRACTIONS | SIZE | CODE IDENT. NO. |
| .X ± .05 | ± 1/64 | C | 82679 |
| .XX ± .01 | ANGLES | DWG NO. | PC694 |
| .XXX ± .005 | ± 0° -30' | ISSUE | φ |
| MATERIAL | | SCALE | SHEET |
| FINISH | | | OF |

| | | |
|-------------|---------------|-----------|
| 1 | ATSA-3 | A4968 |
| QTY / UNIT | MODEL USED ON | ASS'Y NO. |
| APPLICATION | | |
| CODE | | |

NOTICE TO PERSONS RECEIVING THIS DRAWING
THE TECHNICAL MATERIEL CORPORATION claims proprietary right in the material disclosed hereon. This drawing is issued in confidence for engineering information only and may not be reproduced or used to manufacture anything shown hereon without permission from THE TECHNICAL MATERIEL CORPORATION to the user. This drawing is loaned for mutual assistance and is subject to recall at any time.

PC694