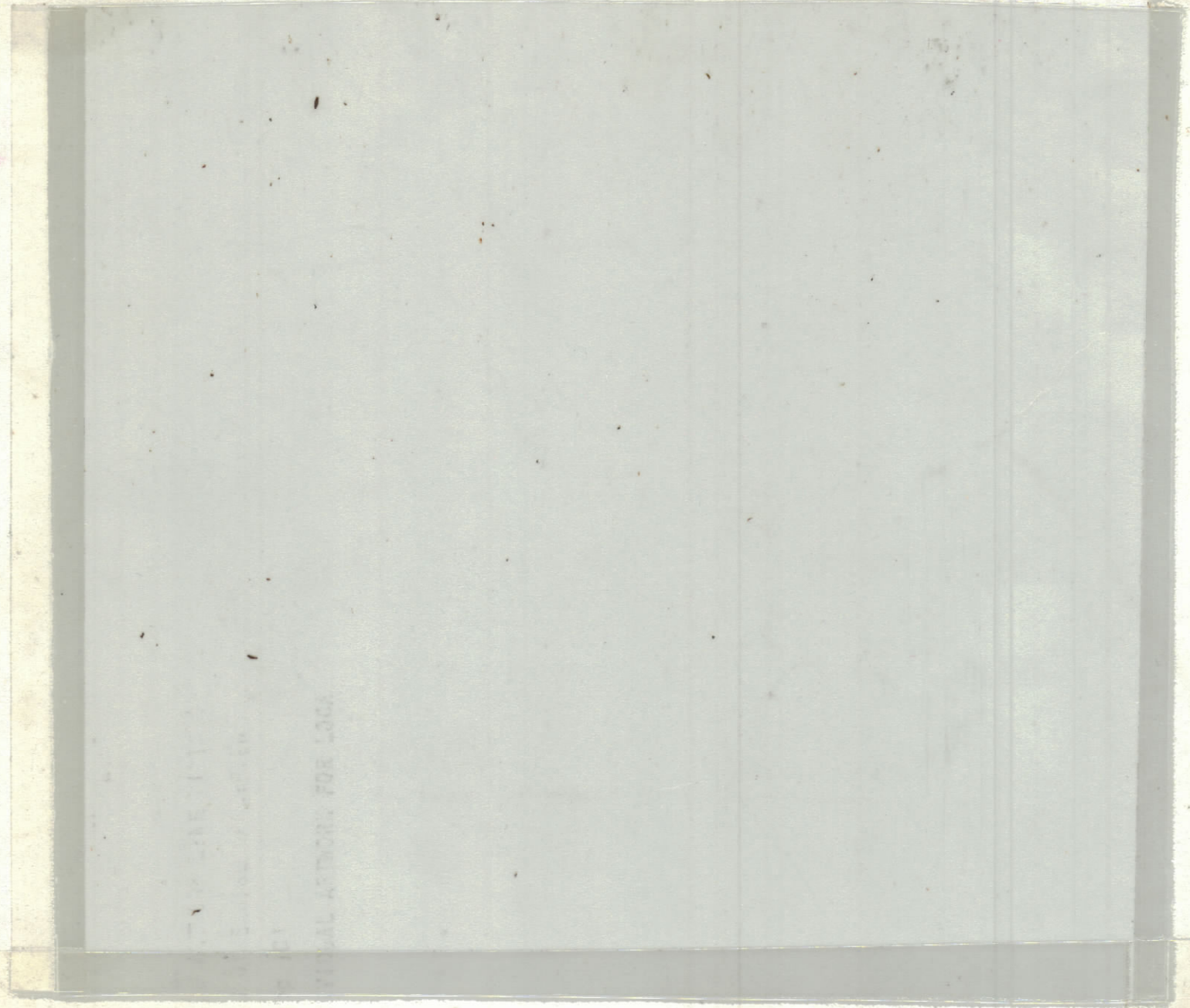
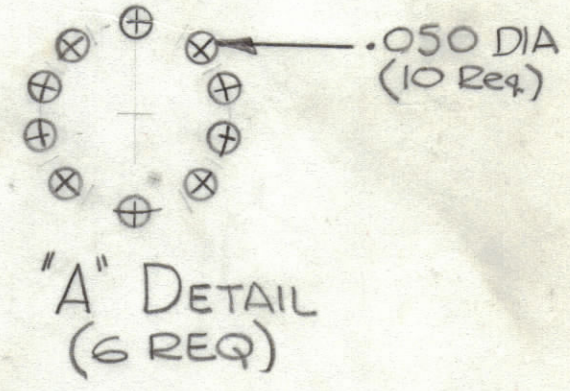
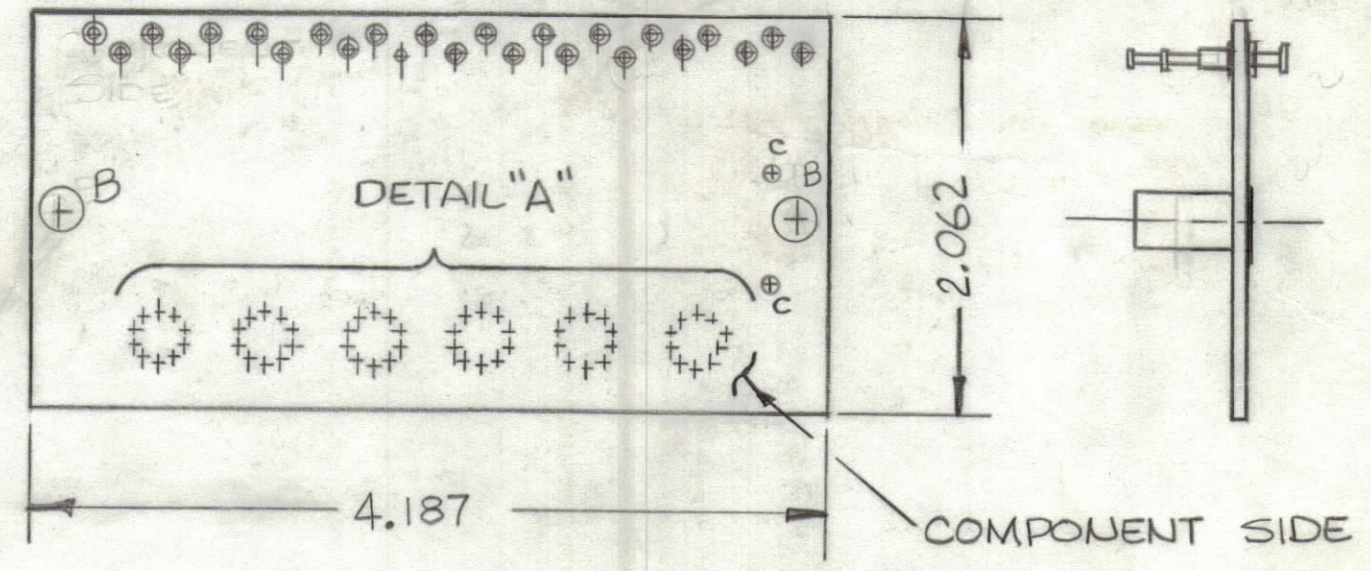


REVISIONS						
ZONE	LTR	DESCRIPTION	DATE	E.M.N.NO	DRAFT	CHKD APPD



THIS IS NOT ORIGINAL ARTWORK
THIS IS TO BE USED FOR REF ONLY



B Holes 1/64 DIA
2 Req

ALL UNMARKED HOLES
TO BE .040 DIA

FABRICATION NOTES:

- TO BE MANUFACTURED IN ACCORDANCE WITH TMC SPEC S735 AND SPECIFICALLY
- OVERALL MATERIAL THICKNESS $.062 \pm .0062$ AS PER (pp 3.i, 3.2)
 - CONDUCTOR PATTERN TO BE COPPER FOIL AS PER (pp 4.i) PLATING TO BE TIN LEAD AS PER (pp 13.2.2, 13.2.1)
 - MIN FINISHED CONDUCTOR WIDTH SHALL NOT BE LESS THAN $.020$
MAX FINISHED CONDUCTOR WIDTH SHALL BE DETERMINED BY THE ARTWORK LINE WIDTH $\pm .010$
 - ALL HOLES TO BE PLATED THRU AS PER (pp 8.9.5). UNLESS OTHERWISE SPECIFIED
 - DELETED
 - ALL UNMARKED HOLES TO BE NO. 60 ($.040$) DRILL (SEE INDIVIDUAL ARTWORK FOR LOCATION)
 - MATERIAL: G10 GLASS EPOXY, LAMINATE 2 OZ. COPPER CLAD, BOTH SIDES
 - MARK COMPONENT SIDE BLACK GOTHIC SIZE AND LOCATION AS SHOWN.

Hole	Description	Req
A	See Detail "A"	6
B	.189 DIA	2
C	.062 DIA	2
D	.076 DIA	27
	.040 DIA UNMARKED	

(REF CK2044) Z101

QTY. REQ.	ITEM	PART NO.	DESCRIPTION	SYMBOL
27	2	TE168-4-B	TERMINAL MINIATURE	D
2	1	TE108-19	STANDOFF, RIVET TYPE	B

LIST OF MATERIAL

UNLESS OTHERWISE SPECIFIED
DIMENSIONS ARE IN INCHES
AND INCLUDE CHEMICALLY APPLIED
OR PLATED FINISHES

TOLERANCES ON

DECIMALS	FRACTIONS
.X $\pm .05$	$\pm 1/64$
.XX $\pm .01$	ANGLES
.XXX $\pm .005$	$\pm 0^\circ -30'$

FINAL APPROVAL	DATE
MECH. DES.	DATE
ELECT. DES.	DATE
CHECKED	DATE
DRAWN <i>R UNF</i>	DATE 11-5-73

THE TECHNICAL MATERIEL CORP.
MAMARONECK, NEW YORK

PRINTED CIRCUIT BD
READOUT DISPLAY

SIZE	CODE IDENT.NO	DWG NO.	ISSUE
C	82679	PC685	Ø

SCALE SHEET OF

QTY / UNIT	BMA514	A4959
	MODEL USED ON	ASS'Y NO.
APPLICATION		
	CODE	
<p>NOTICE TO PERSONS RECEIVING THIS DRAWING</p> <p>THE TECHNICAL MATERIEL CORPORATION claims proprietary right in the material disclosed herein. This drawing is issued in confidence for engineering information only and may not be reproduced or used to manufacture anything shown hereon without permission from THE TECHNICAL MATERIEL CORPORATION to the user. This drawing is loaned for mutual assistance and is subject to recall at any time.</p>		

PC685
Ø
B