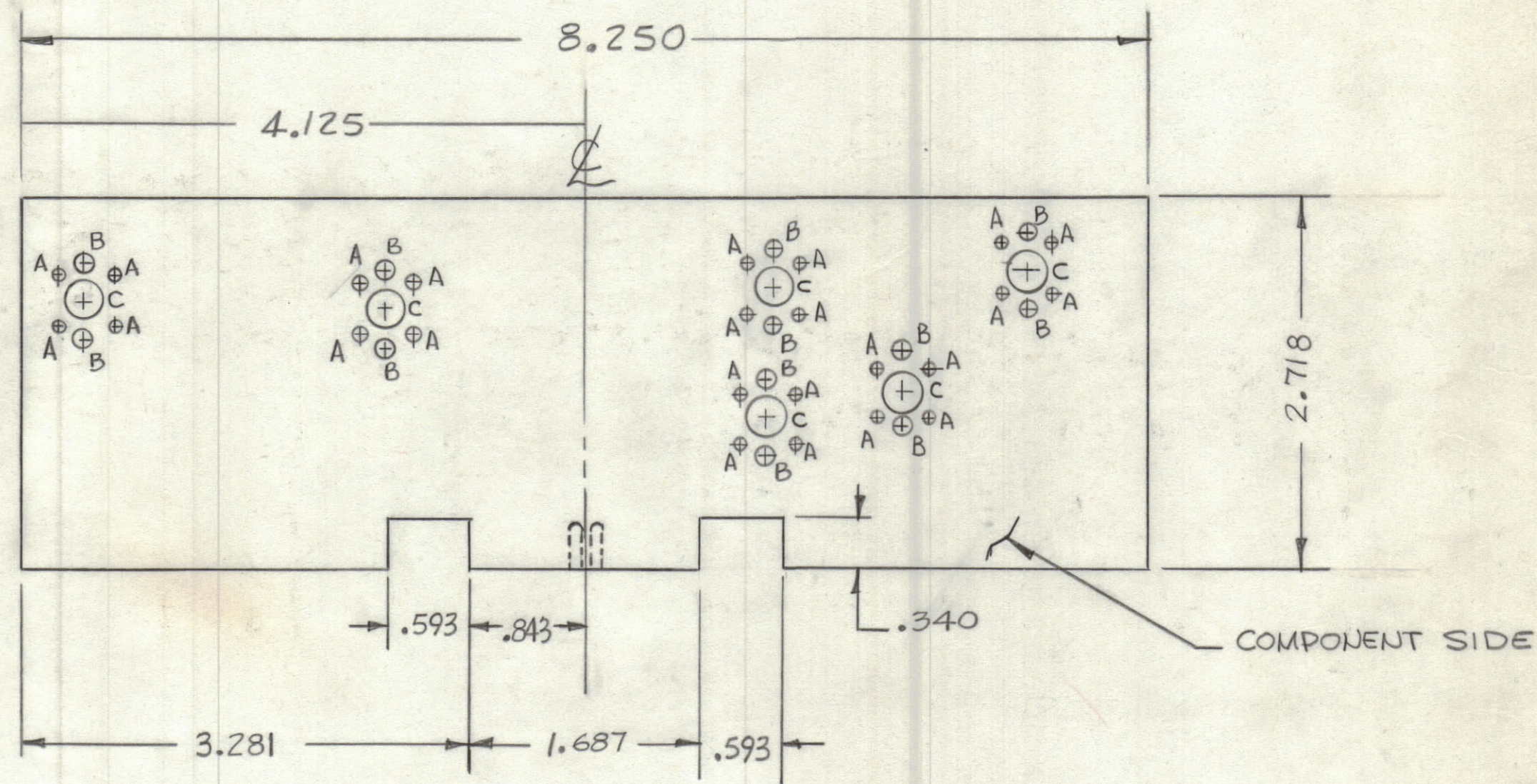


REVISIONS						
ZONE	LTR	DESCRIPTION	DATE	E.M.N.NO	DRAFT	CHKD APPD



Hole	DESCRIPTION	Qty
A	.062 DIA	24
B	.090 DIA	12
C	9/32 DIA	6
UNMARKED HOLE .040		

THIS IS NOT ORIGINAL ARTWORK
THIS IS TO BE USED FOR REF ONLY

- FABRICATION NOTES:
- TO BE MANUFACTURED IN ACCORDANCE WITH TMC SPEC S735 AND SPECIFICALLY
 - 1. OVERALL MATERIAL THICKNESS $.062 \pm .0062$ AS PER (pp 3.1, 3.2)
 - 2. CONDUCTOR PATTERN TO BE COPPER FOIL AS PER (pp 4.1) PLATING TO BE TIN LEAD AS PER (pp 13.2.2, 13.2.1)
 - 3. MIN FINISHED CONDUCTOR WIDTH SHALL NOT BE LESS THAN $.020$
MAX FINISHED CONDUCTOR WIDTH SHALL BE DETERMINED BY THE ARTWORK LINE WIDTH $\pm .010$
 - 4. ALL HOLES TO BE PLATED THRU AS PER (pp 8.9.5). UNLESS OTHERWISE SPECIFIED
 - 5. EDGE BOARD CONNECTORS (FINGER) SHALL BE GOLD PLATED (pp 10)
 - 6. ALL UNMARKED HOLES TO BE NO. 60 (.040) DRILL (SEE INDIVIDUAL ARTWORK FOR LOCATION)
 - 7. MATERIAL: G10 GLASS EPOXY, LAMINATE 2 OZ. COPPER CLAD, BOTH SIDES

(REF CK1893, Ref Z110)

1	BMA515(GPR110)	A4950
QTY / UNIT	MODEL USED ON	ASSY NO.
APPLICATION		
CODE		
NOTICE TO PERSONS RECEIVING THIS DRAWING THE TECHNICAL MATERIEL CORPORATION claims proprietary right in the material disclosed hereon. This drawing is issued in confidence for engineering information only and may not be reproduced or used to manufacture anything shown hereon without permission from THE TECHNICAL MATERIEL CORPORATION to the user. This drawing is loaned for mutual assistance and is subject to recall at any time.		

QTY. REQ.	ITEM	PART NO.	DESCRIPTION	SYMBOL
LIST OF MATERIAL				
FINAL APPROVAL		DATE	THE TECHNICAL MATERIEL CORP. MAMARONECK, NEW YORK PRINTED CIRCUIT BD, 100 HZ SYNTHESIZER	
MECH. DES.		DATE		
ELECT. DES.		DATE		
CHECKED		DATE		
DRAWN		DATE		
MATERIAL			SIZE	CODE IDENT.NO.
FINISH			C	82679
			DWG NO.	PC676
			ISSUE	1
SCALE			SHEET	OF