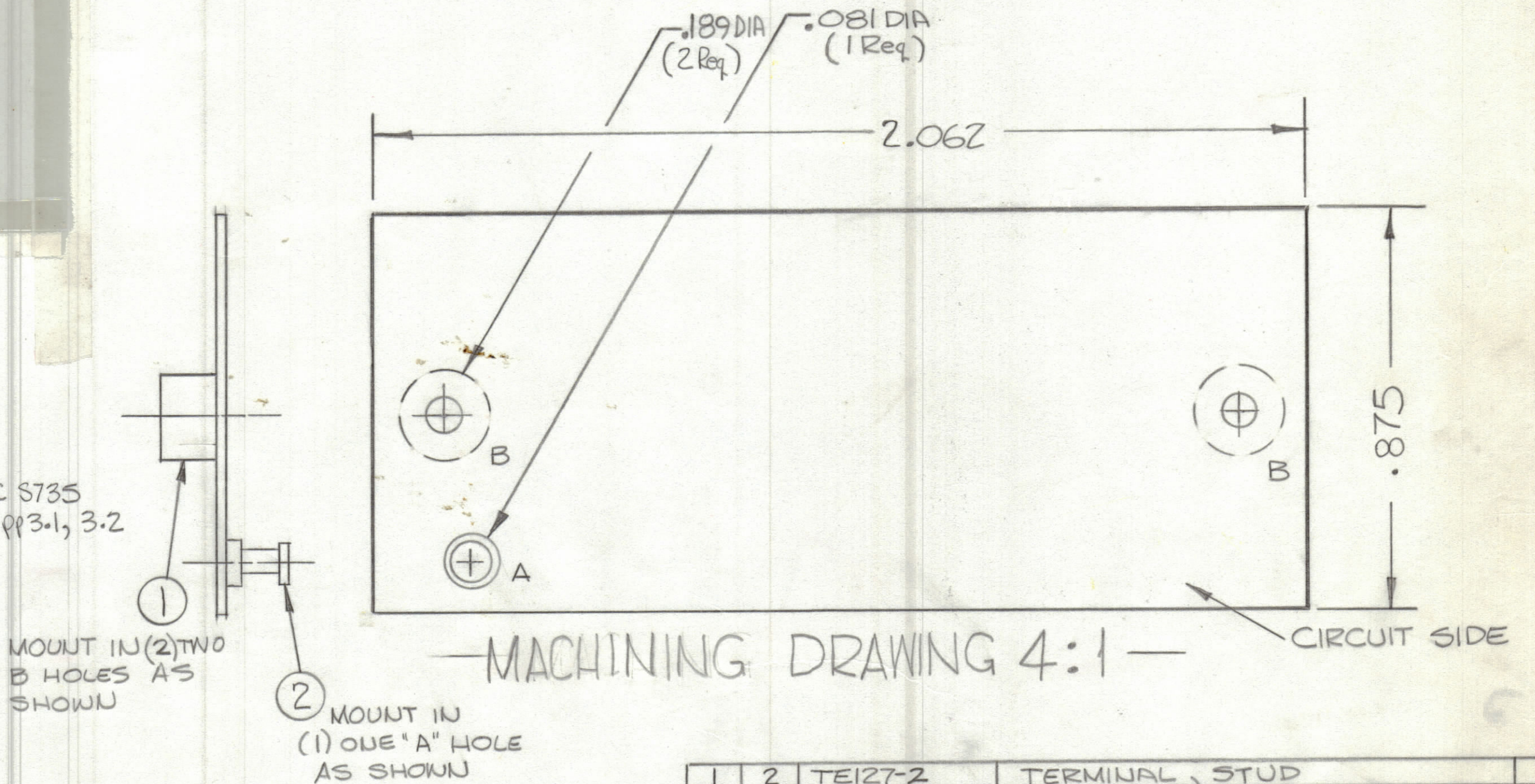


REVISIONS						
ZONE	LTR	DESCRIPTION	DATE	E.M.N.NO	DRAFT	CHKD APPD
	Ø	ORIGINAL RELEASE FOR PRODUCTION	8/24/73		CL	

THIS IS NOT ORIGINAL ARTWORK
THIS IS TO BE USED FOR REF ONLY

FABRICATION NOTES:

- TO BE MANUFACTURED IN ACCORDANCE WITH TMC SPEC S735
- 1. OVERALL MATERIAL THICKNESS $.062 \pm .006$ AS PER PP3.1, 3.2
- 2. CONDUCTOR PATTERN TO BE COPPER FOIL AS PER PP4.1
PLATING TO BE TIN LEAD AS PER PP3.2.2, 13.2.1
- 3. MATERIAL TO BE X.P PHANOLIC, LAMINATE
2 OZ COPPER SINGLE SIDE.



QTY. REQ.	ITEM	PART NO.	DESCRIPTION	SYMBOL
1	2	TE127-2	TERMINAL, STUD	A
2	1	TE108-1	TERMINAL, STANDOFF	B

LIST OF MATERIAL

THE TECHNICAL MATERIEL CORP.
MAMARONECK, NEW YORK

PRINTED CIRCUIT BD.
RESISTOR

1	ATSA-3	AX5179
QTY / UNIT	MODEL USED ON	ASS'Y NO.
APPLICATION		
CODE		
NOTICE TO PERSONS RECEIVING THIS DRAWING		
THE TECHNICAL MATERIEL CORPORATION claims proprietary right in the material disclosed hereon. This drawing is issued in confidence for engineering information only and may not be reproduced or used to manufacture anything shown hereon without permission from THE TECHNICAL MATERIEL CORPORATION to the user. This drawing is loaned for mutual assistance and is subject to recall at any time.		

UNLESS OTHERWISE SPECIFIED
DIMENSIONS ARE IN INCHES
AND INCLUDE CHEMICALLY APPLIED
OR PLATED FINISHES

TOLERANCES ON

DECIMALS	FRACTIONS
.X $\pm .05$	$\pm 1/64$
.XX $\pm .01$	ANGLES
.XXX $\pm .005$	$\pm 0^\circ -30'$

MATERIAL

FINISH

FINAL APPROVAL	DATE
<i>[Signature]</i>	8-9-73
MECH. DES.	DATE
<i>[Signature]</i>	8-9-73
ELECT. DES.	DATE
<i>[Signature]</i>	8-9-73
CHECKED	DATE
<i>[Signature]</i>	8-9-73
DRAWN	DATE
<i>[Signature]</i>	8-9-73

SIZE	CODE IDENT.NO.	DWG NO.	ISSUE
C	82679	PC675	Ø
SCALE	SHEET		OF