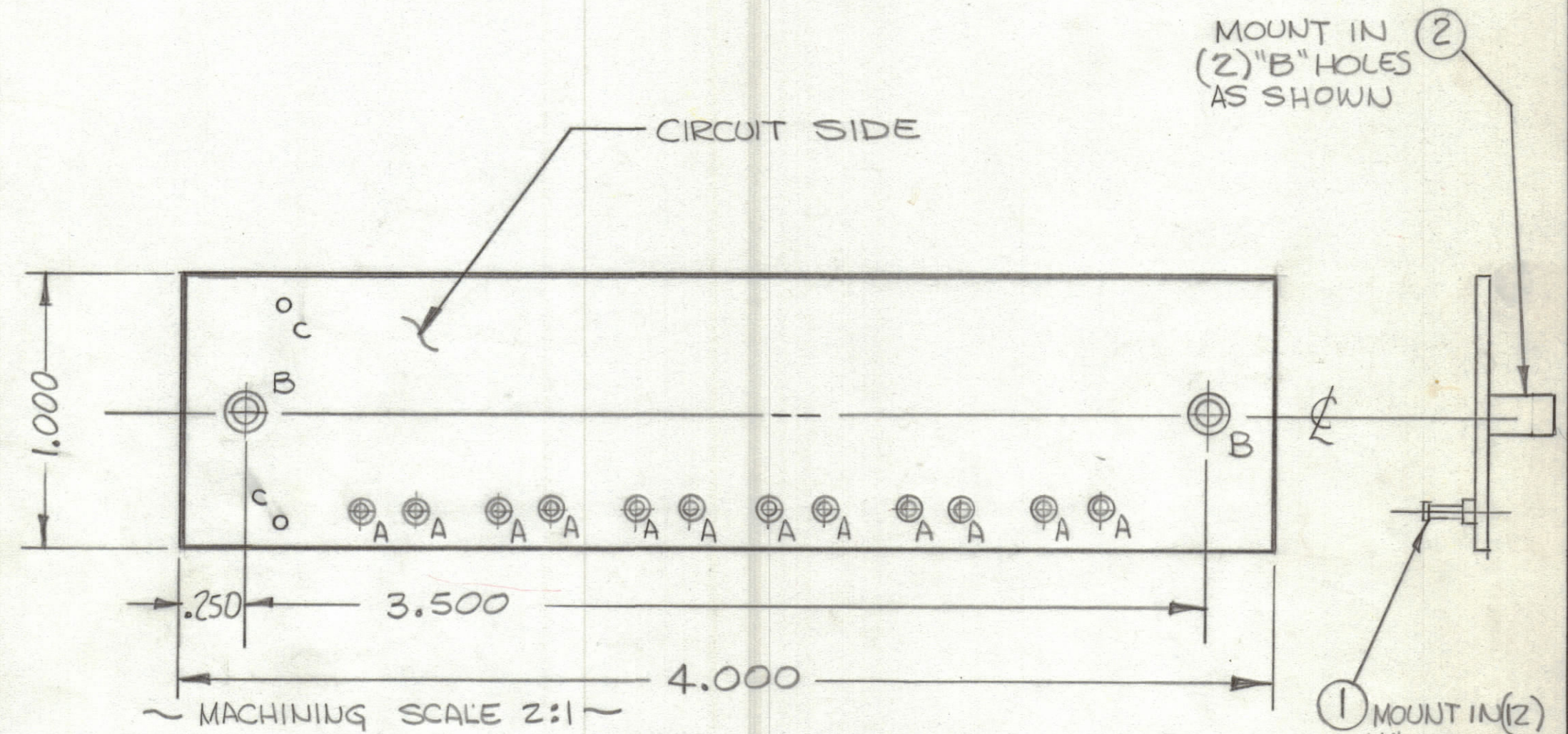


REVISIONS						
ZONE	LTR	DESCRIPTION	DATE	E.M.N.NO	DRAFT	CHKD APPD
	Ø	ORIGINAL RELEASE FOR PRODUCTION	8/24/73		CL	
	A	LINE CIRCUIT REVISED	12-17-73	21113	R6	Ø Ø
	B	ITEM 2 WAS TE 164-6, 2C HOLES ADD	6-30-76	21424	GDL	Ø Ø



Hole	DESCRIPTION	Req
A	.081 DIA	12
B	.189 DIA	2
	UNMARKED HOLES .052 DIA	
C	.062 DIA.	2

THIS IS NOT ORIGINAL ARTWORK
THIS IS TO BE USED FOR REF ONLY

- FABRICATION NOTES
TO BE MANUFACTURED IN ACCORDANCE WITH TMC SPEC 5735 SPECIFICALLY
- OVERALL MATERIAL THICKNESS $.062 \pm .006$ AS PER PP 3.1, 3.2
 - CONDUCTOR PATTERN TO BE COPPER FOIL AS PER PP 4.1.
PLATING TO BE TIN LEAD AS PER PP 13.2.2, 13.2.1
 - MATERIAL TO BE G10 GLASS EPOXY, LAMINATE 2 OZ COPPER
SINGLE SIDED

(REF SYMBOL A107)

QTY. REQ.	ITEM	PART NO.	DESCRIPTION	SYMBOL
2	2	TE108-1	NUT, PLAIN CLINCH	B
12	1	TE127-2	TERMINAL, STUD	A

LIST OF MATERIAL			
THE TECHNICAL MATERIEL CORP. MAMARONECK, NEW YORK			
PRINTED CIRCUIT BOARD INDICATOR (6)			
SIZE	CODE IDENT. NO.	DWG NO.	ISSUE
C	82679	PC671	B
SCALE			SHEET OF

QTY / UNIT	MODEL USED ON	ASSY NO.
	ATSA-3	A4945
APPLICATION		
CODE		
<small>NOTICE TO PERSONS RECEIVING THIS DRAWING</small> <small>THE TECHNICAL MATERIEL CORPORATION claims proprietary right in the material disclosed hereon. This drawing is issued in confidence for engineering information only and may not be reproduced or used to manufacture anything shown hereon without permission from THE TECHNICAL MATERIEL CORPORATION to the user. This drawing is loaned for mutual assistance and is subject to recall at any time.</small>		

UNLESS OTHERWISE SPECIFIED DIMENSIONS ARE IN INCHES AND INCLUDE CHEMICALLY APPLIED OR PLATED FINISHES	FINAL APPROVAL <i>[Signature]</i>	DATE 8-7-73
TOLERANCES ON DECIMALS .X ± .05 .XX ± .01 .XXX ± .005 FRACTIONS ± 1/64 ANGLES ± 0° -30'	MECH. DES. <i>[Signature]</i>	DATE 8-7-73
	ELECT. DES. <i>[Signature]</i>	DATE 8-7-73
	CHECKED <i>[Signature]</i>	DATE 8-7-73
MATERIAL	DRAWN <i>[Signature]</i>	DATE 8-7-73
FINISH		