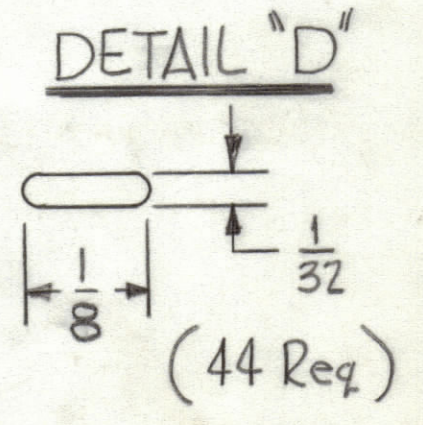
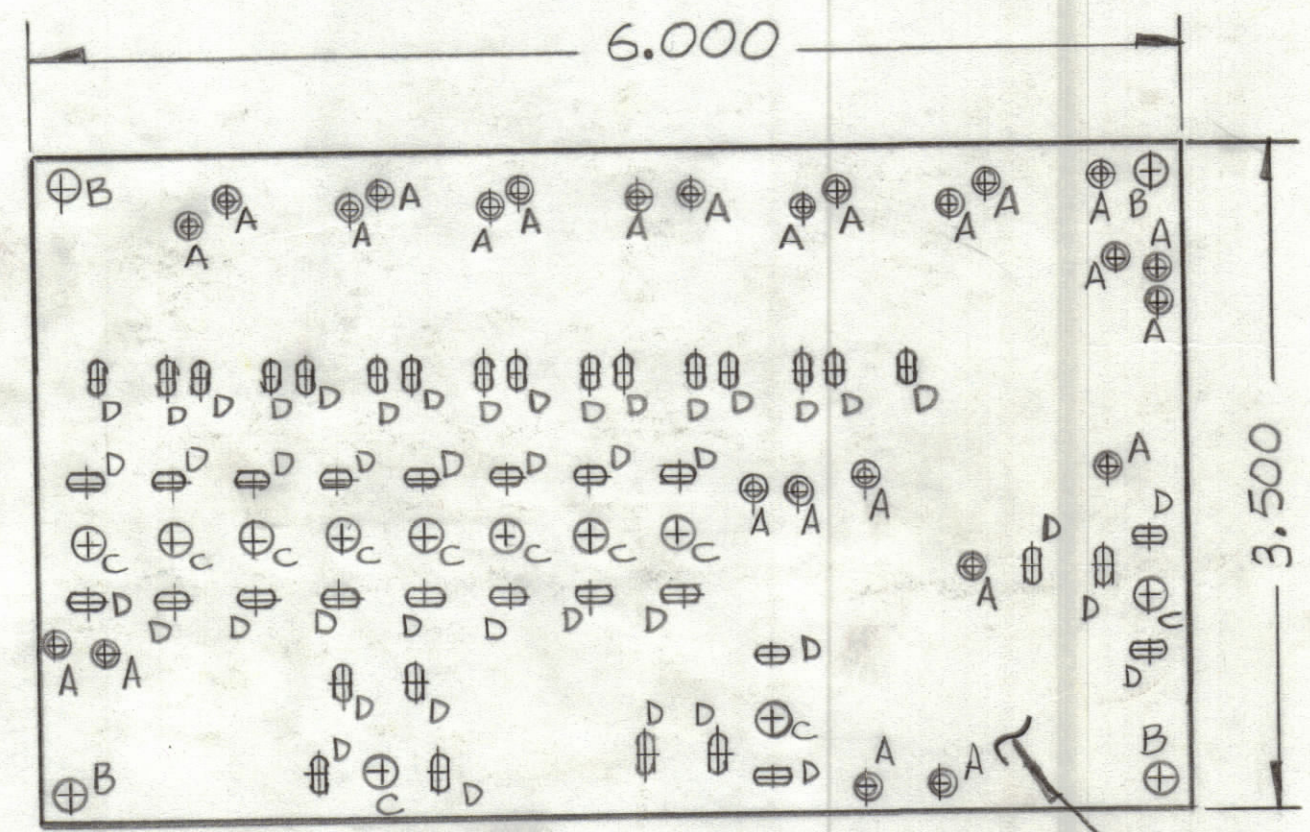


REVISIONS						
ZONE	LTR	DESCRIPTION	DATE	E.M.N.O	DRAFT	CHKD APPD
	XI	CR2, 9, OUTPUT 20 Added, RIGHT SIDE COMP MOUNTING Holes Revised, Placement Clarified	1-19-73	~		
	0	ORIGINAL RELEASE FOR PRODUCTION	3/2/74		D.V.	

① MOUNT IN ALL "A" HOLES
25 REQ
(TO BE MOUNTED ON CIRCUIT SIDE)



Hole	Description	Req.
A	.076 DIA.	25
B	1/8 DIA	4
C	9/64 DIA	11
D	SEE DETAIL "D"	44
UNMARKED HOLES .042D		

THIS IS NOT ORIGINAL ARTWORK
THIS IS TO BE USED FOR REF ONLY

- FABRICATION NOTES:
TO BE MANUFACTURED IN ACCORDANCE WITH TMC SPEC S735
1. OVERALL MAT. THICKNESS .062±.006 AS PER PP3.1, 3.2.1
 2. CONDUCTOR PATTERN TO BE COPPER FOIL AS PER PP4.1 PLATING TO BE TIN LEAD AS PER PP13.2.2, 13.2.1
 3. MAT. TO BE GIO GLASS EPOXY, LAMINATE 2OZ COPPER (2 SIDES)
 4. ALL HOLES TO BE PLATED-THRU AS PER 8.9.5

QTY / UNIT	MODEL USED ON	ASS'Y NO.
	TMR-1	A4933
	TME-1	A4933
	TM125	A4933

APPLICATION

CODE

NOTICE TO PERSONS RECEIVING THIS DRAWING
THE TECHNICAL MATERIEL CORPORATION claims proprietary right in the material disclosed hereon. This drawing is issued in confidence for engineering information only and may not be reproduced or used to manufacture anything shown hereon without permission from THE TECHNICAL MATERIEL CORPORATION to the user. This drawing is loaned for mutual assistance and is subject to recall at any time.

UNLESS OTHERWISE SPECIFIED DIMENSIONS ARE IN INCHES AND INCLUDE CHEMICALLY APPLIED OR PLATED FINISHES

TOLERANCES ON

DECIMALS	FRACTIONS
.X ± .05	± 1/64
.XX ± .01	ANGLES
.XXX ± .005	± 0° -30'

QTY. REQ.	ITEM	PART NO.	DESCRIPTION	SYMBOL
25	1	TE168-1-B	TERMINAL, MINATURE	A

FINAL APPROVAL	DATE
<i>O Rose</i>	
MECH. DES.	DATE
<i>R U 870</i>	11-25-72
ELECT. DES.	DATE
CHECKED	DATE
DRAWN	DATE
<i>R U 110</i>	11-25-72

LIST OF MATERIAL

THE TECHNICAL MATERIEL CORP.
MAMARONECK, NEW YORK

PRINTED CIRCUIT BD
(8 XTAL OSCILATOR)

SIZE	CODE IDENT.NO.	DWG NO.	ISSUE
C	82679	PC659	0

SCALE SHEET OF