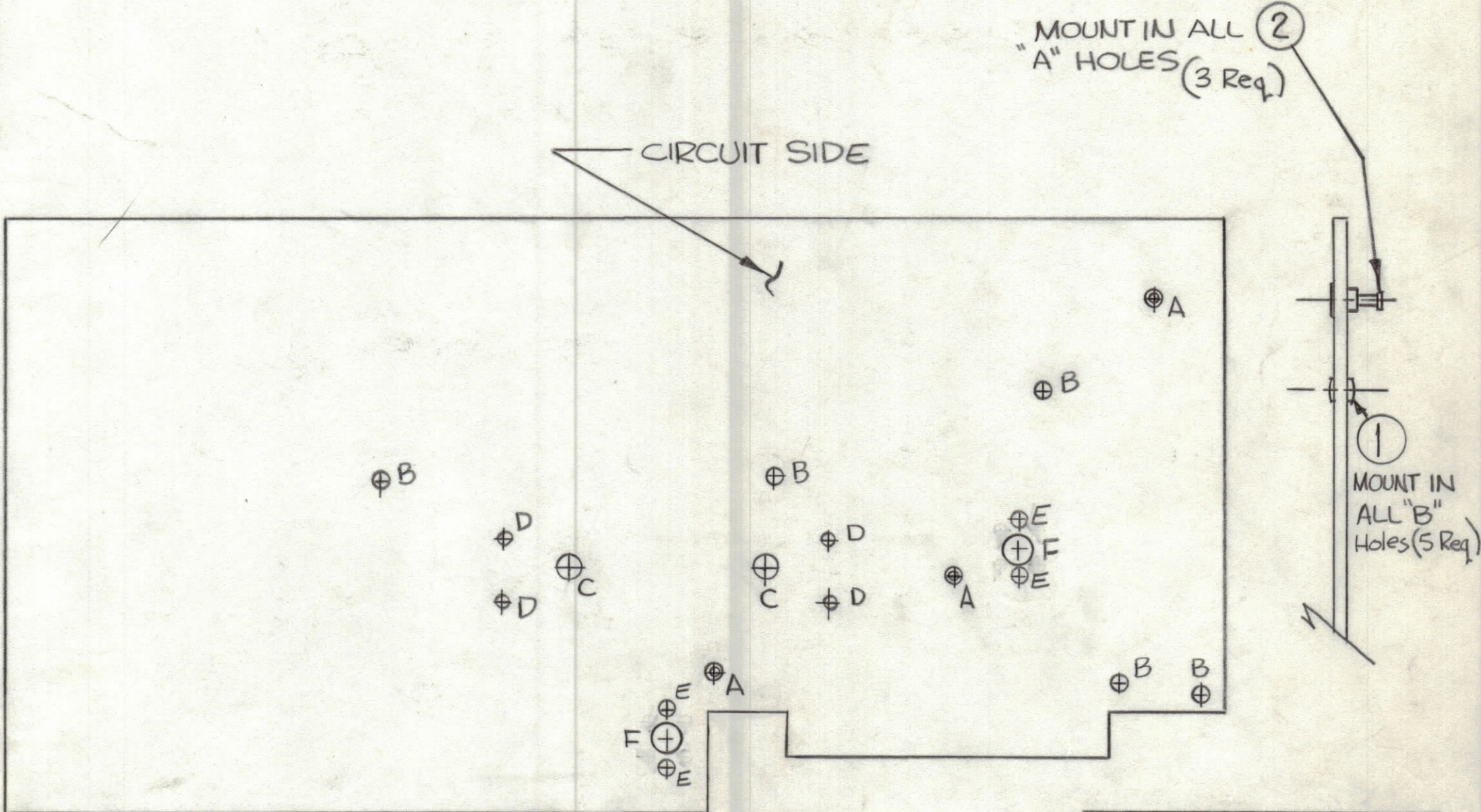


REVISIONS						
ZONE	LTR	DESCRIPTION	DATE	E.M.N.NO	DRAFT	CHKD APPD
	Ø		12-8-72		el	
	A	LANDS DELETED FOR C23	11-30-77	21030	RU	WJH +



FOR FABRICATION SEE S1125

- 1, EXCEPT FOR HOLES SHOWN IN CHART, USE S1125
- 2, HOLES ON THIS BOARD WILL NOT BE PLATED -THRU

Hole	Description	Req
A	.081 DIA	3
B	.052 DIA	5
C	.140 DIA	2
D	.062 DIA	4
E	.069 DIA	4
F	.281 DIA	2

THIS IS NOT ORIGINAL ARTWORK
THIS IS TO BE USED FOR REF ONLY

QTY. REQ.	ITEM	PART NO.	DESCRIPTION	SYMBOL
3	2	TE127-2	TERMINAL, STUD	A
5	1	EY103	EYELET	B

LIST OF MATERIAL

UNLESS OTHERWISE SPECIFIED DIMENSIONS ARE IN INCHES AND INCLUDE CHEMICALLY APPLIED OR PLATED FINISHES		FINAL APPROVAL	DATE
TOLERANCES ON		MECH. DES.	DATE
DECIMALS	FRACTIONS	ELECT. DES.	DATE
.X ± .05	± 1/64	CHECKED	DATE
.XX ± .01	ANGLES	DRAWN	DATE
.XXX ± .005	± 0° -30'		

THE TECHNICAL MATERIEL CORP.
MAMARONECK, NEW YORK

PRINTED CIRCUIT BD.
(1.25 MHz GEN)

1	CHG-4C	A4698
QTY / UNIT	MODEL USED ON	ASS'Y NO.
APPLICATION		
CODE		

MATERIAL	FINISH	SCALE	CODE IDENT.NO.	DWG NO.	ISSUE
			C 82679	PC656	A
		SHEET	OF		

NOTICE TO PERSONS RECEIVING THIS DRAWING
THE TECHNICAL MATERIEL CORPORATION claims proprietary right in the material disclosed hereon. This drawing is issued in confidence for engineering information only and may not be reproduced or used to manufacture anything shown hereon without permission from THE TECHNICAL MATERIEL CORPORATION to the user. This drawing is loaned for mutual assistance and is subject to recall at any time.