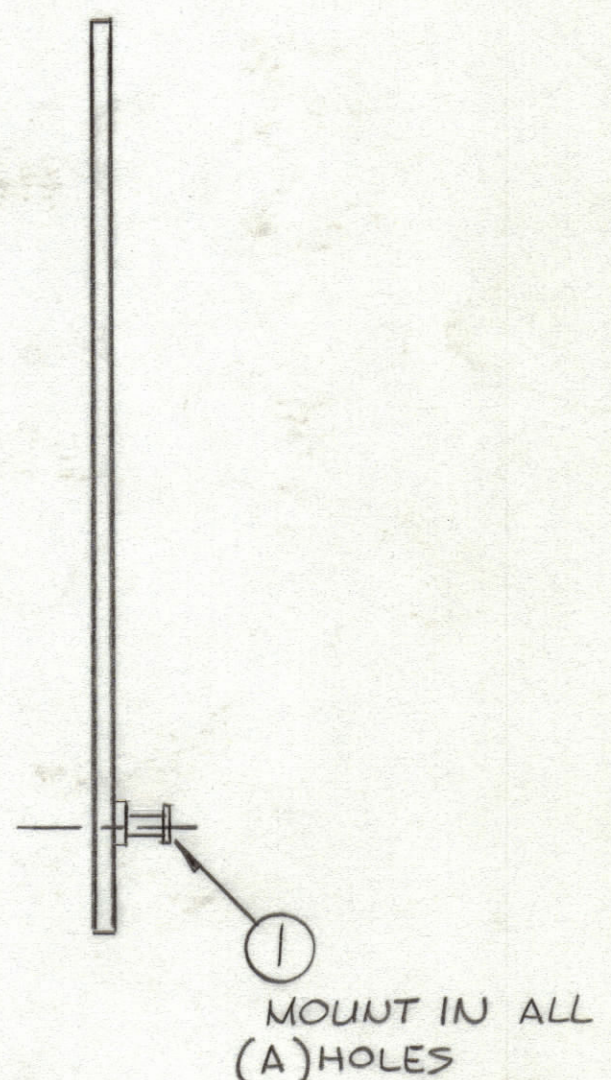
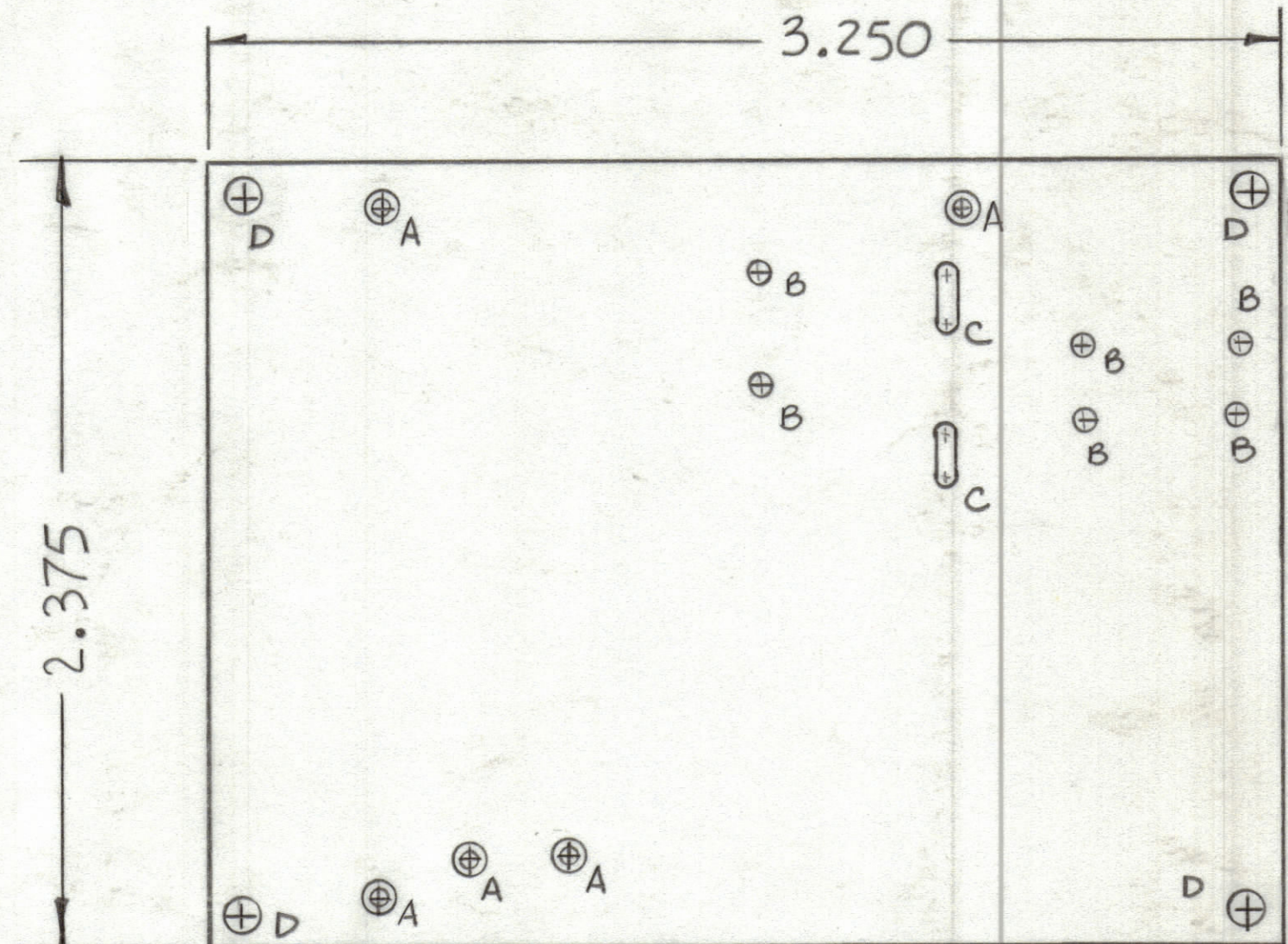


REVISIONS						
ZONE	LTR	DESCRIPTION	DATE	E.M.N.NO	DRAFT	CHKD
	A	CR16, C30, C31, R47 Added	3-24-77	21509		

NOTE:

- FABRICATION NOTES SEE S735
1. OVERALL MATERIAL THICKNESS $.062 \pm .006$ AS PER PP 3.1, 3.2.
 2. CONDUCTOR PATTERN TO BE COPPER FOIL AS PER PP 4.1
 3. MATERIAL: G10 GLASS EPOXY LAMINATE 2 OZ COPPER. SINGLE SIDE.



SCALE 2:1

Hole	DESCRIPTION	REQ
A	.081 DIA	5
B	.093 DIA	6
C	See Detail	2
D	11/64 DIA.	4

UNMARKED HOLES .042 DIA

QTY. REQ.	ITEM	PART NO.	DESCRIPTION	SYMBOL
5	1	TE127-2	TERMINAL STUD	

LIST OF MATERIAL

THE TECHNICAL MATERIEL CORP.
MAMARONECK, NEW YORK

1	HFE-1, SME-6	A4906
QTY / UNIT	MODEL USED ON	ASS'Y NO.
APPLICATION		
CODE		

UNLESS OTHERWISE SPECIFIED DIMENSIONS ARE IN INCHES AND INCLUDE CHEMICALLY APPLIED OR PLATED FINISHES		FINAL APPROVAL F.B.	DATE 3-24-77
TOLERANCES ON		MECH. DES. [Signature]	DATE 2-23-77
DECIMALS	FRACTIONS	ELECT. DES.	DATE 2-
.X ± .05	± 1/64	CHECKED [Signature]	DATE 2-23-77
.XX ± .01	ANGLES	DRAWN [Signature]	DATE 2-23-77
.XXX ± .005	± 0°-30'		

PRINTED CIRCUIT Bd.
FREQ SHIFTING

NOTICE TO PERSONS RECEIVING THIS DRAWING
THE TECHNICAL MATERIEL CORPORATION claims proprietary right in the material disclosed herein. This drawing is issued in confidence for engineering information only and may not be reproduced or used to manufacture anything shown hereon without permission from THE TECHNICAL MATERIEL CORPORATION to the user. This drawing is loaned for mutual assistance and is subject to recall at any time.

SIZE	CODE IDENT.NO.	DWG NO.	ISSUE
C	82679	PC620	A
SCALE	SHEET		OF

A PC620