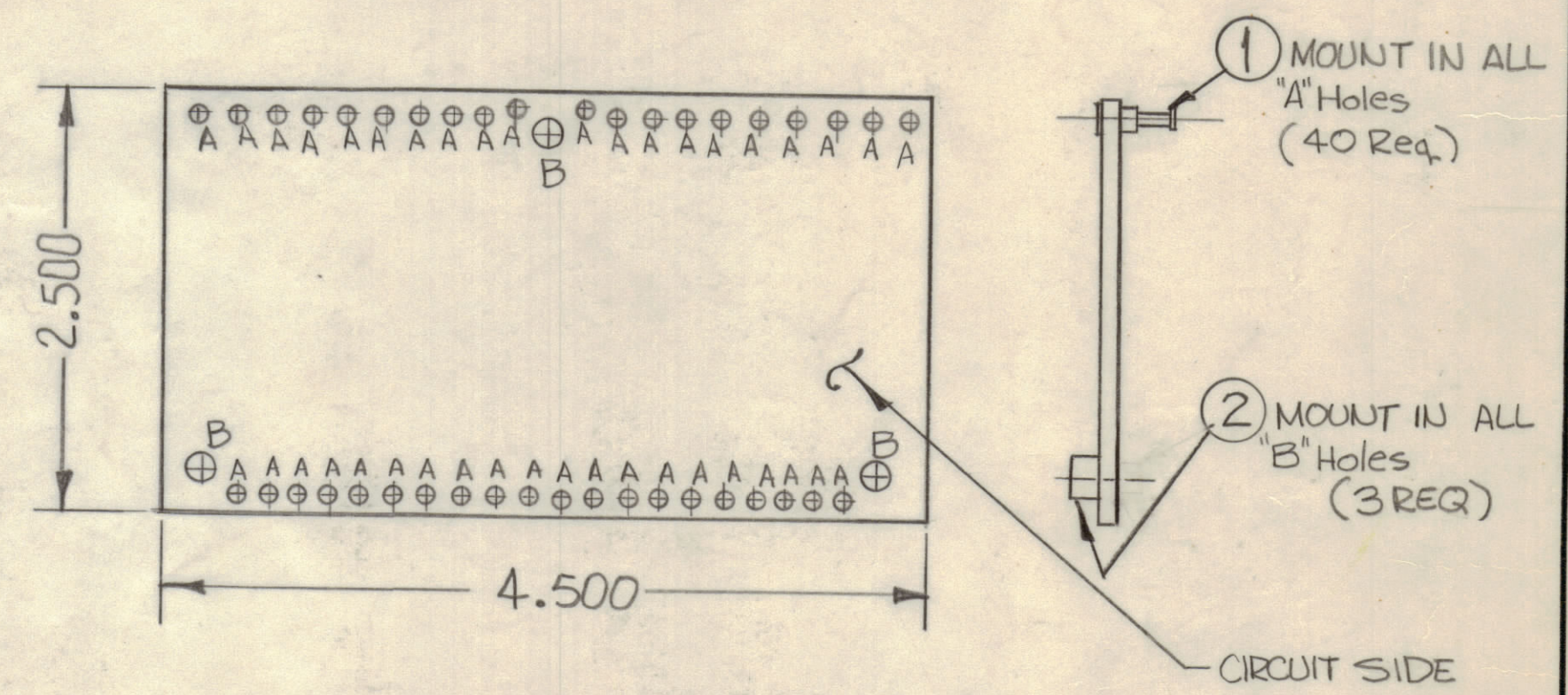


					REVISIONS		
E.M.N.NO	DRAFT	CHKD	ZONE	LTR	DESCRIPTION	DATE	APPROVED
	0				ORIGINAL RELEASE FOR PRODUCTION	6-23-71	J.E.S.
20459				A	MACHINING PICTORIAL CLARIFIED (Item 2)	12-21-71	EJ



HOLE	DESCRIPTION	REQ
A	.081 DIA	40
B	.189 DIA	3
	UNMARKED .042 DIA.	~

THIS IS NOT ORIGINAL ARTWORK  
THIS TO BE USED FOR REF ONLY

**FABRICATION NOTES**  
TO BE MANUFACTURED IN ACCORDANCE WITH TMC SPEC 3735 AND SPECIFICALLY

- OVERALL MATERIAL THICKNESS .062 ± .006 AS PER PP 3.1, 3.2
- CONDUCTOR PATTERN TO BE COPPER FOIL AS PER PP 4.1  
PLATING TO BE TIN LEAD AS PER PP 3.2.2, 13.2.1
- HOLES TO BE PLATED THRU AS PER PP 8.9.5.
- MATERIAL: GIO GLASS EPOXY, LAMINATE 2 OZ COPPER CLAD.

KIT368 (MMA-2A)		
QTY / UNIT	MODEL USED ON	ASS'Y NO.
APPLICATION		
CODE		

**NOTICE TO PERSONS RECEIVING THIS DRAWING**  
THE TECHNICAL MATERIEL CORPORATION claims proprietary right in the material disclosed hereon. This drawing is issued in confidence for engineering information only and may not be reproduced or used to manufacture anything shown hereon without permission from THE TECHNICAL MATERIEL CORPORATION to the user. This drawing is loaned for mutual assistance and is subject to recall at any time.

UNLESS OTHERWISE SPECIFIED  
DIMENSIONS ARE IN INCHES  
AND INCLUDE CHEMICALLY APPLIED  
OR PLATED FINISHES

**TOLERANCES ON**

DECIMALS	FRACTIONS
.X ± .05	± 1/64
.XX ± .01	ANGLES
.XXX ± .005	± 0° -30'

QTY. REQ.	ITEM	PART NO.	DESCRIPTION	SYMBOL
3	2	TE108-6	TERMINAL, STANDOFF	B
40	1	TE127-2	TERMINAL, STUD	A

LIST OF MATERIAL

**THE TECHNICAL MATERIEL CORP.**  
MAMARONECK, NEW YORK

PRINTED CIRCUIT BD  
FILTER, LINE

FINAL APPROVAL	DATE
<i>[Signature]</i>	6-22-71
MECH. DES.	DATE
<i>[Signature]</i>	6-21-71
ELECT. DES.	DATE
CHECKED	DATE
DRAWN	DATE
<i>[Signature]</i>	6-21-71

MATERIAL	SIZE	CODE IDENT NO.	DWG NO.	ISSUE
FINISH	C	82679	PC608	A
	SCALE	SHEET OF		