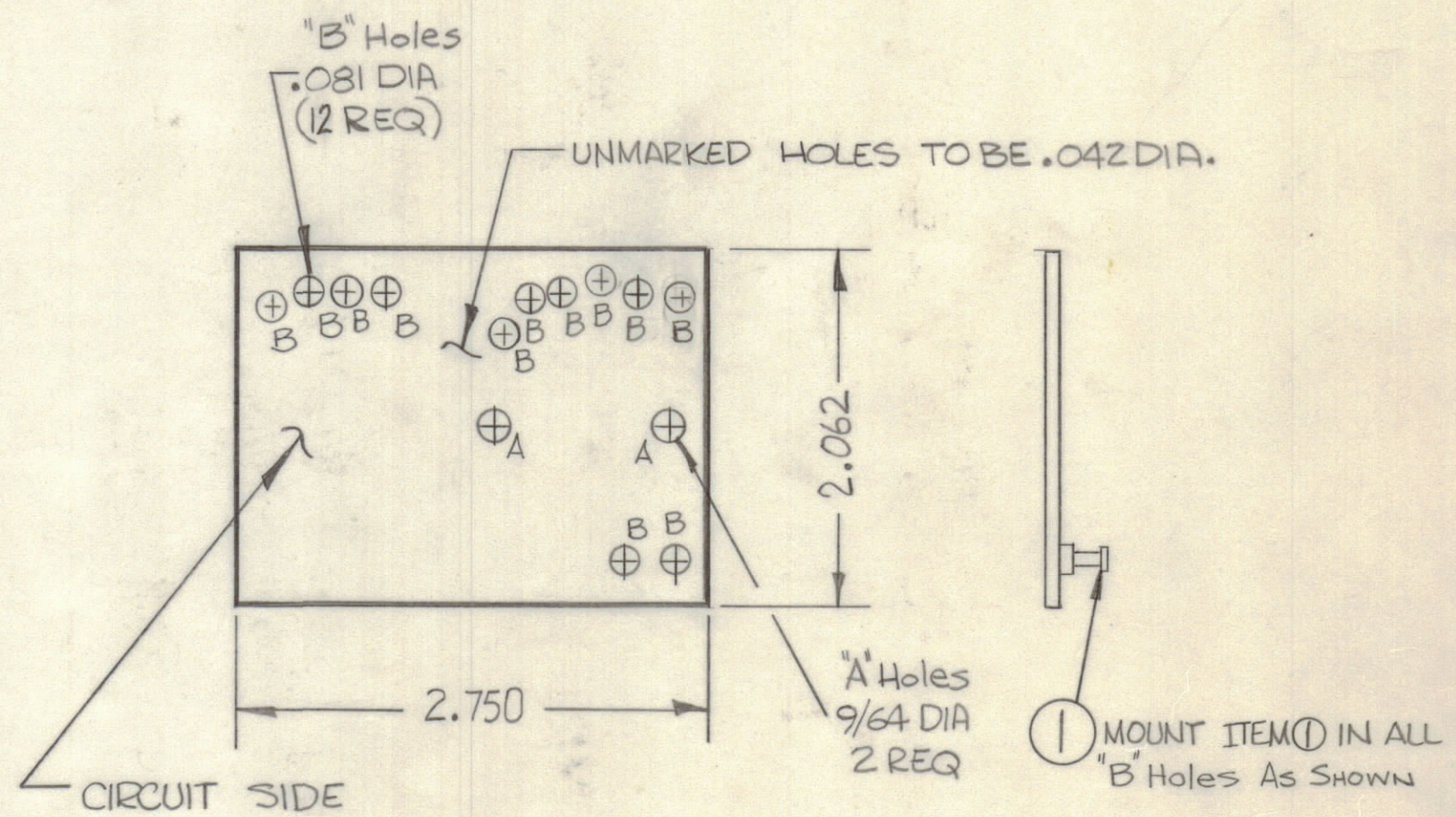
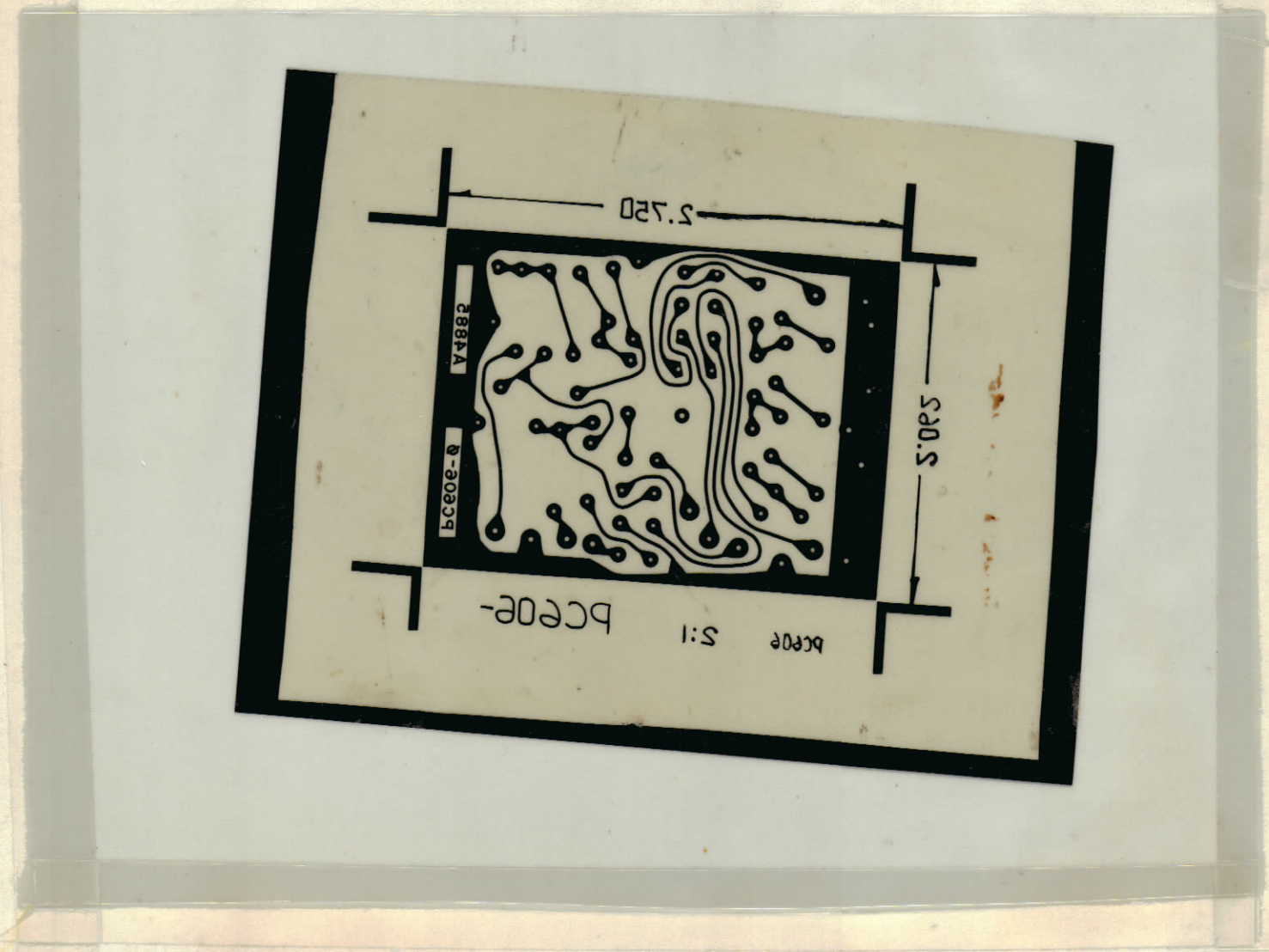


					REVISIONS		
E.M.N.NO	DRAFT	CHKD	ZONE	LTR	DESCRIPTION	DATE	APPROVED
	XXX			X	EXP Release	4-26-71	
	XXX			X ¹	L2607, +28V Output Added,	4-27-71	
	XXX			X ²	L2607, C2609 Deleted, K2602 NC Modified	6-10-71	
	W			Ø	ORIGINAL RELEASE FOR PRODUCTION	6-23-71	P.E.A.



THIS IS NOT ORIGINAL ARTWORK
THIS IS TO BE USED FOR REF ONLY

- FABRICATION NOTES:
1. OVERALL MATERIAL THICKNESS $.062 \pm .0062$ AS PER (PP 3.1, 3.2).
 2. CONDUCTOR PATTERN TO BE COPPER FOIL AS PER PP 4.1 PLATING TO BE TIN LEAD AS PER (PP 3.2.2, 13.2.1)
 3. MATERIAL: GIO GLASS EPOXY, LAMINATE 2 OZ, COPPER CLAD (ONE SIDE)

1	MMXA-2A (KIT 368)	A4885
QTY / UNIT	MODEL USED ON	ASS'Y NO.
APPLICATION		
	CODE	
<small>NOTICE TO PERSONS RECEIVING THIS DRAWING</small> <small>THE TECHNICAL MATERIEL CORPORATION claims proprietary right in the material disclosed hereon. This drawing is issued in confidence for engineering information only and may not be reproduced or used to manufacture anything shown hereon without permission from THE TECHNICAL MATERIEL CORPORATION to the user. This drawing is loaned for mutual assistance and is subject to recall at any time.</small>		

UNLESS OTHERWISE SPECIFIED DIMENSIONS ARE IN INCHES AND INCLUDE CHEMICALLY APPLIED OR PLATED FINISHES		FINAL APPROVAL <i>[Signature]</i>	DATE 6-22-71
TOLERANCES ON		MECH. DES. <i>[Signature]</i>	DATE 4-26-71
DECIMALS	FRACTIONS	ELECT. DES.	DATE
.X $\pm .05$	$\pm 1/64$	CHECKED	DATE
.XX $\pm .01$	ANGLES	DRAWN <i>[Signature]</i>	DATE 4-26-71
.XXX $\pm .005$	$\pm 0^\circ - 30'$		
MATERIAL	~		
FINISH	~		

12	1	TE127-2	TERMINAL STUD	B
QTY. REQ.	ITEM	PART NO.	DESCRIPTION	SYMBOL
LIST OF MATERIAL				
THE TECHNICAL MATERIEL CORP. MAMARONECK, NEW YORK PRINTED CIRCUIT BD.				
SIZE	CODE	IDENT NO.	DWG NO.	ISSUE
C	82679	PC606		Ø
SCALE			SHEET	OF