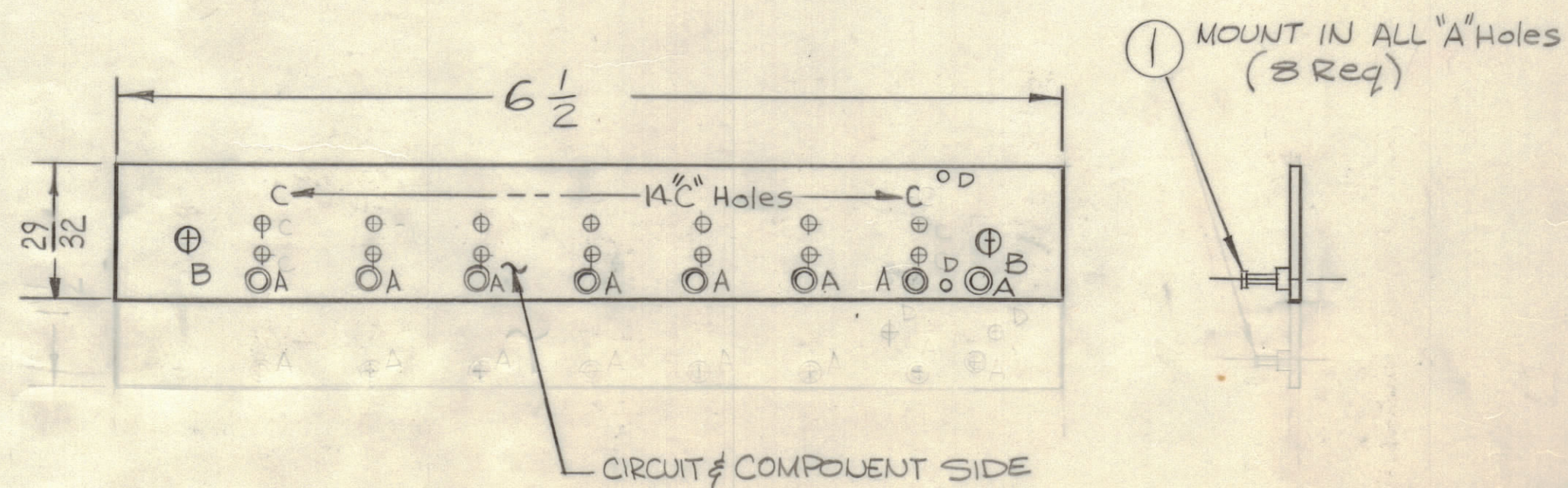
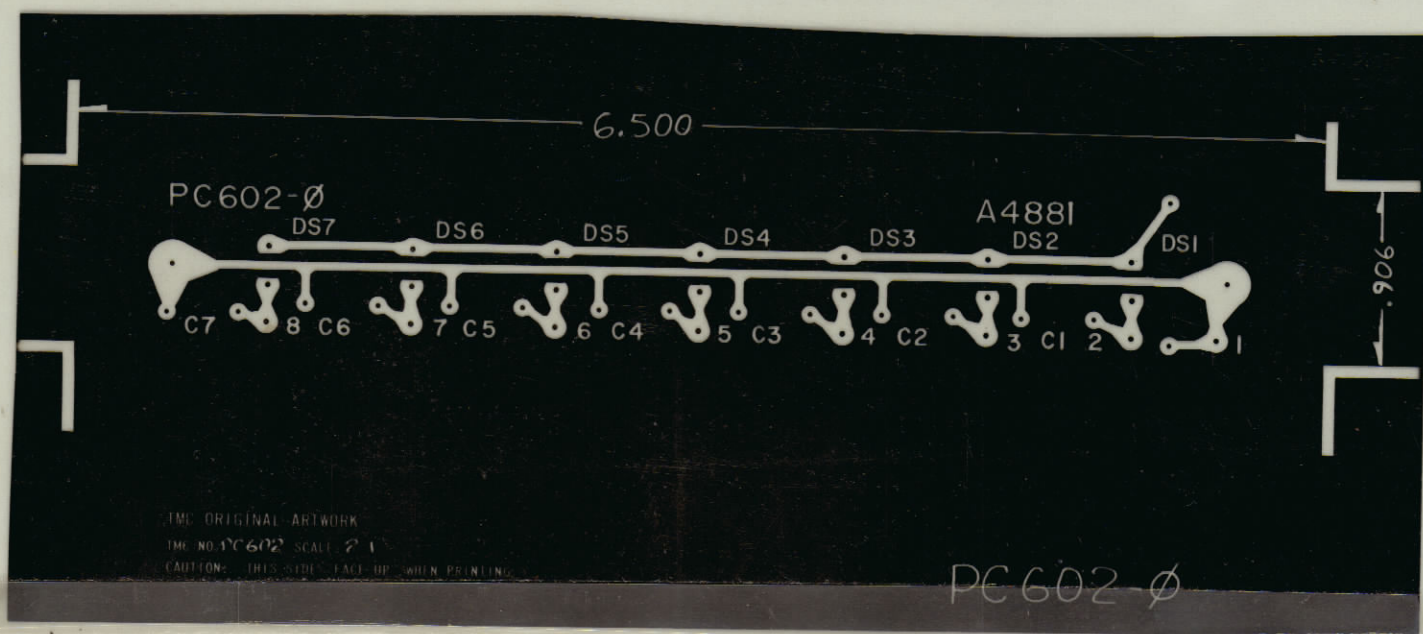


REVISIONS							
E.M.N.NO	DRAFT	CHKD	ZONE	LTR	DESCRIPTION	DATE	APPROVED
	RG			X	EXP RELEASE	3-24-71	
	RG			Ø	ORIG. RELEASE FOR PRODUCTION	10/8/71	



HOLE	DESCRIPTION	REQ
A	.081 DIA	8
B	11/64 DIA	2
C	.032 DIA	14
D	.062 DIA	2
~	.042 DIA (UNMARKED)	~

THIS IS NOT ORIGINAL ARTWORK
THIS IS TO BE USED FOR REF ONLY

FABRICATION NOTES

- 1. OVERALL MATERIAL THICKNESS .062 ± .0062 AS PER PP3.1, 3.2.
- 2. CONDUCTOR PATTERN TO BE COPPER FOIL AS PER PP4.1 PLATING TO BE TIN LEAD AS PER PPB.2.2, 13.2.1
- 3. MATERIAL: G10 GLASS EPOXY; LAMINATE 2 OZ COPPER CLAD (1) ONE SIDE

1	TFP-1K	A4881
QTY / UNIT	MODEL USED ON	ASS'Y NO.
APPLICATION		
CODE		
NOTICE TO PERSONS RECEIVING THIS DRAWING THE TECHNICAL MATERIEL CORPORATION claims proprietary right in the material disclosed hereon. This drawing is issued in confidence for engineering information only and may not be reproduced or used to manufacture anything shown hereon without permission from THE TECHNICAL MATERIEL CORPORATION to the user. This drawing is loaned for mutual assistance and is subject to recall at any time.		

UNLESS OTHERWISE SPECIFIED DIMENSIONS ARE IN INCHES AND INCLUDE CHEMICALLY APPLIED OR PLATED FINISHES

TOLERANCES ON
 DECIMALS .X ± .05
 .XX ± .01
 .XXX ± .005
 FRACTIONS ± 1/64
 ANGLES ± 0° -30'

MATERIAL SEE NOTES
 FINISH

8	A	TE127-2	TERMINAL, STUD	A
QTY. REQ.	ITEM	PART NO.	DESCRIPTION	SYMBOL
LIST OF MATERIAL				
FINAL APPROVAL <i>[Signature]</i> DATE 29 Sep 71 MECH. DES. <i>[Signature]</i> DATE 3-24-71 ELECT. DES. DATE CHECKED DATE DRAWN <i>[Signature]</i> DATE 3-24-71				
THE TECHNICAL MATERIEL CORP. MAMARONECK, NEW YORK PRINTED CIRCUIT BOARD IND LIGHTS				
SIZE	CODE IDENT NO.	DWG NO.	ISSUE	
C	82679	PC602	Ø	
SCALE				SHEET OF