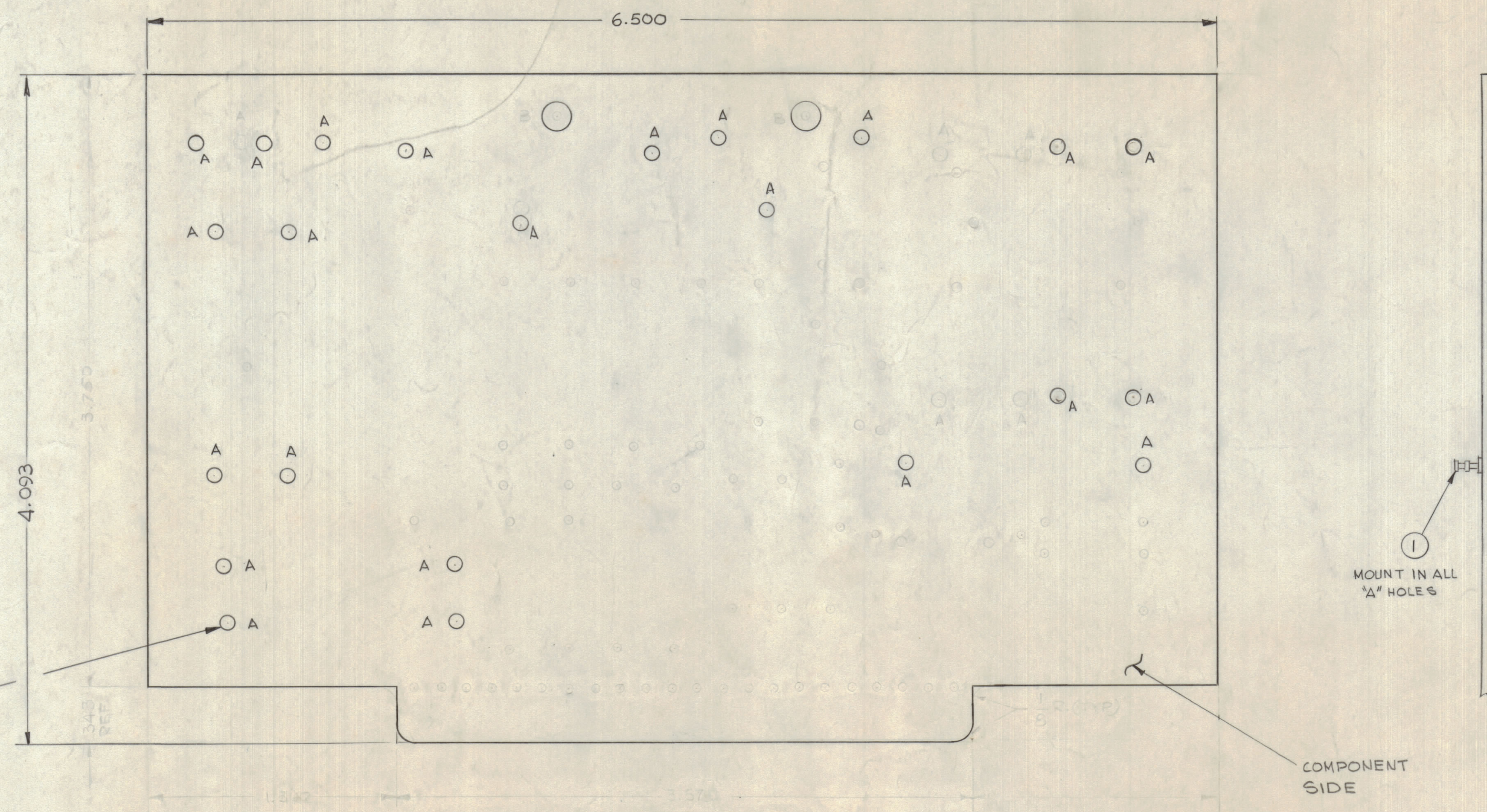


REVISIONS						
ZONE	BYM	DESCRIPTION	DATE	E.M.N. NO.	DRAFT	CHKD
X1		SEE SHEET (1)	12-6-65			
X2		SEE SHEET (1)	12-22-65			
X3		SEE SHEET (1), NOTE S1090 ADDED	1-27-66			
		ORIGINAL RELEASE FOR PRODUCTION	4-7-66			
A		C9 REVISED & RELOCATED	4-19-66	16108		



.091-.095 DIA.
(23 REQ)

HOLES	DESCRIPTION	REQ
A	.091-.095 DIA.	23
B	3/16 DIA.	2
	UNMARKED HOLES .052 DIA.	67

— FOR FABRICATION SEE S1090 —

- MANUFACTURED IN ACCORDANCE WITH TMC SPEC. 5735 AND SPECIFICALLY:
- 1- OVERALL MATERIAL THICKNESS .062 ± .002 AS PER (PPS 1, 3, 2)
 - 2- CONDUCTIVE PATTERN TO BE COPPER. FOIL AS PER (PPS 1, 1)
 - 3- PLATING TO BE TIN LEAD AS PER (PPS 2, 2, 13, 2, 1)
 - 4- EDGE BOARD CONNECTED FINGERS SHALL BE GOLD PLATED AS PER (PPS 1, 10, 4)
 - 5- HOLES TO BE PLATED THROUGH PER (PPS 1, 10, 4)
 - 6- HOLE SIZE FOR MOUNTING SEE SHEET (1) & (2). THIS IS 3 HOLES ON A BOARD.

NOTES

1	BTIH	A4390
SCALE	MODEL USED ON	ASSY. NO.
2:1		

23	1	TE127-6	TERMINAL, STUD	A
REQ'D	ITEM	PART NUMBER	DESCRIPTION	SYMBOL
LIST OF MATERIAL				
MATERIAL (SEE S1090)		THE TECHNICAL MATERIEL CORP. MAMARONECK, NEW YORK		
FINISH		TITLE PRINTED CIRCUIT BOARD		
UNLESS OTHERWISE SPECIFIED DIMENSIONS ARE IN INCHES AND INCLUDE CHEMICALLY APPLIED OR PLATED FINISHES		DRAWN G.D.L.	DATE 12-2-65	FINAL APPROVAL DATE
DECIMALS .X ± .05 .XX ± .01 .XXX ± .005		CHECKED V.L.H.W.	DATE 4-4-66	DATE 4/4/66
TOLERANCES ± 1/64 ANGLES ± 0° 30'		ELECT. DES. V.L.H.W.	DATE 4/4/66	DATE 4/4/66
THE CONTENTS OF THIS DRAWING ARE THE EXCLUSIVE PROPERTY OF THE TECHNICAL MATERIEL CORP. ITS UNAUTHORIZED USE OR REPRODUCTION IN WHOLE OR IN PART IS STRICTLY FORBIDDEN.		PC265 A		
		SHEET 2 OF 2		

PC265 A