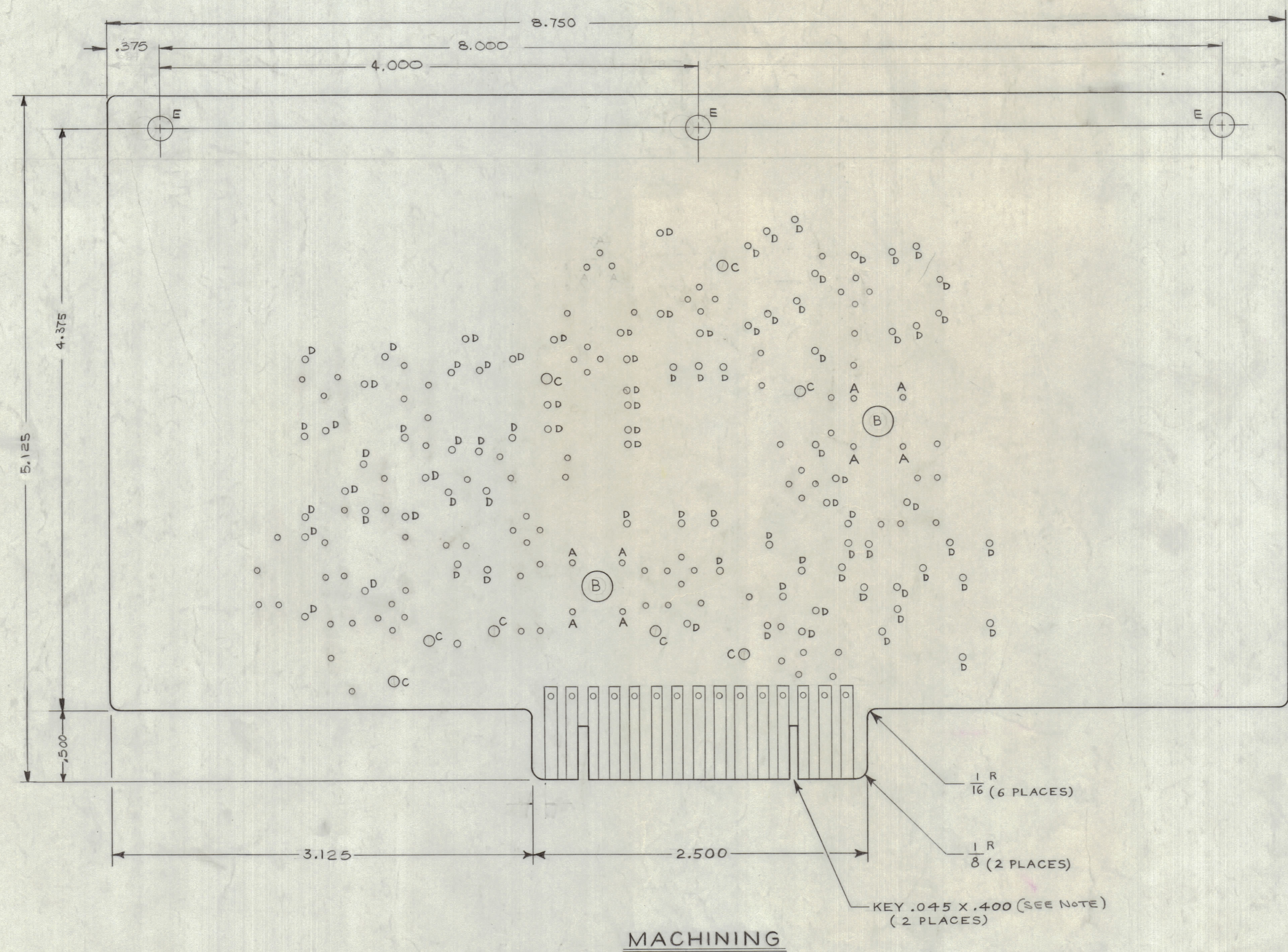


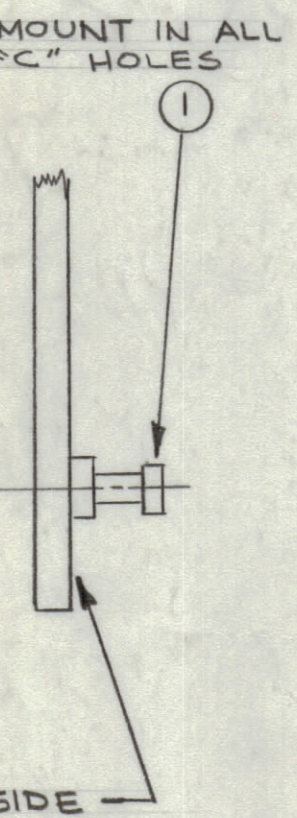
REVISIONS						
ZONE	SYM	DESCRIPTION	DATE	E.M.N. NO.	DRAFT	CHKD
X1		EXPERIMENTAL RELEASE	10-22-64		N.P.	
X2		CAPACITOR POLARITY SYM. ADD. (6 PL.)	12-30-64	X2	3/4	
X3		(3) "A" HOLES DELETED; "D" HOLES WERE 77 REQ. UNMARKED HOLE QUAN. ITEM (1) ADDED SEE SHEET 1 OF 2 REVISION "X3" (3) "E" HOLES ADDED; DIM. 4.625 WAS 4.156	1-8-65	X3		
Ø		ORIGINAL RELEASE FOR PRODUCTION	4/1/65			
A		FABRICATION NOTE REVISED, DIMENSIONS REVISED, IT. 1 WAS TE127-3	5/25/64	14-124		



- FABRICATION NOTES
- MATERIAL THICKNESS .062 ± .0075 AS PER 3.2, 13.2.2
 - .040 DIA. PLATED THRU HOLES TO BE LOCATED IN THE CENTER OF EACH FINGER CONTACT .050 AWAY FROM THE MAIN BODY OF BOARD.
 - THE PRINTED CIRCUIT BOARD SHALL BE KEYED WITH SLOTS .050 - .070 WIDE & .400 HIGH LOCATED BETWEEN FINGER CONTACTS 2 & 3, 12 & 13. AS VIEWED FROM COMPONENT SIDE OF BOARD.
 - EDGE BOARD CONNECTOR (FINGER) SHALL BE GOLD PLATED 10.1 CONDUCTIVE PATTERN SHALL BE SOLDER COATED (PP13.3) & (PP13.3.1)
 - HOLES MARKED WITH * TO BE PLATED THRU (SEE HOLE LEGEND CHART) (PP11.4)
 - KEY SLOTS TO BE DEBURRED.
 - FOR SPARE PARTS USE ON MODEL LFSB-1, SERIAL #16336, THRU 16361 BOARD THICKNESS MUST BE .093(3/32) ± .0075, AND ITEM 1 MUST BE TE127-3.

HOLE	DESCRIPTION	REQ'D
A	#53 DR (.059) *	8
B	17/64 DR (.265)	2
C	#46 DR (.081) *	8
D	#55 DR (.052) *	85
UN-MARKED	#60 DR (.040) *	109
E	11/64 DIA.	3

* INDICATES PLATED-THRU HOLES



COMPONENT SIDE

MACHINING

- 1 R / 16 (6 PLACES)
- 1 R / 8 (2 PLACES)
- KEY .045 X .400 (SEE NOTE) (2 PLACES)

REF: A3789

8	1	TE127-2	TERMINAL, STUD	C
REQ'D.	ITEM	PART NUMBER	DESCRIPTION	SYMBOL
M. GELLMAN		LIST OF MATERIAL		
MATERIAL		SEE NOTE		
FINISH		—		
THE TECHNICAL MATERIEL CORP.		MAMARONECK, NEW YORK		
TITLE		PRINTED CIRCUIT BOARD		
QTY./UNIT	MODEL USED ON	ASS'Y. NO.	SCALE	DATE
1	LFSB-1	A3789	2:1	1-20-65
CODE	A			
THE CONTENTS OF THIS DRAWING ARE THE EXCLUSIVE PROPERTY OF THE TECHNICAL MATERIEL CORP. ITS UNAUTHORIZED USE OR REPRODUCTION IN WHOLE OR IN PART IS STRICTLY FORBIDDEN.		DECIMALS	FRACTIONS	ANGLES
		X ± .05	± 1/64	± 0° 30'
		XX ± .01		
		XXX ± .005		
DRAWN	DATE	FINAL APPROVAL	DATE	
M. Peter	10-21-64	J. Lee	4/1/65	
CHECKED	DATE			
	1-20-65			
ELECT. DES.	DATE	PC155		A
		SHEET 2 OF 2		REV. LTR.

NOTES

PC155