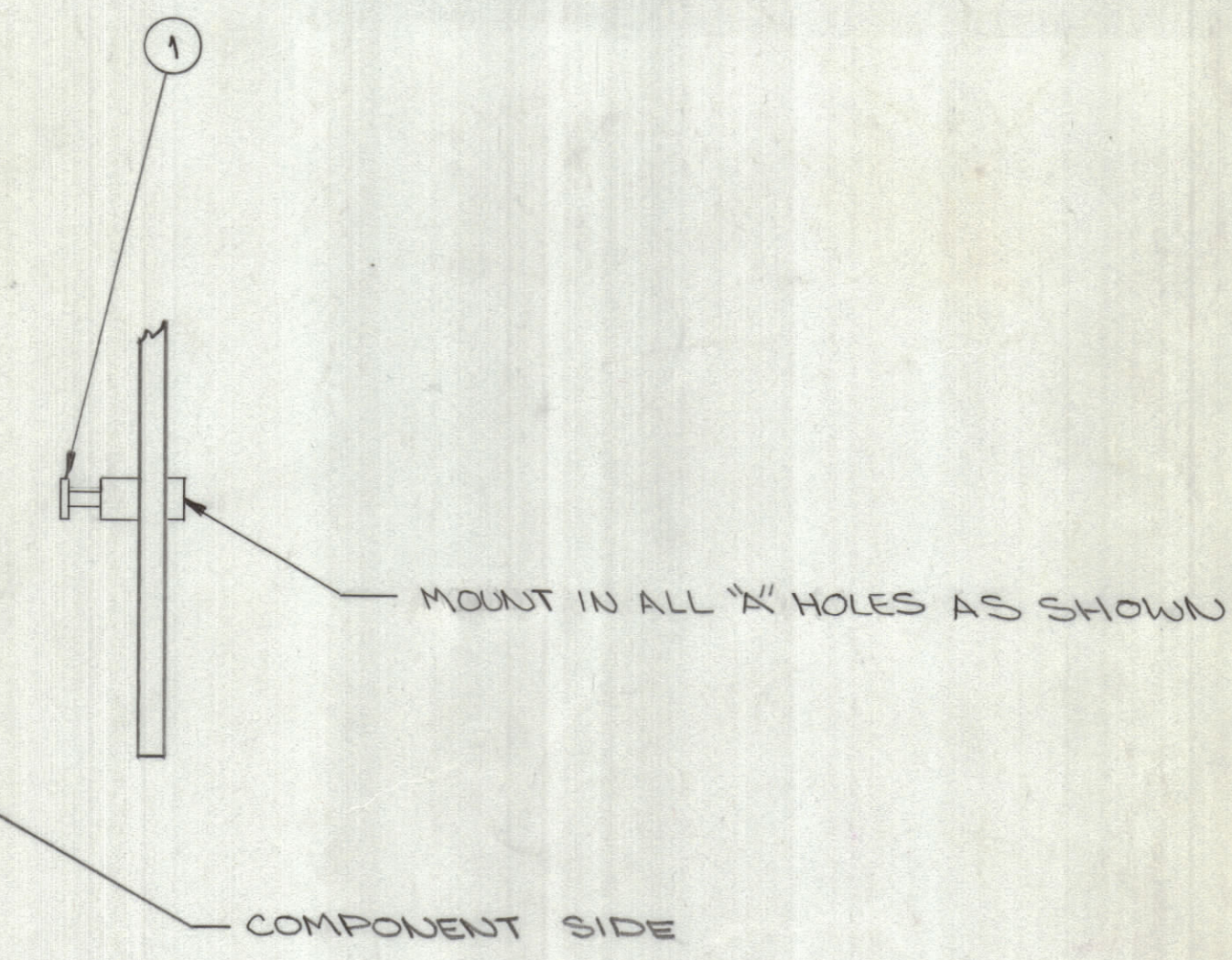
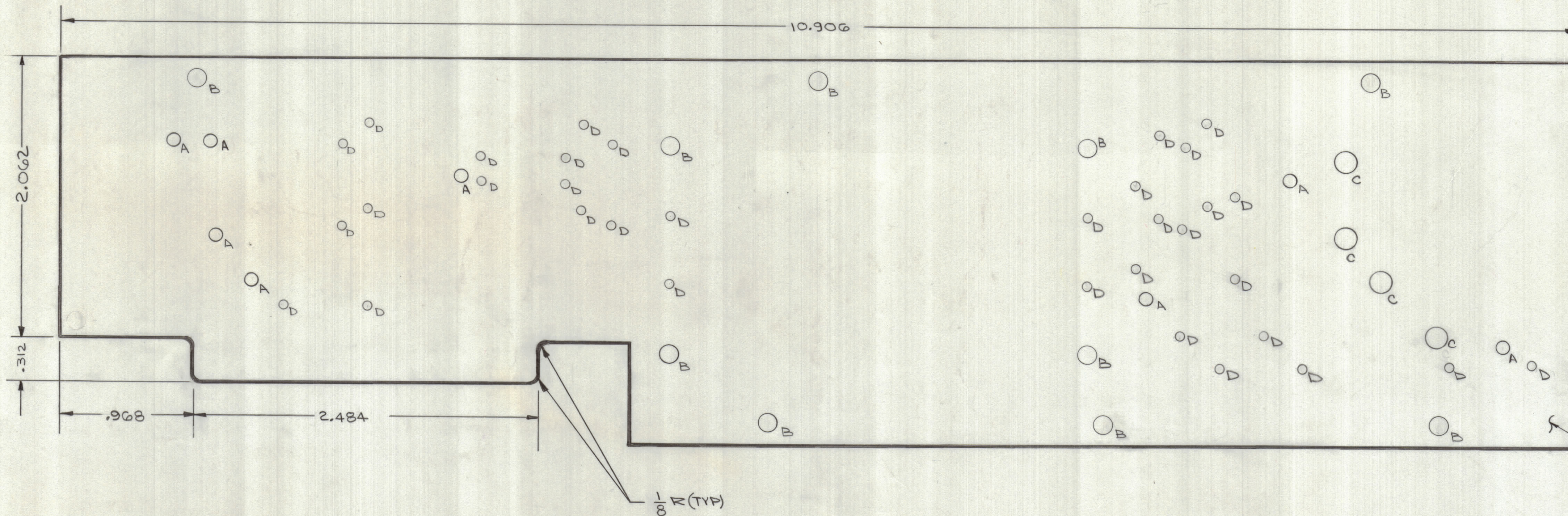


REVISIONS							
ZONE	SYM	DESCRIPTION	DATE	E.M.N. NO.	DRAFT	CHKD	APPD
X1		SHEET 2 ADDED	12-15-66				
		ORIGINAL RELEASE FOR PRODUCTION	2-15-66			G.D.L.	



HOLE LEGEND		
HOLE	DESCRIPTION	REQ
A	DRILL .085 DIA.	8
B	1/8 DIA. (.125)	10
C	5/32 DIA. (.156)	4
D	DRILL # 53 (.059 DIA.)	34
	UNMARKED # 60 DRILL (.040) *	

* SEE ARTWORK FOR LOCATION OF UNMARKED HOLES.

- NOTES:
- MATERIAL G-10 EPOXY GLASS LAMINATE 1/16 THK., 2-OUNCE COPPER CLAD BOTH SIDES.
 - PLATE .005 TO .001 NICKEL & .00008 MIN. GOLD ALL ETCHED SURFACES & PLATED-THRU HOLES
 - BOARD TO BE MANUFACTURED IN ACCORDANCE WITH TMC SPEC. S-735.

8	1	TE127-2	TERM. STUD	A
REQ'D.	ITEM	PART NUMBER	DESCRIPTION	SYMBOL
LIST OF MATERIAL				
MATERIAL		THE TECHNICAL MATERIEL CORP. MAMARONECK, NEW YORK		
FINISH		TITLE PRINTED CIRCUIT BOARD PRODUCT DETECTOR		
UNLESS OTHERWISE SPECIFIED DIMENSIONS ARE IN INCHES AND INCLUDE CHEMICALLY APPLIED OR PLATED FINISHES		DRAWN CANZA	DATE 4-23-66	FINAL APPROVAL DATE 9/1/66
DECIMALS X ± .05 XX ± .01 XXX ± .005		CHECKED J.L.	DATE 1/11/66	DATE
FRACTIONS ± 1/64 ANGLES ± 0° 30'		ELECT. DES.	DATE	DATE
MECH. DES.		DATE	DATE	DATE
SHEET 2 OF 2				REV. LTR.

1	LFCA-1	A3718
QTY/UNIT	MODEL USED ON	ASSY. NO.
SCALE	CODE	
THE CONTENTS OF THIS DRAWING ARE THE EXCLUSIVE PROPERTY OF THE TECHNICAL MATERIEL CORP. ITS UNAUTHORIZED USE OR REPRODUCTION IN WHOLE OR IN PART IS STRICTLY FORBIDDEN.		

NOTES

PC130