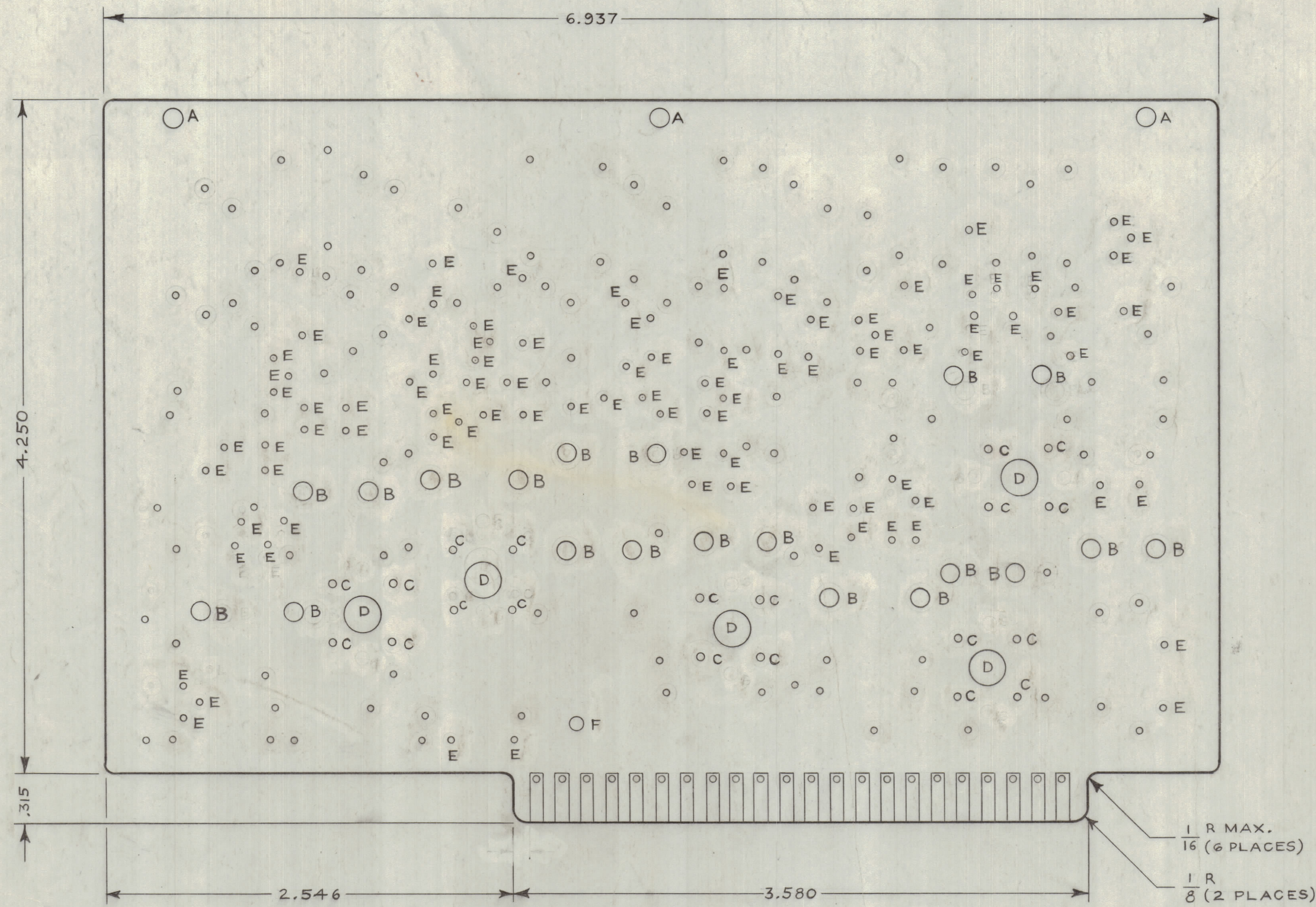


REVISIONS						
ZONE	SYM	DESCRIPTION	DATE	E.M.N. NO.	DRAFT	CHKD
	X	EXPERIMENTAL RELEASE	6-11-64	1	NP	
	X1	SIDEVIEW & BUILD UP ADDED	6-26-64	2	GDL	
	X2	1/16 R ADDED TO (4) CORNERS	7-13-64	3	Shan	@
	X3	LETTERING & CIRCUIT UP-DATED	12-1-64	4	NP	
D3	X4	(20) 8" HOLES WERE 7/64 DIA	1-	8-		
D3	X4	(10) 6" HOLES DELETED, WERE 5/64 DIA.		65		
		SEE SHEET 1 OF 2, REVISION "X4"				



HOLE LEGEND		
HOLE	DESCRIPTION	REQ'D
A	DR 1/8 DIA	3
B	DR 9/64 DIA	20
C	DR #53 (.059) DIA * 20	
D	DR 17/64 DIA	5
E	DR #60 (.040) DIA * 90	
F	DR #46 (.081) DIA	1
G	DELETED	
UN-MARKED	DR #55 (.052) DIA * 144	

\* INDICATES PLATE-THRU HOLES

**FABRICATION NOTES:**  
 TO BE MANUFACTURED IN ACCORDANCE WITH TMC SPEC. S-735 & SPECIFICALLY:

**MATERIAL:**  
 G10 EPOXY, OVERLAID WITH COPPER FOIL.  
 OVERALL THICKNESS .093 ± .0075  
 TIN LEAD PLATING OVER COPPER (PP13.2.2)

HOLES MARKED WITH \* TO BE PLATED-THRU (SEE HOLE LEGEND CHART) (PP11.4)

EDGE BOARD CONNECTORS (FINGERS) SHALL BE GOLD PLATED (PP10).

WITH THE EXCEPTION OF THE GOLD FINGERS, CONDUCTIVE PATTERN SHALL BE SOLDER COATED AS PER (PP13.3 & PP13.3.1)

HOLES SHALL BE LOCATED WITH A TOLERANCE OF ±.005 FROM DOTS IN CENTER OF LANDS OR FROM ROUND SPOTS, UNLESS OTHERWISE SPECIFIED.

TRIM BOARD ALONG INSIDE EDGE OF TRIM LINE TO WITHIN SPECIFIED LIMITS. ALL EXCESS COPPER ALONG THE EDGES SHOULD BE REMOVED AFTER TRIMMING.

KEY SLOTS TO BE DEBURRED.

**NOTES:**

1. MATERIAL G-10 EPOXY GLASS, 1/4 IN. THICK, 2.5 OUNCES COPPER CLAD, 5 THICKNESS
2. ALL HOLES TO BE PLATED-THRU WITH MINIMUM COPPER PLATING THICKNESS OF .001
3. PLATE .0004 TO .0005 NICKEL 3.25 MILLIONTHS MINIMUM ON GOLD ALL ETCHED SURFACES & PLATED-THRU HOLES.

1	1	TE 127-3	TERMINAL, STUD	SOLE	F
REQ'D	ITEM	PART NUMBER	DESCRIPTION	SYMBOL	
M. GELLMAN LIST OF MATERIAL					
MATERIAL			THE TECHNICAL MATERIEL CORP. MAMARONECK, NEW YORK		
FINISH			TITLE		
SEE NOTE			PRINTED CIRCUIT BOARD LOCAL OSCILATOR		
UNLESS OTHERWISE SPECIFIED DIMENSIONS ARE IN INCHES AND INCLUDE CHEMICALLY APPLIED OR PLATED FINISHES			DRAWN	DATE	FINAL APPROVAL
			DATE	1-20-65	
ELECT. DES.			DATE	PC110	
MECH. DES.			DATE	X4	
DECIMALS			FRACTIONS		
.X ± .05			± 1/64		
.XX ± .01			ANGLES ± 90'		
.XXX ± .005			± 0° 30'		
THE CONTENTS OF THIS DRAWING ARE THE EXCLUSIVE PROPERTY OF THE TECHNICAL MATERIEL CORP. ITS UNAUTHORIZED USE OR REPRODUCTION IN WHOLE OR IN PART IS STRICTLY FORBIDDEN.					
SHEET 2 OF 2					

NOTES