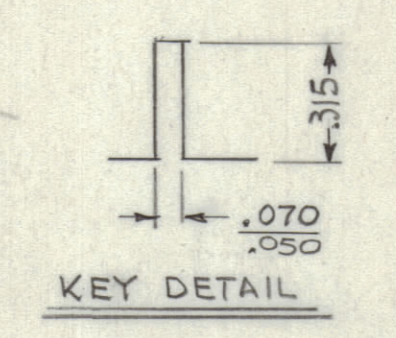
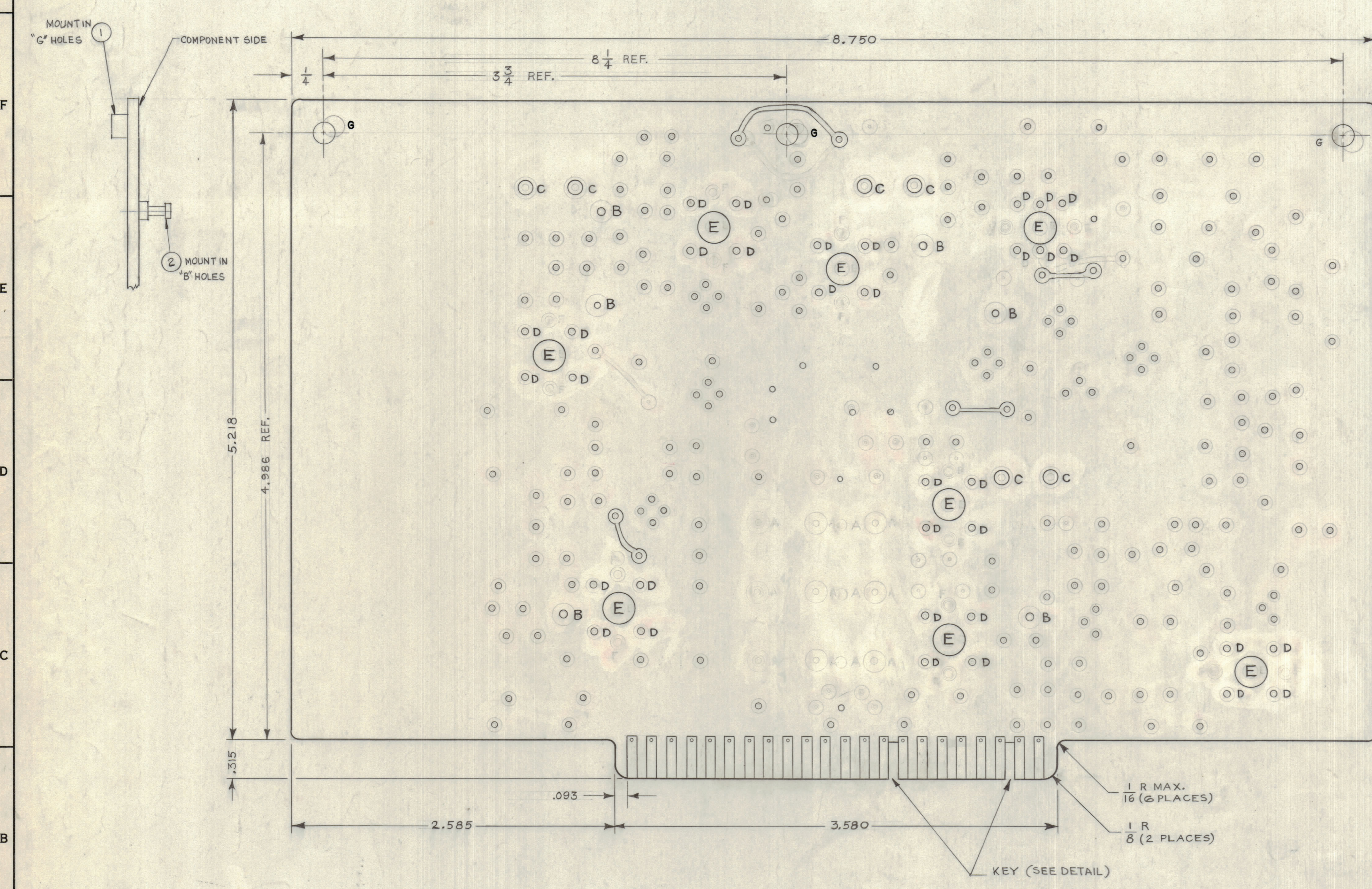


REVISIONS							
ZONE	SYM	DESCRIPTION	DATE	E.M.N. NO.	DRAFT	CHKD	APPD
X		EXPERIMENTAL RELEASE	5-19-64	1	N.F.		
X1		SIDE VIEW, KEY DETAIL & BUILDUP ADDED	6-28-64	2			
X2		SSO ADDED TO KEY DETAIL	7-13-64	3	SRG		
X3		1/16 R ADDED TO (4) CORNERS	7-13-64	4			
X4		LETTERING & CIRCUIT UP-DATED	11-6-64	5	N.P.		
X5		6" HOLES DELETED	3-8-65	6	CL		
Ø		ORIGINAL RELEASE FOR PRODUCTION	3-8-65		RU		



HOLE LEGEND		
HOLE	DESCRIPTION	REQ'D
A	DELETED DIA	6
B	DR #46 (.081) DIA	6
C	DR 7/64 DIA *	6
D	DR #53 (.059) DIA *	34
E	DR 17/64 DIA	8
F	DR DELETED	—
UN-MARKED	DR #60 (.040) DIA *	243
G	DR #11 (.191) DIA	3

\* INDICATES PLATE-THROUGH HOLES

NOTES:  
 FABRICATION NOTES:  
 TO BE MANUFACTURED IN ACCORDANCE WITH TMC SPEC. S-735 & SPECIFICALLY:  
 1. ALL HOLES TO BE "PLATED-THROUGH" UNLESS OTHERWISE SPECIFIED.  
 2. CONDUCTIVE PATTERN SHALL BE SOLDER COATED (PP13.2.1)  
 3. EDGE BOARD CONNECTORS (FINGERS) SHALL BE GOLD PLATED (PP10).

REF: A3655

QTY./UNIT	MODEL USED ON	ASSY. NO.
1	VLRB-1	A3655

REQ'D.	ITEM	PART NUMBER	DESCRIPTION	SYMBOL
6	2	TE 127-3	TERMINAL, MIDGET, SINGLE	B
3	1	TE 108-7	STAND-OFF, RIVET TYPE	G

MATERIAL		LIST OF MATERIAL	
SEE NOTE 1		THE TECHNICAL MATERIEL CORP. MAMARONECK, NEW YORK	
FINISH #		TITLE PRINTED CIRCUIT BOARD IF 5.8-6.37 MC, OSC 6.5 MC	
UNLESS OTHERWISE SPECIFIED DIMENSIONS ARE IN INCHES AND INCLUDE CHEMICALLY APPLIED OR PLATED FINISHES		DRAWN: N. Peter DATE: 5-19-64 CHECKED: DATE: 5-19-64 ELECT. DES. DATE: 5-19-64 MECH. DES. DATE: 3-8-65	
DECIMALS: .X ± .05 .XX ± .01 .XXX ± .005		DATE: 3-8-65	
FRACTIONS: 1/64 ANGLES: ± 0° 30'		PC106	
TOLERANCES: ± 0° 30'		SHEET 3 OF 3	
THE CONTENTS OF THIS DRAWING ARE THE EXCLUSIVE PROPERTY OF THE TECHNICAL MATERIEL CORP. ITS UNAUTHORIZED USE OR REPRODUCTION IN WHOLE OR IN PART IS STRICTLY FORBIDDEN.		REV. LTR.	

NOTES

PC106