

USE ONLY FOR A5322

PC-101

REVISIONS

SYM	DESCRIPTION	DATE	E.M.N. NO.	DRAFT	CHKD	APPD
O	ORIGINAL RELEASE FOR PRODUCTION	4/13/64	-H	AM.	@	
A	LABELED MECH. ASSY AS PC101-3	6-24-64	11621	A.M.	<i>glen</i>	<i>TRC</i>

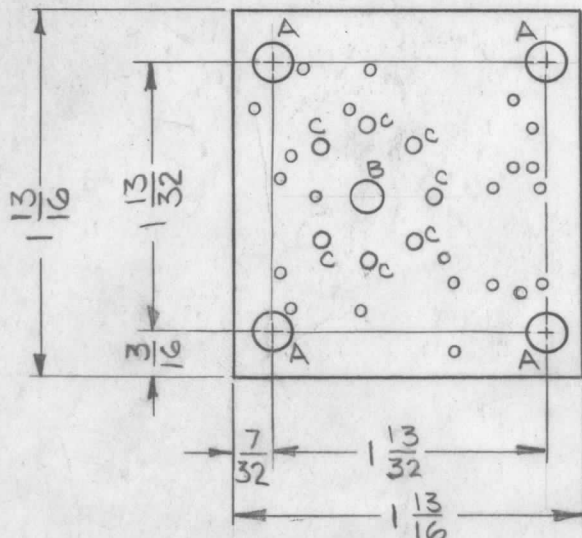
HOLE & PAD SPECIFICATIONS			
HOLE	DIA	PAD DIA	REQ
UNMARKED	.050	.130	22
A	.189	.250	4
B	.144	.250	1
C	.101	.156	6

NOTES: MANUFACTURED IN ACCORDANCE WITH TMC SPEC. S-735, UNLESS OTHERWISE SPECIFIED.

- MATERIAL: G-10 EPOXY GLASS LAMINATE 1/16 THICK, 2-OUNCE COPPER CLAD BOTH SIDES.
- ALL BOARDS WILL BE DOUBLE-SIDE. WHENEVER A PAD APPEARS ON THE PRINTED CIRCUIT SIDE, A SIMILAR SIZE AND SHAPE SHALL APPEAR ON THE COMPONENT SIDE IN EXACT REGISTER. (EXCEPT WHEN AN EXCEPTION IS NOTED)
- (A) ALL HOLES EXCEPT "A" MTG. HOLES ARE TO BE PLATED-THRU WITH MINIMUM COPPER PLATING THICKNESS OF .0015.
(B) PLATE .0003 TO .0005 NICKEL & 25 MILLIONTHS MINIMUM OF GOLD ALL ETCHED SURFACES AND PLATED-THRU HOLES.
- CONDUCTOR WIDTH; .046 MIN, .062 MAX. EXCEPT WHERE PROHIBITED BY SPACE BETWEEN CONDUCTORS. SPACE BETWEEN CONDUCTORS .031 MIN.

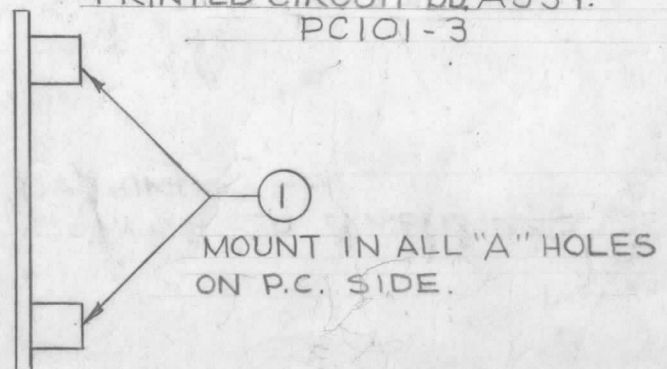
ORIGINAL ARTWORK TO BE REMOVED FROM PROTECTIVE POCKETS WHEN PHOTOGRAPHING. (PC-101-1)

DO NOT SCALE DWG



MACHINING (PC-101-2)

PRINTED CIRCUIT BOARD ASSY. PC101-3



(ORIGINAL ARTWORK TO BE SUPPLIED BY TMC FOR PHOTOGRAPHING (SCALE 1:1))

REQ'D.	ITEM	PART NUMBER	DESCRIPTION	SYMBOL
4	1	TE-108-1	STANDOFF, RIVET TYPE	

AALTONEN		LIST OF MATERIAL	
MATERIAL SEE NOTES		THE TECHNICAL MATERIEL CORP. MAMARONECK, NEW YORK	
FINISH SEE NOTES		TITLE PRINTED CIRCUIT BOARD ASS'Y. (Y6007 TUBE SOCKET)	
UNLESS OTHERWISE SPECIFIED DIMENSIONS ARE IN INCHES AND INCLUDE CHEMICALLY APPLIED OR PLATED FINISHES		DRAWN <i>G. Green</i> DATE 10-17-63 CHECKED <i>A. Turci</i> DATE 2-25-64 ELECT. DES. <i>TRC</i> DATE 2-25-64 MECH. DES. <i>glen</i> DATE 2-25-64	FINAL APPROVAL <i>RDC</i> DATE 4/22/64 PC-101 SHEET
DECIMALS .X ± .05 .XX ± .01 .XXX ± .005	TOLERANCES ± 1/64 ANGLES ± 0° 30'	REV. LTR. A	

2	MCG-1	A-3322 A-3323
Q'TY./UNIT	MODEL USED ON	ASS'Y. NO.
SCALE 1:1	CODE A	

THE CONTENTS OF THIS DRAWING ARE THE EXCLUSIVE PROPERTY OF THE TECHNICAL MATERIEL CORP. ITS UNAUTHORIZED USE OR REPRODUCTION IN WHOLE OR IN PART IS STRICTLY FORBIDDEN.

NOTES