

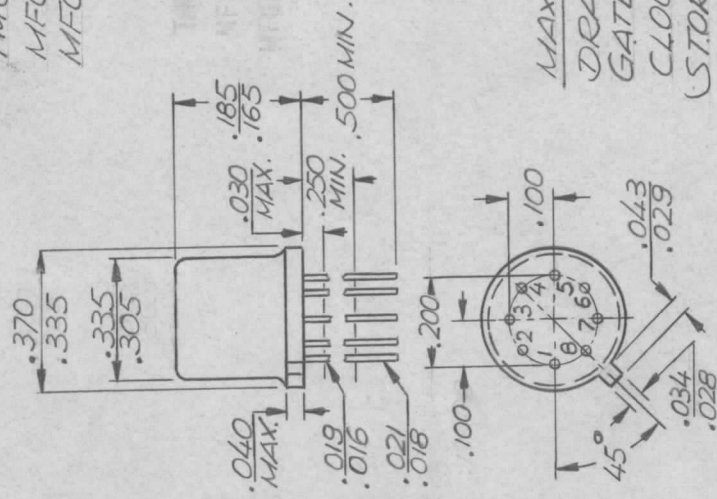
APPLICATION

QTY	MODEL USED ON	ASSY NO.	LTR
	RTMU-4		X

REVISIONS

DESCRIPTION	DATE	E.M.N.NO	DRAFT	CHKD	APPD
EXPERIMENTAL RELEASE	8/15/68		C.V.	<i>[Signature]</i>	<i>[Signature]</i>
ORIG. RELEASE FOR PROD.		Ø	R.G.		<i>[Signature]</i>
PICT. & TERM CHART ADD.	9/22/69	19588	K.L.N.D.		50 2nd

TMC PART NUMBER: NW 175
 MFR PART NUMBER: MEM 31032
 MFR (TMC CODE NO.): S 401 - 333



TERMINALS	
P/N	FUNCTION
1	OUTPUT
2	V0
3	VDD
4	VGG
5	GROUNDED
6	INPLT
7	CLOCK(Ø)
8	GROUNDED

MAXIMUM RATINGS
 DRAIN VOLTAGE (-VDD) = -30 VOLTS TO +0.3 VOLT
 GATE VOLTAGE (-VGG) = -30 VOLTS TO +0.3 VOLT
 CLOCK & DATA INPUT VOLT. = -30 VOLTS TO +0.3 VOLT
 STORAGE TEMPERATURE = -55°C TO +150°C
 OPERATING TEMPER. RANGE = -55°C TO +85°C

PURCHASING NOTE: VENDOR MUST INCLUDE THE FOLLOWING INFORMATION WHEN SHIPPING THIS ITEM TO TMC.

1. AN OUTLINE DRAWING OR ILLUSTRATION FROM CATALOG SHOWING ALL PERTINENT DIMENSIONS AND TOLERANCES.
2. ELECTRICAL AND/OR MECHANICAL SPECIFICATIONS AS SHOWN IN THEIR CATALOGS.

REQ'D ITEM	PART NUMBER	DESCRIPTION	SYM.
LIST OF MATERIAL			
THE TECHNICAL MATERIEL CORP. MAMARONECK, NEW YORK			
SHIFT, REGISTER 32 BIT			
UNLESS OTHERWISE SPECIFIED DIMENSIONS ARE IN INCHES AND INCLUDE CHEMICALLY APPLIED OR PLATED FINISHES DECIMALS: .X ± .05 TOLS. 1/64 ANGLES .XX ± .01 0°-30' .XXX ± .005			
MATERIAL			
FINISH			
FINAL APPROVAL MECH. DES. ELECT. DES. CHECKED DRAWN	DEMARCO DATE 8/15/68 DATE 8/15/68 DATE 8/15/68 DATE 8/15/68 DATE 8/15/68		
NOTICE TO PERSONS RECEIVING THIS DRAWING THE TECHNICAL MATERIEL CORPORATION claims proprietary right in the material disclosed hereon. This drawing is issued in confidence for engineering information only and may not be reproduced or used to manufacture anything shown hereon without permission from THE TECHNICAL MATERIEL CORPORATION to the user. This drawing is loaned for mutual assistance and is subject to recall at any time.		SIZE A	CODE IDENT. NO. 82679
		DWG NO. NW 175	ISSUE A
SCALE		SHEET	OF