

REVISIONS

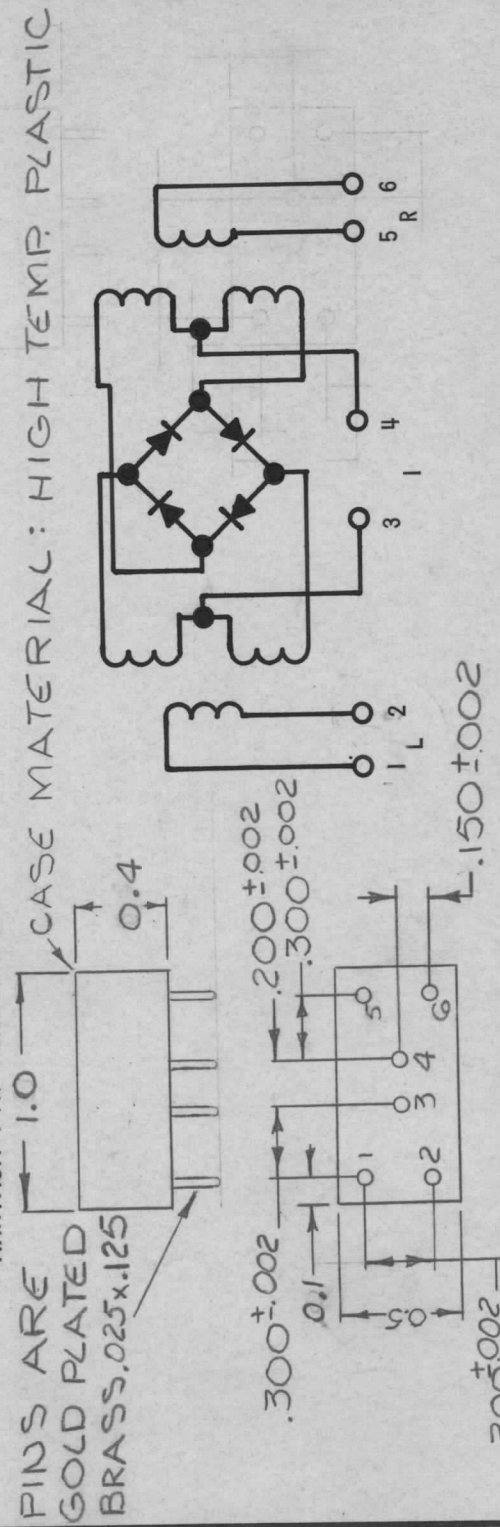
APPLICATION

QTY	MODEL USED ON	ASSY NO.	LTR	DESCRIPTION	DATE	E.M.N.NO	DRAFT	CHKD	APPD
	MMX(-)-2		X	EXPERIMENTAL RELEASE	3/4/68		C.V.		
			Ø	ORIG. RELEASE FOR PROD.	3-11-68	Ø	R.G.		

MFGR(TMC CODE NO.): S401-468
 MFGR CATALOG NUMBER: MODEL M6

ABSOLUTE MAXIMUM RATINGS

(LIMITING VALUES, BEYOND WHICH THE MIXER MAY BE DAMAGED)
 OPERATING AND STORAGE TEMPERATURE: -65°C TO +100°C
 MAXIMUM PEAK INPUT POWER: 50 MILLIWATTS
 MAXIMUM PEAK CURRENT, ANY PORT: 50 MILLIAMPS
 MAXIMUM PIN TEMPERATURE: 500°F



PURCHASING NOTE: VENDOR MUST INCLUDE THE FOLLOWING INFORMATION WHEN SHIPPING THIS ITEM TO TMC.

1. AN OUTLINE DRAWING OR ILLUSTRATION FROM CATALOG SHOWING ALL PERTINENT DIMENSIONS AND TOLERANCES.
2. ELECTRICAL AND/OR MECHANICAL SPECIFICATIONS AS SHOWN IN THEIR CATALOG.

UNLESS OTHERWISE SPECIFIED DIMENSIONS ARE IN INCHES AND INCLUDE CHEMICALLY APPLIED OR PLATED FINISHES	REQ'D ITEM	PART NUMBER	DESCRIPTION	SYM.
DECIMALS .X ± .05 .XX ± .01 .XXX ± .005				
FRACTIONS 1/64				
TOLS. ANGLES 0°-30°				
MATERIAL	LIST OF MATERIAL			
FINISH	THE TECHNICAL MATERIEL CORP. MAMARONECK, NEW YORK			
	NETWORK, MIXER, DOUBLE BALANCED			
	SIZE	CODE IDENT. NO.	DWG NO.	ISSUE
	A	82679	NW 163	Ø
	SCALE: NONE		SHEET	OF

NOTICE TO PERSONS RECEIVING THIS DRAWING
 THE TECHNICAL MATERIEL CORPORATION claims proprietary right in the material disclosed hereon. This drawing is issued in confidence for engineering information only and may not be reproduced or used to manufacture anything shown hereon without permission from THE TECHNICAL MATERIEL CORPORATION to the user. This drawing is loaned for mutual assistance and is subject to recall at any time.