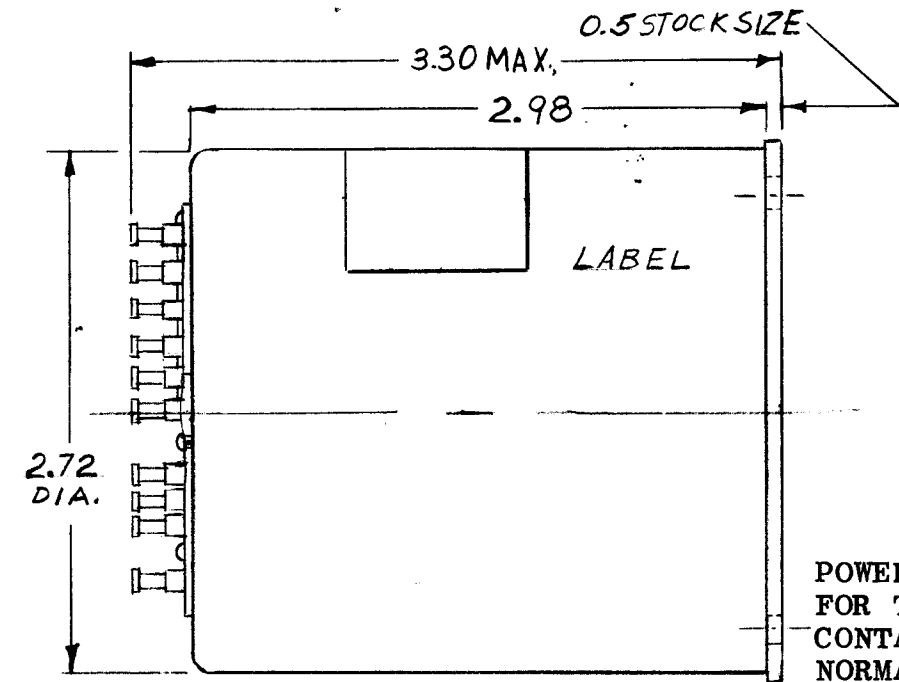
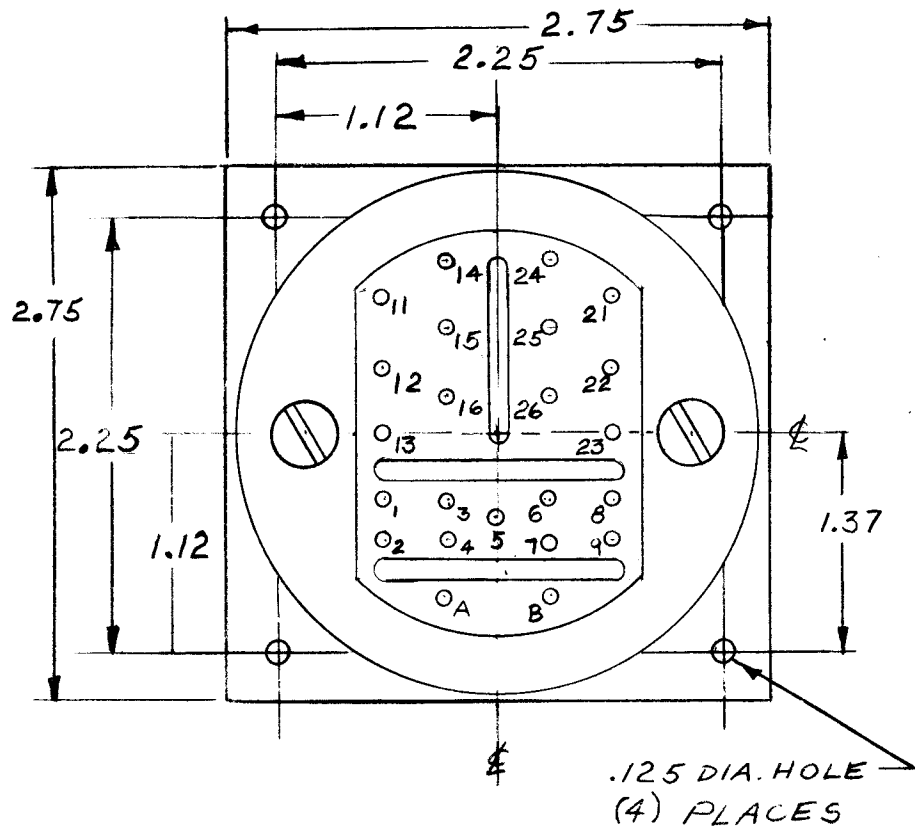


NW132

REVISIONS					
SYM	DESCRIPTION	DATE	E.M.N. NO.	DRAFT	CHKD APPD
Ø	ORIGINAL RELEASE FOR PRODUCTION	8/31/65	Ø	✓	



POWER MUST BE ON FOR THIS SET OF CONTACTS TO BE NORMALLY OPERATED.

- 26 LOW LIMIT LOAD RELAY OUTPUT CONTACTS
- 25 10 A, 115 F.A.C. RESISTIVE LOAD.
- 24 METER POINTER BELOW (LEFT) OF CONTACT SET POINT.
- 23 22-23 AND 25-26 SHORTED
- 22 METER POINTER ABOVE (RIGHT) OF CONTACT SET POINT.
- 21 22-21 AND 25-24 SHORTED
- 16 HIGH LIMIT LOAD RELAY OUTPUT CONTACTS 10A, 115 V.A.C.
- 15 RESISTIVE LOAD.
- 14 METER POINTER BELOW (LEFT) OF CONTACT SET POINT
- 13 12-11 AND 15-14 SHORTED
- 12 METER POINTER ABOVE (RIGHT) OF CONTACT SET POINT
- 11 12-13 AND 15-16 SHORTED
- 9 FROM EXT. POWER Z (MINUS)*
- 8 FROM EXT. POWER X (PLUS)*
- 7 AUTOMATIC/MANUAL RESET FOR LOW LIMIT SET POINT
- 6 WITH 6-7 SHORTED UNIT OPERATES IN AUTOMATIC RESET CONDITION.
- 5 FROM METER #1 *
- 4 NOT USED
- 3 NOT USED
- 2 AUTOMATIC/MANUAL RESET FOR HIGH LIMIT SET POINT.
- 1 1-2 SHORTED UNIT OPERATED IN AUTOMATIC RESET CONDITION.
- B FROM METER #4 *
- A FROM METER #3 *

*NW132
MR187

REQ'D.	ITEM	PART NUMBER	DESCRIPTION	SYMBOL
LIST OF MATERIAL				
MATERIAL			THE TECHNICAL MATERIEL CORP. MAMARONECK, NEW YORK	
FINISH			TITLE NETWORK, RELAY, METER	
UNLESS OTHERWISE SPECIFIED DIMENSIONS ARE IN INCHES AND INCLUDE CHEMICALLY APPLIED OR PLATED FINISHES			DRAWN D. VENEZIAN DATE 8-27-65	FINAL APPROVAL <i>[Signature]</i> DATE 8/31/65
DECIMALS .X ± .05 .XX ± .01 .XXX ± .005			TOLERANCES ± 1/64 ANGLES ± 0° 30'	MECH. DES. DATE 8-31-65
THE CONTENTS OF THIS DRAWING ARE THE EXCLUSIVE PROPERTY OF THE TECHNICAL MATERIEL CORP. ITS UNAUTHORIZED USE OR REPRODUCTION IN WHOLE OR IN PART IS STRICTLY FORBIDDEN.			ELECT. DES. DATE	SHEET REV. LTR.

1	TSTE 2.5K	
1	TSTE 10K	
Q'TY./UNIT	MODEL USED ON	ASS'Y. NO.
SCALE 1:1	CODE	5401-44 (60030-3)

NOTES