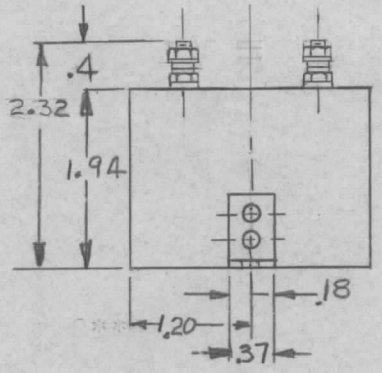
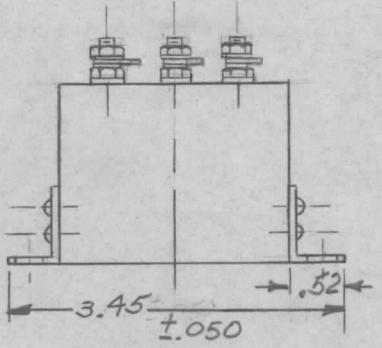
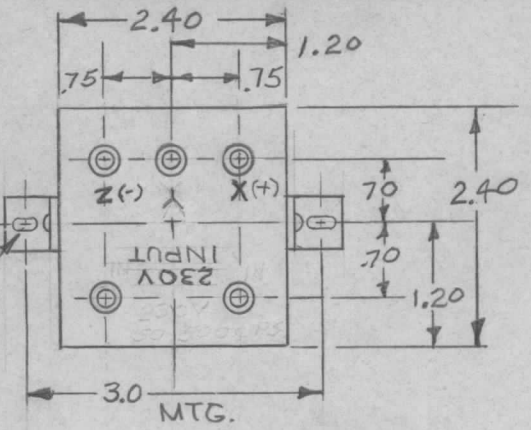


REQ. PER UNIT	USED ON		
	MODEL	ASS'Y. NO.	DATE
1	TSTE 10K		8/27/65
1	TSTE 2.5K		

NW131

A

MOUNTING SLOT .15X.22
(2 REQ)



- X. D.C. OUTPUT PLUS (TO RELAY HEADER TERMINAL #8) *
- Y. LAMP VOLTAGE OUTPUT (TO METER HEADER TERMINAL #2) *
- Z. D.C. OUTPUT MINUS (TO RELAY HEADER TERMINAL #9) *

* NW132
MR187

REQ.	ITEM	PART NO.	DESCRIPTION				SYMBOL
A			CHGD 4.32 TO 2.32. CHG'D TERM. STYLE. ADD DIM. .4. DELE 50-500 CPS & "IN. REVERSE "Y" & 230V INPUT. MFG P/N WAS 600203				
			ORIGINAL RELEASE FOR PRODUCTION				
UNLESS OTHERWISE SPECIFIED DIMENSIONS ARE IN INCHES AND INCLUDE CHEMICALLY APPLIED OR PLATED FINISHES		SCALE	2:1				
DECIMALS	TOLERANCES		FRACTIONS	CODE			
.X ± .05			± 1/64	5401-44(60250-3)			
.XX ± .01			ANGLES				
.XXX ± .005			± 0° 30'				
THE TECHNICAL MATERIEL CORP. MAMARONECK. NEW YORK		NETWORK, POWER, SUPPLY, RELAY, METER		DRAWN			
MATERIAL		TYPE & TEMPER		HEAT TREAT. SPEC.			
DRAWN		CHECKED		FINAL APPROVAL			
P. VENEZIAN 8/27/65		aa 8/31/65		NW131		A	
FINISH & SPEC. NO.		ELEC. DES. APP.		MECH. DES. APP.			