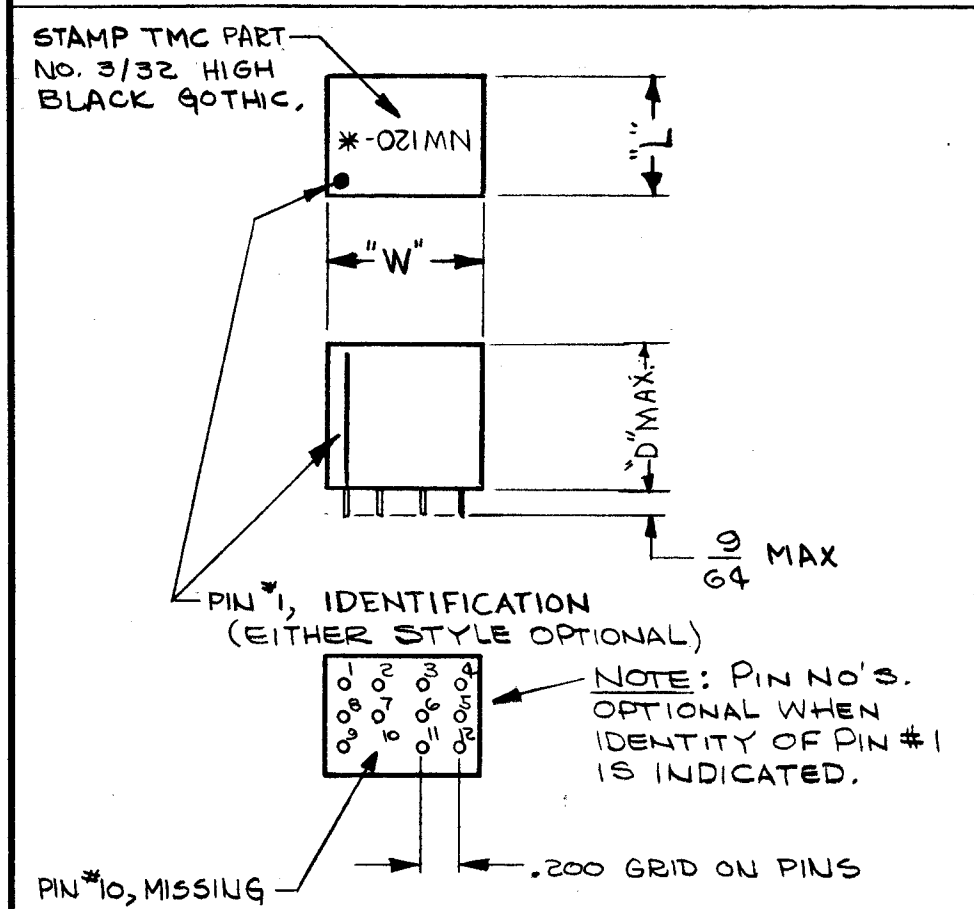


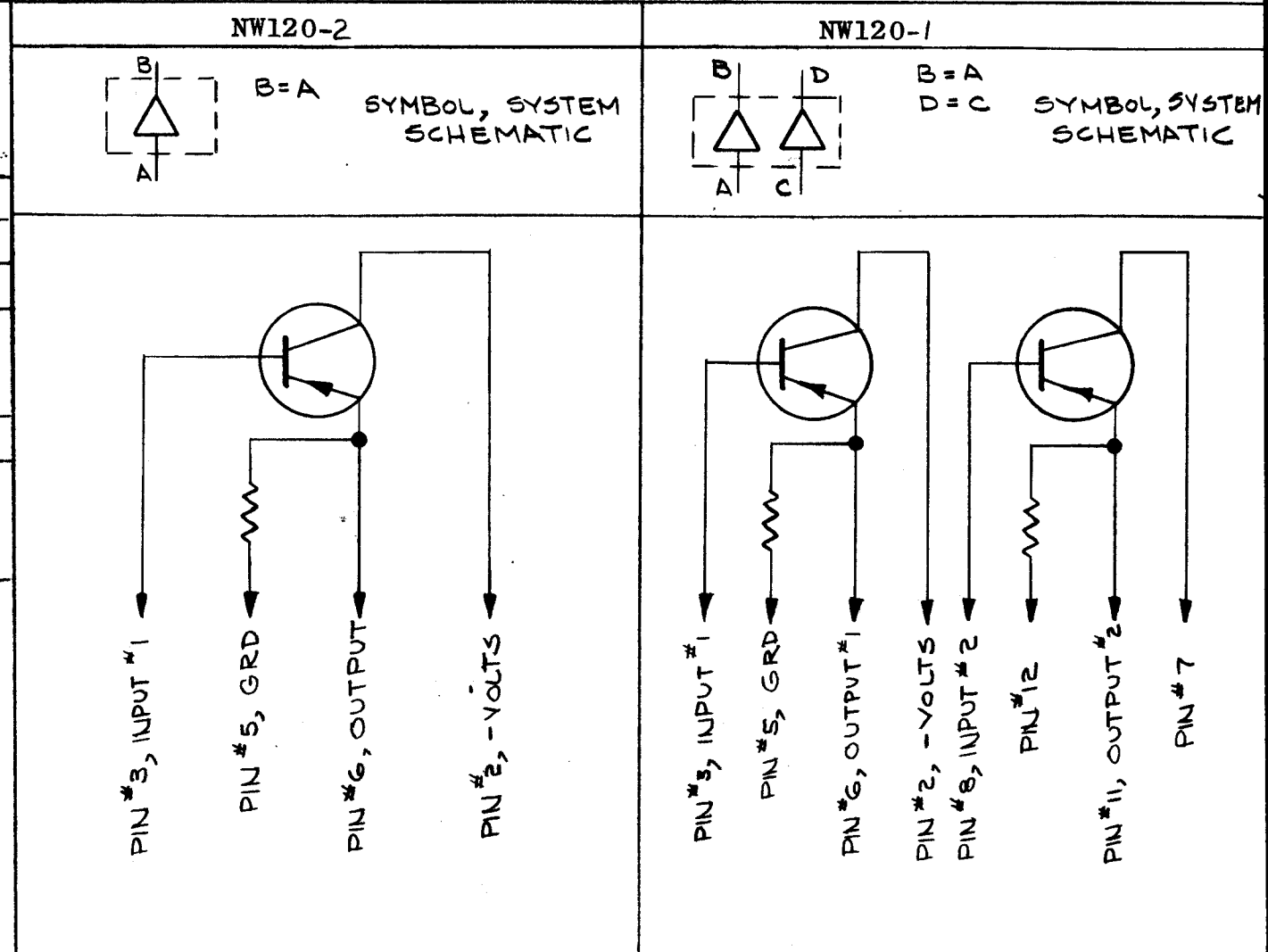
TMC PART NUMBER	MFG. PART NUMBER	MFG. TYPE NUMBER	SWITCHING CHAR.	SIZES			OPERATING TEMPERATURE
				"W"	"F"	"D"	
NW120-1	730A0047	EF12-1	A or B	.800	.630	.770	-35°C TO +65°C
NW120-2	730B0048	EF11-1	A or B	.800	.630	.770	-35°C TO +65°C
NW120-11	730A0047	EF11-1-A	A OR B	.800	.630	.770	-35°C TO +85°C
NW120-12	730B0048	EF12-1-A	A OR B	.800	.630	.770	-35°C TO +85°C
NW120-21	730A0047	EF11-1-B	A OR B	.800	.630	.460	-35°C TO +85°C
NW120-22	730B0048	EF12-1-B	A OR B	.800	.630	.460	-35°C TO +85°C

NW120 DIM

REVISIONS						
SYM	DESCRIPTION	DATE	E.M.N. NO.	DRAFT	CHKD	APPD
X	EXPER. RELEASE	12-16-64	X			
X1	CLARIFICATION ON DWG	1-4-65	X1			
Ø	ORIGINAL RELEASE FOR PRODUCTION	1-4-65	Ø	Ø L		
A	NW120-2 WAS NW120-1, NW120-1 WAS NW120-2 EF12-1 WAS EF11-1, EF11-1 WAS EF12-1	6-24-65	14329	D.V.V.		
B	NOTE 3 DELETED. OPER. TEMP. COL. NW120-11, 12, 21, 22, ADDED	6-28-65	14367	D.V.V.		
C	PICTORIAL REVISED, NOTE 3 ADDED	5-3-66	16184	H.C.A.		
D	DIM. .460 WAS .375 Ø MAX. ADDED TO "D" DIM	9/11/67	18484	H.G.		



SWITCHING CHARACTERISTICS	
A-6VOLTS LOGIC	B-12VOLTS LOGIC
INPUT	INPUT
-4.0V MIN.	-6.5V MIN.
OUTPUT	OUTPUT
-3.5V MIN.	-6.0V MIN.



NOTE:
1- NW120-2 IS A DOUBLE OF NW120-1.
2- USABLE ON NEGATIVE OR POSITIVE LOGIC.
3- POLARIZING PIN IS PIN # 10

NOTES

Q'TY./UNIT	MODEL USED ON	ASS'Y. NO.
SCALE 1:1	CODE C	5401-167
THE CONTENTS OF THIS DRAWING ARE THE EXCLUSIVE PROPERTY OF THE TECHNICAL MATERIEL CORP. ITS UNAUTHORIZED USE OR REPRODUCTION IN WHOLE OR IN PART IS STRICTLY FORBIDDEN.		

REQ'D.	ITEM	PART NUMBER	DESCRIPTION	SYMBOL
EATON LIST OF MATERIAL				
MATERIAL		THE TECHNICAL MATERIEL CORP. MAMARONECK, NEW YORK		
FINISH		TITLE NETWORK, DIGITAL EMITTER FOLLOWER		
UNLESS OTHERWISE SPECIFIED DIMENSIONS ARE IN INCHES AND INCLUDE CHEMICALLY APPLIED OR PLATED FINISHES		DRAWN P. Jensen	DATE 12-16-64	FINAL APPROVAL R.R.
		CHECKED @	DATE 1-13-65	
		ELECT. DES.	DATE	
		MECH. DES.	DATE 1-13-65	
		DECIMALS .X ± .05 .XX ± .01 .XXX ± .005	FRACTIONS ± 1/64 ANGLES ± 0° 30'	TOLERANCES
		NW120		D
		SHEET		REV. LTR.